



Tonga Household Listing 2021

CENSUS PRE-COUNTS



© 2021 Tonga Statistics Department

All rights for commercial/ for profit reproduction or translation, in any form, reserved. Tonga Statistics Department (TSD) authorises the partial reproduction or translation of this material for scientific, educational or research purposes, provided that TSD and the source document are properly acknowledged.

This report was prepared by the staff of Tonga Statistics Department.

More information

For more information about the Tonga Household Listing 2021, or request additional statistical information, please contact TSD.

Tonga Statistics Department

PO Box 149

Nuku'alofa

Tonga

Telephone: + (676) 23300

Facsimile: + (676) 24303

Email: dept@stats.gov.to

Website: <https://tongastats.gov.to/>

Suggested citation:

Tonga Statistics Department, 2021. *Tonga Household Listing 2021, Census Pre-counts*, Nuku'alofa, Tonga: Tonga Statistics Department.

Foreword

This is the Tonga Household Listing 2021 Census Pre-counts where by the finding here are preliminary estimates to aid the upcoming national census held in November 2021. Information regarding total number of households, population estimates, and average household size are included in this report.

It is intended to provide guidance information for planning of field operation and enumeration of the census as well as other national surveys that follow, and it support of the objective of “Leaving No One Behind” of the 2030 Agenda for Sustainable Development Goals (SDGs) to ensure that every household and person is accounted for during this time.

Tonga Statistics Department is confident that the findings produced through the Household Listing 2021 will support evidence decision-making and sustainable planning.

The department would also like to acknowledge the technical assistance of SPC (The Pacific Community) and the untiring work done by staff and enumerators for Tonga Household Listing 2021.

Dr. Viliami Konifelenisi Fifita



Government Statistician

Contents

Foreword	1
Glossary.....	3
1. Introduction	5
2. Field Staff and Operations	6
2.1 Field Staff and Responsibilities	6
2.2 Training and Pilot Test	7
2.3 Field Operations.....	8
2.3.1 CU Selection and Assignment.....	8
2.3.2 Data Collection Equipment	8
2.3.3 Collection procedure	10
2.4 Data editing and cleaning	11
3. Results.....	11
3.1 Census Units (CU) coverage.....	11
3.2 Total household summary (without estimates)	12
3.3 Overall household counts (including estimates)	13
3.4 Household size.....	18
4. Appendices.....	24
Appendix 1: List of excluded CU	24
Appendix 2: Listing Template	25
Appendix 3: List of personnel involved in the Tonga Household Listing 2021	26

Glossary

Census Unit (CU): the smallest geographical statistical area in the Tonga Statistical Geography Framework consisting of an average of 30 households. Here we consider the CU as EA.

Dwelling: a room or groups of rooms intended as a place of residence for one household. For example, single house, an apartment or groups of rooms in a house. Note that one dwelling unit can be shared by more than one household.

Enumeration Area (EA): the smallest geographical statistical unit designed for data collection with mutually exclusive well-defined boundaries.

GPS coordinates: is a point that specifies the location of a feature of the earth. It is a combination of latitude and longitude.

Head of household: a member of the household who usually reside with the rest of the household members in the same dwelling, and is acknowledged by the other members as head.

Household: refers to a person or group of persons (related or unrelated) who live together in the same dwelling, share common living arrangements, acknowledge same head or household and eat together.

Institution: is a place of residence apart from private household, occupied by a collective of people such as hotels, motels, guest house, hospital and prison. It does not have a head of household.

Listing template: refers to the hard copy form that states all required information to be collected from the field.

Occupied (not at home): is when the dwelling is for certain occupied, however after at least 3 visits no one was home.

Occupied: is when a physical dwelling is a usual residence for a household.

Private household: refers to a single household that has a head and the members live and eat meals together.

Temporarily vacant: refers to when the dwelling has not been occupied for quite some time (3 - 11 months) but was or intended as a place of residence for a household.

Vacant: refers to when the dwelling is in suitable condition for living but has not been occupied by anyone for a year or more.

1. Introduction

The household listing accounts for all households in Tonga in a certain period of time. As part of the pre-census activities, its intent to provides an estimation for effective planning of the actual census enumeration period. It is amongst the most crucial activities which the results may provide an estimation depending on the collection method.

The 2021 listing was unique as it was task that trial run the revised statistical boundaries the output of the Re-boundary activity also in preparation for this year's census. If successfully done, the listing would provide the pre-count of the number of households with its corresponding precise location at different geographical levels.

Due to the revision of the statistical boundaries for data collection and cost-efficient purposes, the listing was conducted to areas with much change to statistical boundaries excluding small islands due too little to no alteration done to statistical boundaries. Thus, an estimation of the population from 2016 will be used for these areas.

This report explains the findings from the Tonga Household Listing 2021. It explains the procedures and scope of the data collection. In addition, it provides a summary of the household counts, status, total number of head of household, and estimation of the population.

The aim is to up-date the population household list to aid planning for data collection for the 2021 Census held in November and later national surveys.

Objectives

- To confirm the EA boundaries according to the revised framework in preparation for the 2021 Census.
- To provide an estimate pre-count of the population prior 2021 Census.
- Update the head of household list according to the revised EA.

2. Field Staff and Operations

2.1 Field Staff and Responsibilities

Planning of the entire operation fell upon the management team (Appendix 3). This included detailed planning and budgeting, recruitment of staff and managing of the data collection phase while in action.

A total of 52 field staff were dedicated to conduct the data collection were a proportionate number of listers were designated to each island groups. 12 teams were assigned for Tongatapu consisting of 5 supervisors and 24 enumerators, 3 teams comprising of 1 supervisor and 8 enumerators for Vava'u, 2 teams for Ha'apai with 1 supervisor and 4 enumerators with the same ration for 'Eua. There were 1 team for Niuatoputapu and Niuafu'ou each.

Each team consist of 2 listers - one assigned to operate the GPS device and the other to record the data on paper. Supervisors in Tongatapu were responsible for 2-3 teams each while one supervisor was assigned to monitor each of the island groups.

Appendix 3 provides a list of enumerators and supervisors involved in the data collection process.

Supervisors were assigned the following responsibilities:

- Overall monitor of the team during the fieldwork period to ensure that enumerators work according to plan.
- Assignment census units to each enumerator in the team.
- Ensure that each enumerator receives the required equipment and documents for data collection and the safekeeping of the materials. Ensure that all provided material is returned in satisfactory condition to TSD.
- Support enumerator to make the first contact with the household.
- Consistent day-to-day communication with the team to ensure the target workload is completed on time.
- Prompt reporting of arising concerns or issues in the field such as household refusal to TSD.
- Review submitted template before handing to TSD.
- At times act or take on responsibilities of an enumerator during fieldwork when necessary.
- Responsible to conduct random validity check visits to household that has already been listed by the enumerators.

- Responsible for compiling dataset in electronic format submitted by the enumerators.

Enumerators were assigned the following responsibilities:

- Collect high-quality data strictly according to what's stated in the template through high-quality interviews.
- Support Supervisor to make the first contact with selected households.
- Keep up with workload (average 1 block per day) and implement according to schedule.
- Build trust and rapport with households to ensure full cooperation.
- Look after field equipment and return to Supervisor at the end of the round/project.
- Follow the instruction of the supervisor.
- Immediately raise any concerns or issues with fieldwork to their supervisor for prompt action.
- Responsible for entering all completed templates by his/her team into an electronic provided template.

2.2 Training and Pilot Test

A five days training was conducted focused on teaching the procedures of conducting the fieldwork, and helping the field staff understand the concepts and purpose of the listing. The training began on the 12th - 18th of April 2021 with each day assigned a set of activities which included tasks to demonstrate the understanding of each participant during each session.

The facilitators/ main trainers were staff from the census and survey division of TSD who were heavily involved in planning the household listing (Appendix 3).

The last two days of training were dedicated to testing the set procedures for conducting the listing including using devices to collect GPS. Each enumerator was expected to complete 1 Enumeration Area (EA) per day. Thus, each team was assigned selected EA's from Kolofo'ou, Kolomotu'a, Ma'ufanga, Puke, Nukunuku, Houma, Vaini, Ha'ateiho, Tatakamotonga, and Lapaha village to conduct the pilot test upon. EAs were selected to provide geographical representation from each district in Tonga.

2.3 Field Operations

2.3.1 CU Selection and Assignment

The unit of data collection or EA was the Census Unit (CU). A CU has an average of 30 households a new disaggregation under the Tonga Statistical Geographical Framework (TSGF) currently being revised. Mentioned before the listing covered majority of the islands however, not all.

The selection of the CUs to be listed was based of comparability of the TSGF with the old census boundary framework used in the 2016 census. Thus, those CU and that had similar boundaries to 2016 Census Blocks (CB) were excluded from the listing to await estimation using the 2016 census. Hence majority of small outer islands were excluded. Refer to appendix 1 for list of excluded CUs. This was done due for cost efficiency purposes.

Similar rate of completion to the pilot test 1 CU per day was assigned to each enumerator. Thus, each team was expected to complete at least 2 CU per day. Like the aim of most data collection, this arrangement was done to avoid the double counting and promote effective field management. However, conducting the listing per CU was recommended to be done in teams, thus, 2 enumerators conducted the listing for 2 CU consecutively per day.

2.3.2 Data Collection Equipment

Each team was provided set of equipment to conduct the data collection in the field which included a supervisor & CU map, paper template, handheld GPS device, batteries for the GPS, folder, clipboard, pens, and identification card for each lister to wear at all times during fieldwork hours. Supervisor maps were provided with an overview of all CUs in each village (Figure 2.2). The CU maps displayed the extend of individual CUs (Figure 2.1) and are provided to each enumerator according to CU scheduled for each working day.

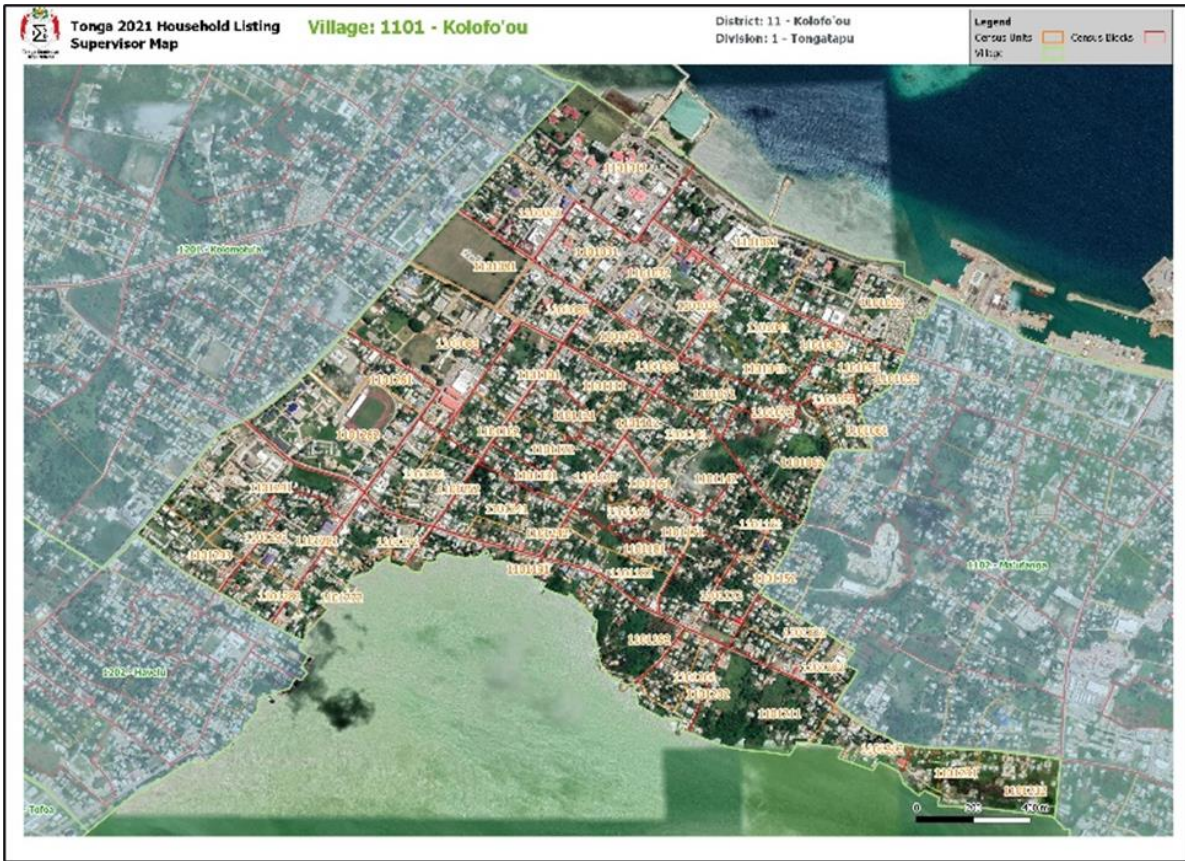


Figure 2.2: Sample of supervisor map.

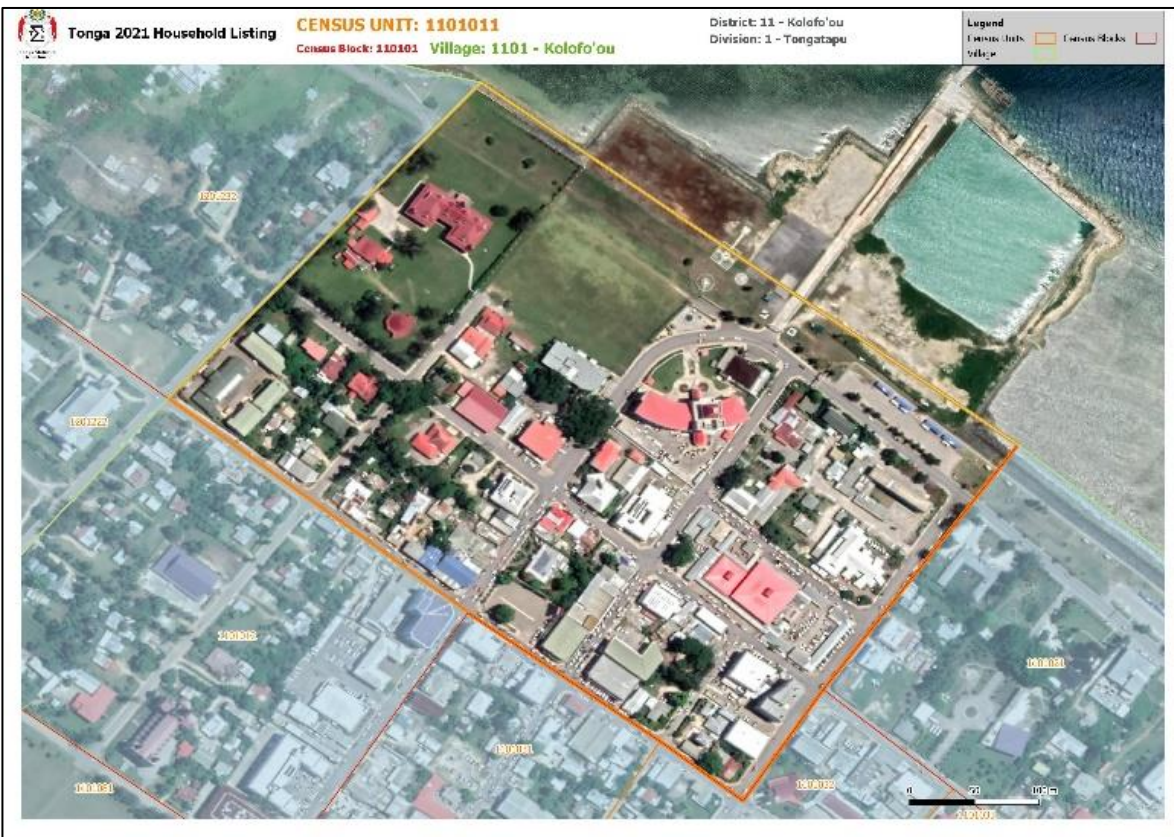


Figure 2.1: Sample of CU map.

2.3.3 Collection procedure

Data collection began on the 19th April - 11th June 2021 subsequent to the training and pilot test. Clear steps were outlined for all enumerators to follow during the data collection period shown in Figure 2.3.



Figure 2.3: Household listing data collection procedure

Step 1: Locating and establishing the EA boundary

Each enumerator was assigned a CU where the supervisor was responsible for providing the corresponding map. The first step was to physically locate the boundaries of the CU using the map as a guide. The enumerator established the limits of CU after a tour of the grounds. Distinct physical features on the ground and map aided in the boundary confirmation. During this step the team should plan the collection route throughout the CU.

Step 2: Complete the Listing Template

The listing template is a paper document that contains all the required information to be collected from the households. Refer to Appendix 2 for the layout. A separate new template was provided for each CU. All collected data was recorded in this paper document and stored in the folder for later entry. Refer to the Tonga Household Listing 2021 Fieldwork Manual for the details of how the template was completed.

Step 3: Recording the GPS coordinates using the GPS device

The GPS device records the precise location of a household. Each team was provided with a Garmin eTrex32x to record the GPS coordinates required in the template. Further details of the device can be found here https://www8.garmin.com/manuals/webhelp/eTrex22x-32x/EN-US/eTrex_22x_32x_OM_EN-US.pdf.

The location in the forms of latitude and longitude captured using the GPS device was recorded on to the template to associate the geographical location with the rest of the data collected.

Step 4: Plot the HH No. on the EA map

Once all records for the household is completed on the listing template, identify the dwelling location of the household on the CU map then use the assigned household number from the

template to plot on this location of the map. When the listing of the CU was completed, the map showed consecutively how the households were listed. In cases where the CU map extend was too large in which the physical dwelling was too small to see, a close-up map was provided.

Step 5: List and Map Review

Once all households and institution have been listed in the EA, the completed template and plotted map was doublechecked to ensure both documents correspond correctly and that no household is left out or double counted. Supervisors were responsible for this checking phase and errors/uncertainties that were identified here were immediately returned to responsible enumerator for correction or clarification.

Step 6: Data Entry

Each team was responsible for entering data collected on the template into electronic format. An excel format of the template as provided for the data entry with embed validation checks to help avoid errors. Data entry was done daily once all CU that was assigned the day has been completed. Supervisors were also responsible for conducting the final checking of both electronic and hardcopy version of data.

2.4 Data editing and cleaning

Editing and cleaning was done simultaneously during and continued post the enumeration period. Supervisors were responsible for error checking each teams collected data continuously where errors that were identified were corrected on the immediately. Generally, location data was monitor and checked using QGIS. Google maps aided with the location of the dwellings and checking of the GPS coordinates by both enumerators and supervisors. Later general editing was conducted post data collection where all data were cross-tabulated and cleaned for consistency purposes and to ensure that data is ready for analysis and dissemination.

3. Results

3.1 Census Units (CU) coverage

CUs are the building blocks that aggregate to form the geographical aggregations of village, district and island division. The 2021 household listing was the first ever data collection exercise to utilize the CU as enumeration area unit. There is a tentative total of 758 CU from the TSGF (subject

to change) where 93% were enumerated in the 2021 household listing and the remaining were excluded for cost efficiency purposes. There is an average CU size of about 30 households per CU.

3.2 Total household summary (without estimates)

There is a total of 21,230 households were 20,990 are private households and 240 are institutions shown in Table 3.1. The status of each private household was classified into four categories - occupied, occupied but not at home, vacant and temporarily vacant (Table 3.2). Refer to glossary for definitions. 79% of the private households are occupied and about 8% were occupied (not at home). Nevertheless, a significant proportion of about 11% of the private households were vacant and the remaining temporarily vacant.

Note that these figures are exclusively based on the data collected from the 2021 household listing.

Table 3.1: Total households (private and institution) by island division and district.

Division/District	Private Households	Institutions	Total households
Tongatapu	15,849	174	16,023
Kolofo'ou	3,620	132	3,752
Kolomotu'a	3,914	28	3,942
Vaini	2,627	2	2,629
Tatakamotonga	1,540	2	1,542
Lapaha	1,533	1	1,534
Nukunuku	1,692	6	1,698
Kolovai	923	3	926
Vava'u	2,842	34	2,876
Neiafu	1,409	20	1,429
Pangaimotu	145	0	145
Hahake	328	11	339
Leimatu'a	560	3	563
Hihifo	400	0	400
Ha'apai	827	19	846
Pangai	468	14	482
Foa	212	2	214
Mu'omu'a	147	3	150
'Eua	1,075	12	1,087
'Eua Motu'a	629	9	638
'Eua Fo'ou	446	3	449
Ongo Niua	397	1	398
Niuatoputapu	260	1	261
Niuafu'ou	137	0	137
Total	20,990	240	21,230

Note: includes all private households of all status - occupied, occupied (not at home), vacant and temporarily vacant.

Table 3.2: Status of private households

Status	Total Households
Private households	20,990
Occupied	16,585
Occupied (Not at home)	1,693
Vacant	2,436
Temporarily vacant	255
Not stated	21
Institutions	240
Total	21,230

Of the 16,585 occupied private households nearly 78% were headed by male (Table 3.3), while 22% were led by female head of households. Female headed households had an average age of 57 years old which is slightly higher than that of male headed households which is 51 years old.

Table 3.3: Head of occupied private households and average age by sex.

Sex of household head	Private household	Average of age of head
Male	12,879	51
Female	3,665	57
Not stated	41	43
Total	16,585	52

3.3 Overall household counts (including estimates)

For the areas that were excluded from the 2021 household listing data collection (appendix 1), an assumption was made that the number of households and population will remain the same as of the 2016 census as most likely growth is insignificant due to their geographical size and locations. Thus, after this estimation the total household increased to 22,627 were 22,367 are private households and 260 are institutions (Table 3.4). About 6% of the total households were estimates from the 2016 census. The grey shaded rows are the villages that were estimated.

Table 3.4: Total households (private and institution) by division, district and village.

Code	Division/District/Village	Total households	Private households	Institutions
	Tonga	22,627	22,367	260
1	Tongatapu	16,097	15,919	178
11	Kolofo'ou	3,765	3,631	134
1101	Kolofo'ou Tongatapu	1,674	1,632	42
1102	Ma'ufanga	1,509	1,435	74
1103	Nukunukumotu	10	10	0
1104	'Oneata Island	0	0	0
1105	Popua	469	453	16
1106	Tukutonga	100	100	0
1107	Pangaimotu Island	2	1	1
1108	Fafaa	1	0	1
1109	'Onevai	0	0	0
1110	Ataa	0	0	0
12	Kolomotu'a	3,942	3,914	28
1201	Kolomotu'a	1,729	1,715	14
1202	Havelu	795	789	6
1203	Tofoa	737	735	2
1204	Hofoa	271	270	1
1205	Puke	237	237	0
1206	Sia'atoutai	173	168	5
13	Vaini	2,661	2,659	2
1301	Vaini	694	694	0
1302	Malapo	136	136	0
1303	Longoteme	126	126	0
1304	Folaha	183	183	0
1305	Nukuhetulu	70	70	0
1306	Veitongo	255	255	0
1307	Ha'ateiho	524	523	1
1308	Pea	401	400	1
1309	Tokomololo	272	272	0
14	Tatakamotonga	1,542	1,540	2
1401	Tatakamotonga	374	374	0
1402	Holonga Tongatapu	108	108	0
1403	Pelehake	188	187	1
1404	Fua'amotu	386	385	1
1405	Nakolo	82	82	0
1406	Ha'asini	189	189	0
1407	Lavengatonga	92	92	0
1408	Haveluliku	42	42	0
1409	Fatumu	81	81	0
15	Lapaha	1,523	1,521	2

Code	Division/District/Village	Total households	Private households	Institutions
1501	Lapaha	460	459	1
1502	Talasiu	35	35	0
1503	Hoi	88	88	0
1504	Nukuleka	57	57	0
1505	Makaunga	72	72	0
1506	Talafo'ou	73	73	0
1507	Manuka	64	64	0
1508	Navutoka	138	138	0
1509	Kolonga	277	277	0
1510	Afa	88	88	0
1511	Niutoua	150	150	0
1512	'Eueiki	20	19	1
1513	Fukave	1	1	0
16	Nukunuku	1,698	1,692	6
1601	Nukunuku	462	461	1
1602	Matahau	118	117	1
1603	Matafonua	58	58	0
1604	Fatai	71	71	0
1605	Lakepa	63	63	0
1606	Vaotu'u	69	69	0
1607	'Utulau	137	137	0
1608	Ha'alalo	126	125	1
1609	Ha'akame	147	146	1
1610	Houma Tongatapu	447	445	2
17	Kolovai	966	962	4
1701	Kolovai	164	164	0
1702	Te'ekiu	133	133	0
1703	Masilamea	51	51	0
1704	Fahefa	96	96	0
1705	Ha'utu	46	46	0
1706	Kala'au	31	31	0
1707	Fo'ui	127	127	0
1708	Ha'avakatolo	57	57	0
1709	'Ahau	85	85	0
1710	Kanokupolu	78	76	2
1711	Ha'atafu	58	57	1
1712	Atata	40	39	1
2	Vava'u	3,501	3,452	49
21	Neiafu	1,372	1,353	19
2101	Neiafu	1,014	1,000	14
2102	Makave	84	84	0
2103	Toula	98	95	3
2104	Utui	58	58	0

Code	Division/District/Village	Total households	Private households	Institutions
2105	Ofu	42	40	2
2106	Okoa	54	54	0
2107	Olo'ua	22	22	0
22	Pangaimotu	279	272	7
2201	Pangaimotu Vavau	141	141	0
2202	'Utulei	29	28	1
2203	Nga'unoho	41	39	2
2204	'Utungake	67	64	3
2205	Tapana	1	0	1
23	Hahake	486	475	11
2301	Ha'alaufuli	156	153	3
2302	Ha'akio	36	36	0
2303	Houma Vava'u	21	21	0
2304	Mangia	20	20	0
2305	Ta'anea	89	85	4
2306	Tu'anekivale	94	90	4
2307	Koloa	47	47	0
2308	Holeva	23	23	0
24	Leimatu'a	589	586	3
2401	Leimatu'a	278	278	0
2402	Holonga Vavau	105	105	0
2403	Feletoa	84	83	1
2404	Mataika	122	120	2
25	Hihifo	460	460	0
2501	Longomapu	135	135	0
2502	Taoa	110	110	0
2503	Tefisi	115	115	0
2504	Vaimalo	28	28	0
2505	Tu'anuku	72	72	0
26	Motu	315	306	9
2601	Kapa	26	26	0
2602	Falevai	42	40	2
2603	'Otea	34	33	1
2604	Lape	10	10	0
2605	Matamaka	39	39	0
2606	Nuapapu	31	31	0
2607	'Ovaka	28	28	0
2608	Taunga	22	22	0
2609	Hunga	74	74	0
2610	Foeata Island	1	0	1
2611	Vaka'eitu Island	4	2	2
2612	Mounu	1	0	1
2613	Eueiki	1	1	0

Code	Division/District/Village	Total households	Private households	Institutions
2614	Mala	1	0	1
2615	Fofoa Island	1	0	1
3	Ha'apai	1,544	1,524	20
31	Pangai	508	494	14
3101	Pangai Ha'apai	259	249	10
3102	Hihifo Ha'apai	179	175	4
3103	Holopeka	26	26	0
3104	Koulo	44	44	0
32	Foa	298	296	2
3201	Fangale'ounga	38	38	0
3202	Fotua	58	58	0
3203	Lotofoa	82	82	0
3204	faleloa	74	72	2
3205	Ha'afakahenga	23	23	0
3206	Ha'ateiho Si'i	23	23	0
33	Lulunga	264	264	0
3301	Ha`afeva	75	75	0
3302	Tungua	66	66	0
3303	Fotuha'a	27	27	0
3304	'O'ua	33	33	0
3305	Matuku	24	24	0
3306	Kotu	39	39	0
34	Mu'omu'a	150	147	3
3401	Nomuka	122	119	3
3402	Mango	12	12	0
3403	Fonoifua	16	16	0
35	Ha`ano	121	121	0
3501	Fakakai	25	25	0
3502	Pukotala	26	26	0
3503	Ha'ano	35	35	0
3504	Muitoa	9	9	0
3505	Mo'unga'one	26	26	0
36	'Uiha	203	202	1
3601	'Uiha	112	112	0
3602	Felemea	41	41	0
3603	Lofanga	50	49	1
4	'Eua	1,087	1,075	12
41	'Eua Motu'a	638	629	9
4101	Ohonua	311	307	4
4102	Tufuvai	21	21	0
4103	Pangai 'Eua	62	62	0
4104	Houma 'Eua	68	68	0
4105	Ha'atu'a / Kolomaile	118	116	2

Code	Division/District/Village	Total households	Private households	Institutions
4106	Ta'anga	58	55	3
42	'Eua Fo'ou	449	446	3
4201	Angaha	88	88	0
4202	Futu	56	55	1
4203	Esia 'Eua	43	43	0
4204	Sapa'ata 'Eua	32	32	0
4205	Fata'ulua 'Eua	44	44	0
4206	Mu'a 'Eua	33	32	1
4207	Tongamama'o 'Eua	36	35	1
4208	Petani 'Eua	63	63	0
4209	Mata'aho 'Eua	54	54	0
5	Ongo Niu	398	397	1
51	Niuatoputapu	261	260	1
5101	Hihifo Niuatoputapu	118	117	1
5102	Vaipoa	57	57	0
5103	Falehau	65	65	0
5104	Tafari	21	21	0
52	Niuafu'ou	137	137	0
5201	'Esia Niuafu'ou	34	34	0
5202	Kolofo'ou Niuafu'ou	18	18	0
5203	Sapaata Niuafu'ou	32	32	0
5204	Fata'ulua Niuafu'ou	13	13	0
5205	Mata'aho Niuafu'ou	5	5	0
5206	Mu'a Niuafu'ou	8	8	0
5207	Tongamama'o Niuafu'ou	4	4	0
5208	Petani Niuafu'ou	23	23	0

3.4 Household size

Tonga is estimated to have a total of 17,526 private households that are occupied in 2021 by an overall of 95,321 people (Table 3.5). There is an average of 5.4 persons per households. The grey shaded rows are of villages estimated based on 2016 census.

Table 3.5: Private households and number of occupants by division, district and village.

Code	Division/District/Village	Private households	Number of occupants
	TONGA	17,526	95,321
1	Tongatapu	12,646	70,562
11	Kolofo'ou	2,726	15,661
1101	Kolofo'ou Tongatapu	1,267	6,684
1102	Ma'ufanga	1,051	6,338
1103	Nukunukumotu	8	50

Code	Division/District/Village	Private households	Number of occupants
1104	Oneata Island	0	0
1105	Popua	304	1,948
1106	Tukutonga	95	635
1107	Pangaimotu Tongatapu	1	6
1108	Fafaa	0	0
1109	'Onevai	0	0
1110	Ataa	0	0
12	Kolomotu'a	3,097	16,605
1201	Kolomotu'a	1306	6815
1202	Havelu	636	3515
1203	Tofoa	609	3271
1204	Hofoa	210	1290
1205	Puke	182	1072
1206	Sia'atoutai	154	642
13	Vaini	2,089	11,850
1301	Vaini	503	2,885
1302	Malapo	88	504
1303	Longoteme	113	674
1304	Folaha	146	795
1305	Nukuhetulu	65	372
1306	Veitongo	207	1,258
1307	Ha'ateiho	432	2,438
1308	Pea	325	1,751
1309	Tokomololo	210	1,173
14	Tatakamotonga	1,235	7,028
1401	Tatakamotonga	295	1,708
1402	Holonga Tongatapu	90	533
1403	Pelehake	140	784
1404	Fua'amotu	283	1,587
1405	Nakolo	75	462
1406	Ha'asini	164	942
1407	Lavengatonga	80	414
1408	Haveluliku	35	185
1409	Fatumu	73	413
15	Lapaha	1,270	7,193
1501	Lapaha	374	2188
1502	Talasiu	33	166
1503	Hoi	80	449
1504	Nukuleka	49	299
1505	Makaunga	61	356
1506	Talafo'ou	58	291
1507	Manuka	51	284
1508	Navutoka	114	697

Code	Division/District/Village	Private households	Number of occupants
1509	Kolonga	232	1,221
1510	Afa	77	469
1511	Niutoua	128	695
1512	'Eueiki	12	77
1513	Fukave	1	1
16	Nukunuku	1,454	7,962
1601	Nukunuku	390	1,975
1602	Matahau	103	579
1603	Matafonua	49	242
1604	Fatai	55	294
1605	Lakepa	54	267
1606	Vaotu'u	63	326
1607	'Utulau	119	666
1608	Ha'alalo	113	702
1609	Ha'akame	129	764
1610	Houma Tongatapu	379	2,147
17	Kolovai	775	4,263
1701	Kolovai	121	542
1702	Te'ekiu	102	544
1703	Masilamea	48	303
1704	Fahefa	81	462
1705	Ha'utu	35	204
1706	Kala'au	27	152
1707	Fo'ui	110	646
1708	Ha'avakatolo	38	199
1709	'Ahau	75	452
1710	Kanokupolu	64	335
1711	Ha'atafu	43	247
1712	'Atata	31	177
2	Vava'u	2,647	13,383
21	Neiafu	1,039	5,164
2101	Neiafu	762	3,730
2102	Makave	59	307
2103	Toula	79	367
2104	Utui	53	299
2105	Ofu	26	120
2106	Okoa	46	264
2107	Olo'ua	14	77
22	Pangaimotu	217	1,153
2201	Pangaimotu Vavau	115	609
2202	'Utulei	24	116
2203	Nga'unoho	27	179
2204	Utungake	51	249

Code	Division/District/Village	Private households	Number of occupants
2205	Tapana	0	0
23	Hahake	385	2,047
2301	Ha'alaufuli	123	657
2302	Ha'akio	23	125
2303	Houma Vavau	17	103
2304	Mangia	17	102
2305	Ta'anea	76	391
2306	Tu'anekeviale	77	397
2307	Koloa	31	142
2308	Holeva	21	130
24	Leimatu'a	478	2,527
2401	Leimatu'a	219	1,239
2402	Holonga Vavau	96	415
2403	Feletoa	69	409
2404	Mataika	94	464
25	Hihifo	356	1,771
2501	Longomapu	106	505
2502	Taoa	85	427
2503	Tefisi	88	444
2504	Vaimalo	23	112
2505	Tu'anuku	54	283
26	Motu	172	721
2601	Kapa	10	42
2602	Falevai	20	79
2603	Otea	23	96
2604	Lape	5	24
2605	Matamaka	23	79
2606	Nuapapu	23	98
2607	Ovaka	20	97
2608	Taunga	9	28
2609	Hunga	39	178
2610	Foeta Island	0	0
2611	Vaka'eitu	0	0
2612	Mounu	0	0
2613	Eueiki	0	0
2614	Mala	0	0
2615	Fofoa Island	0	0
3	Ha'apai	1,098	5,546
31	Pangai	357	1,762
3101	Pangai Ha'apai	171	860
3102	Hihifo Ha'apai	129	597
3103	Holopeka	22	126
3104	Koulo	35	179

Code	Division/District/Village	Private households	Number of occupants
32	Foa	222	1,142
3201	Fangale'ounga	24	140
3202	Fotua	45	197
3203	Lotofoa	70	362
3204	faleloa	47	248
3205	Ha'afakahenga	17	90
3206	Ha'ateiho Si'i	19	105
33	Lulunga	184	923
3301	Ha'afeva island	57	297
3302	Tungua	37	187
3303	Fotuha'a	19	105
3304	'O'ua	25	116
3305	Matuku	16	89
3306	Kotu	30	129
34	Mu'omu'a	108	559
3401	Nomuka	84	435
3402	Mango	8	41
3403	Fonoifua	16	83
35	Ha'ano	89	478
3501	Fakakai	25	150
3502	Pukotala	18	89
3503	Ha'ano	24	123
3504	Muitoa	7	53
3505	Mo'unga'one	15	63
36	'Uiha	138	682
3601	'Uiha	76	378
3602	Felemea	31	180
3603	Lofanga	31	124
4	'Eua	873	4,652
41	'Eua motu'a	516	2,645
4101	'Ohonua	254	1,312
4102	Tufuvai	21	109
4103	Pangai 'Eua	46	238
4104	Houma 'Eua	61	293
4105	Ha'atu'a / Kolomaile	90	473
4106	Ta'anga	44	220
42	'Eua Fo'ou	357	2,007
4201	Angaha	63	360
4202	Futu	48	232
4203	Esia 'Eua	37	213
4204	Sapa'ata 'Eua	23	123
4205	Fata'ulua 'Eua	33	206
4206	Mu'a 'Eua	20	119

Code	Division/District/Village	Private households	Number of occupants
4207	Tongamama'o 'Eua	27	158
4208	Petani 'Eua	55	304
4209	Mata'aho 'Eua	51	292
5	Ongo Niua	262	1,178
51	Niuatoputapu	158	741
5101	Hihifo Niuatoputapu	67	323
5102	Vaipoa	36	156
5103	Falehau	45	216
5104	Tafahi	10	46
52	Niuafou'ou	104	437
5201	'Esia Niuafou'ou	24	104
5202	Kolofo'ou Niuafou'ou	14	59
5203	Sapaata Niuafou'ou	25	103
5204	Fata'ulua Niuafou'ou	9	36
5205	Mata'aho Niuafou'ou	5	21
5206	Mu'a Niuafou'ou	4	13
5207	Tongamama'o Niuafou'ou	3	15
5208	Petani Niuafou'ou	20	86

4. Appendices

Appendix 1: List of excluded CU

Tongatapu	Vava'u	Ha'apai
1103011	2105011	3103011
1104011	2107011	3201011
1107011	2202011	3205011
1108011	2203011	3206011
1109011	2205011	3302011
1110011	2302011	3303011
1512011	2303011	3304011
1513011	2304011	3305011
1712011	2307011	3306011
	2308011	3501011
	2601011	3502011
	2602011	3503011
	2603011	3504011
	2604011	3505011
	2605011	3602011
	2606011	3603011
	2607011	3601011
	2608011	3601012
	2609011	3601013
	2610011	3301011
	2611011	3301012
	2612011	
	2613011	
	2614011	
	2615011	
	2504011	

Appendix 2: Listing Template



TEAM ID:

ENUMERATOR ID:

Date recorded:

The following details is provided in the n

DIVISION:

DISTRICT:

Village:

CU CODE:

CODES		
Household/Institution	Status	Sex of head
1 - Private Household	1 - Occupied	1 - Male
2 - Institution	2 - Occupied (Not at home)	2 - Female
	3 - Vacant	
	4 - Temporarily Vacant	

1 HH No.	2 Household / Institution <i>If 2 skip to 4</i>	3 Status	4 Name of Head of Household/Institution <i>If 2=2 skip to 8</i>	5 Sex of head	6 Age of head	7 Number of household member	8 Latitude			9 Longitude		
							Direction	Degrees	Decimal degrees	Direction	Degrees	Decimal degrees
1												
2												
3												
4												
5												
6												
7												
8												
9												
10												
11												
12												
13												
14												
15												
16												
17												
18												
19												
20												
21												
22												
23												
24												
25												
26												
27												
28												
29												
30												
31												
32												
33												
34												
35												
36												
37												
38												
39												
40												

Appendix 3: List of personnel involved in the Tonga Household Listing 2021

Enumerators/Lister

Akusitina Fuimaono	Ilaisaane Fonua	Naseem Mohamett
Ana Kama	Ilaisaane Mamata	Ofeina He
Ana Kuliha'apai	Ilaisaane Tu'ipulotu	Patelesio Hoponoa
Ana Lavulavu	Josephine Hausia	Saia Malolo
Ana Moa	Katieli Mahe	Saia Mohu
Christina Tai	Kosilio Faka'osi	Salote Latu
Elenoa Loloma	Langilangi Taukei'aho	Samisoni Fotu
Ema Mo'ononia	Lesieli Foketi	Talaivosa Falepaina
Faka'anaua Mafile'o	Liliane Veikoso	Timote Vaiioleti
Falemasiva Fonua	Lupe Tupou	Tutulu Finau
Fatai Kaufusi	Makisi Moala	Ulu 'Ealelei
Felix Fe'iloaki	Maletino Hola	Vaolose Lapa
Fifita Falemei Aniseko	Matamoana Faáoa	Viliami Fifita
Folola 'Ukakala	Mele Taumoepeau	
Heneli Sio	Meliame Latu	

Supervisors

Sione Lolohea	Telekaki Latavao
Ativeniana Pomana	Luisa Veapina Uasike
Lusia Kaitapu	Vaimoana Soakimi
Inid Maea	Tevita Tu'ineau
Masivailo Masila	

Management Team

Sione Lolohea	Head of Census & Survey Division
Ativeniana Pomana	Manager
Lu'isa Veapina Uasike	Logistic & recruitment officer
Lusia Kaitapu	Field coordinator
Ofeina He	Logistic & recruitment officer

Main Trainers

Ativeniana Pomana
Telekaki Latavao
Lusia Kaitapu
Vaimoana Soakimi
Lu'isa Veapina Uasike
Ofeina He