

Census Re-Boundary



Timor Statistics
Department

Ativeniana Pomana

Outline

- Concept & uses
- Census boundary history
- Current framework – Census boundaries
- The need to revise
- Tonga Statistical Geography framework
- Challenges
- Wrap-up

Census Boundaries

- Zonal division of the land area of Tonga.
 - Organize and monitor data collect
 - Sampling in surveys
 - Locating households
 - Location-based analysis
 - Data dissemination – maps, infographics

CENSUS BOUNDARY HISTORY

11 Sub-Districts, 203 Eas
Niuafu'ou & Tafahi
included to
Niuatoputapu district.

416 census blocks
Census block maps

Digitized maps

Household GPS
collection & field
monitor

1956

1976

1996

2011

1966

1986

2006

2016

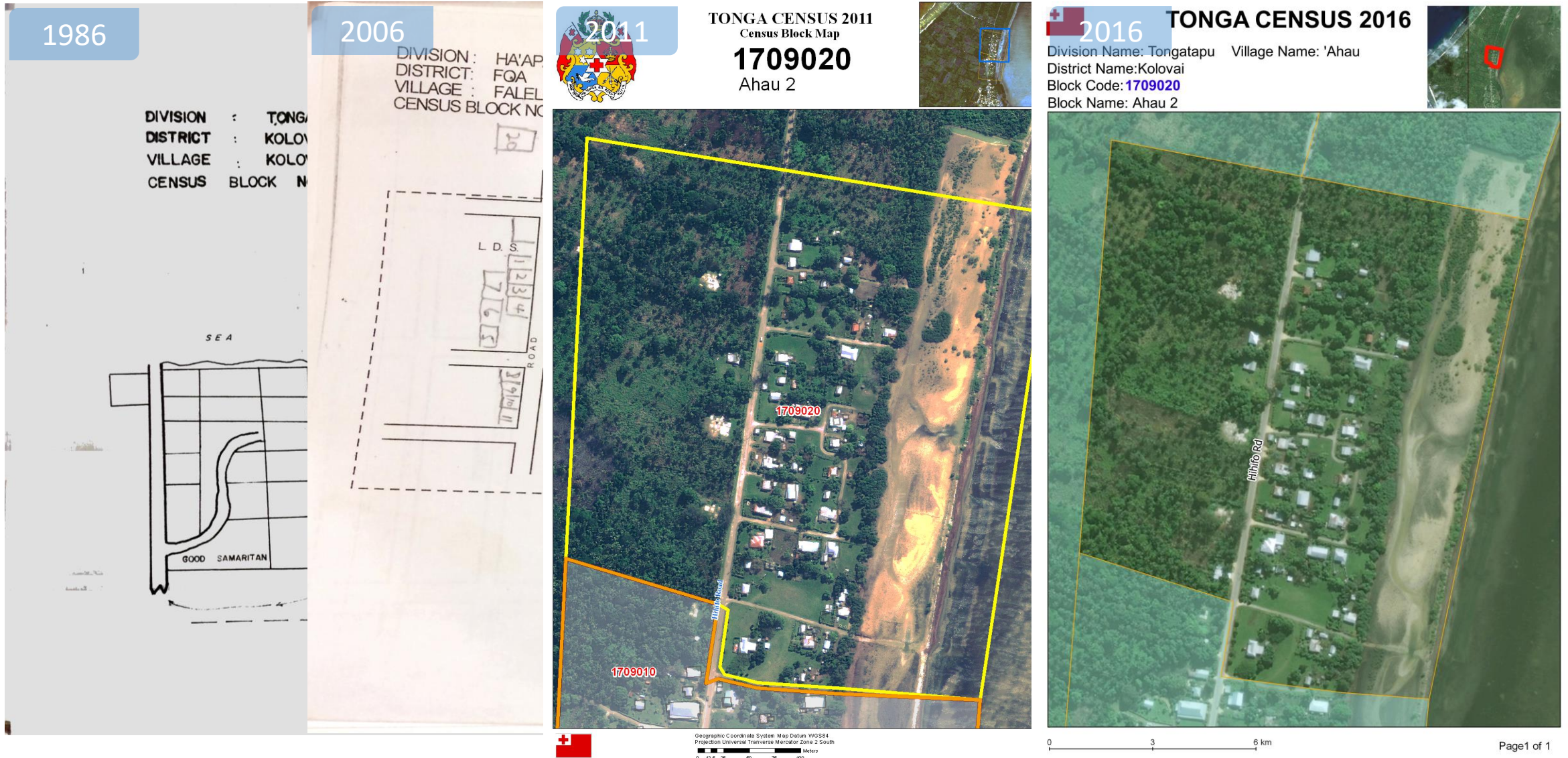
5 Districts, 9 Sub-
districts, 136 EA (village)

New demarcation
Similar framework
Average block size of 50

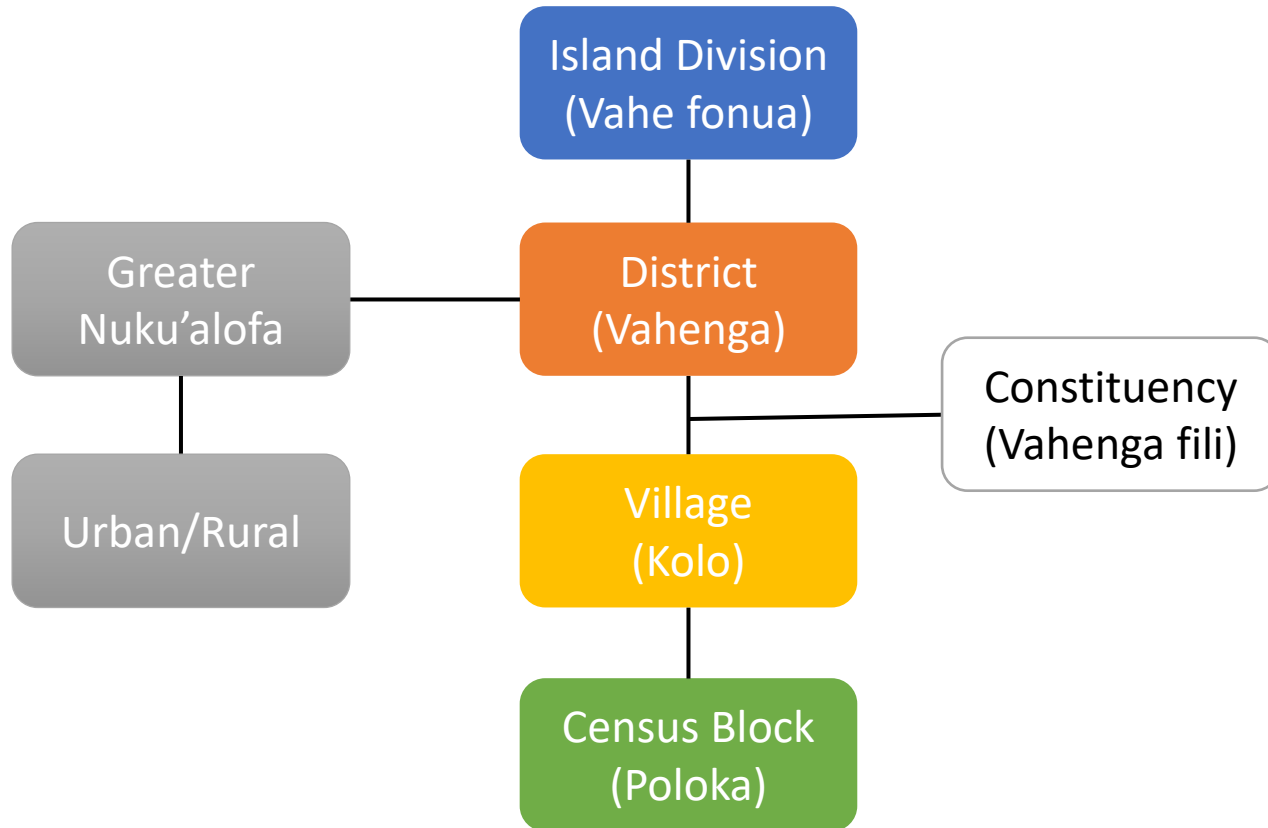
442 census blocks
maps

Arial images

Census block map



Current framework - structure



- Census blocks has an average of households 50
- Total of 640 blocks
- 166 villages
- 23 districts
- 5 island divisions

Current framework – Coding system

7-digit code: 4101010

Island
Division

District

Village

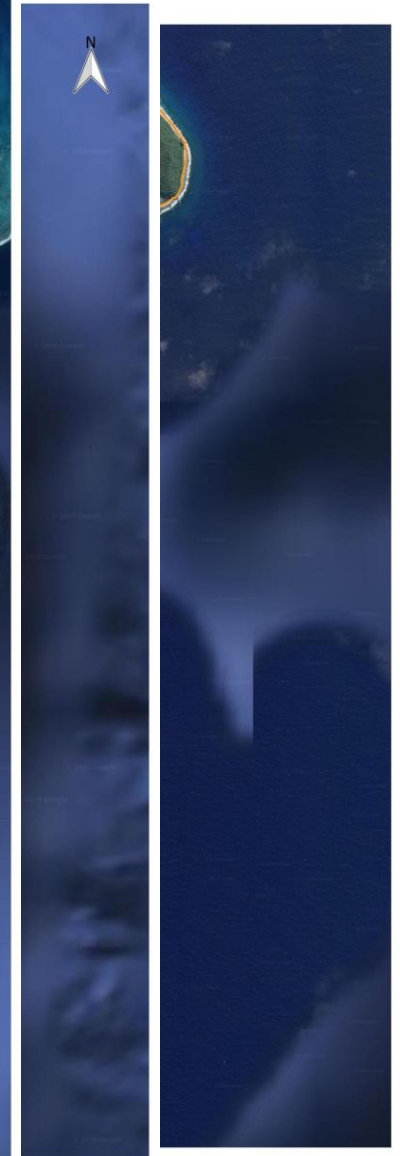
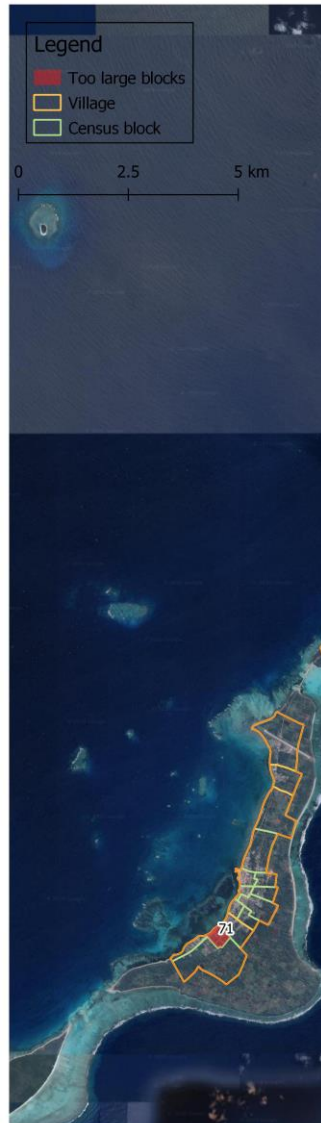
Census
block



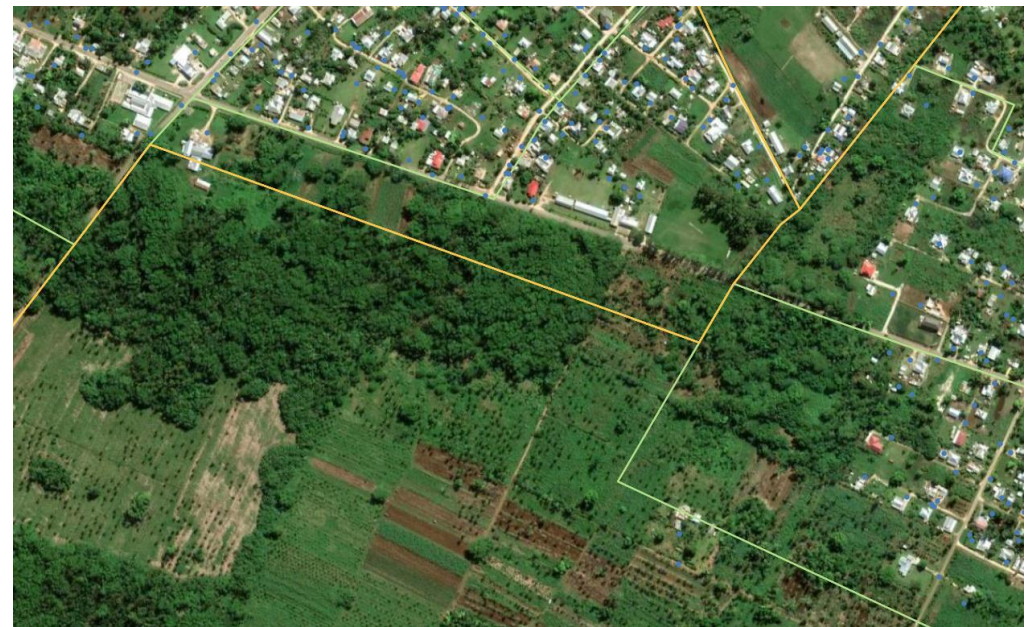
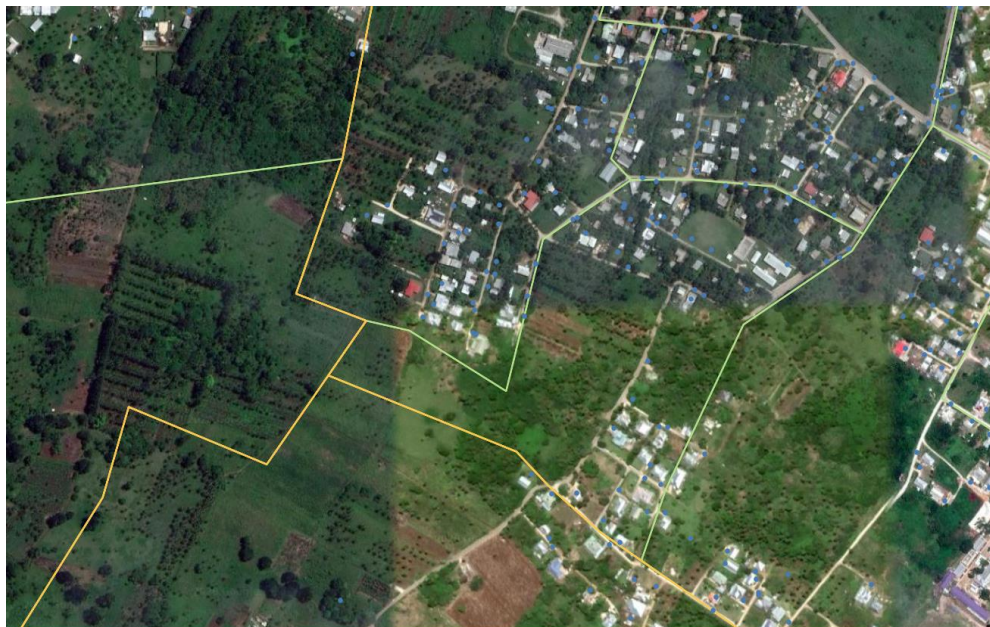
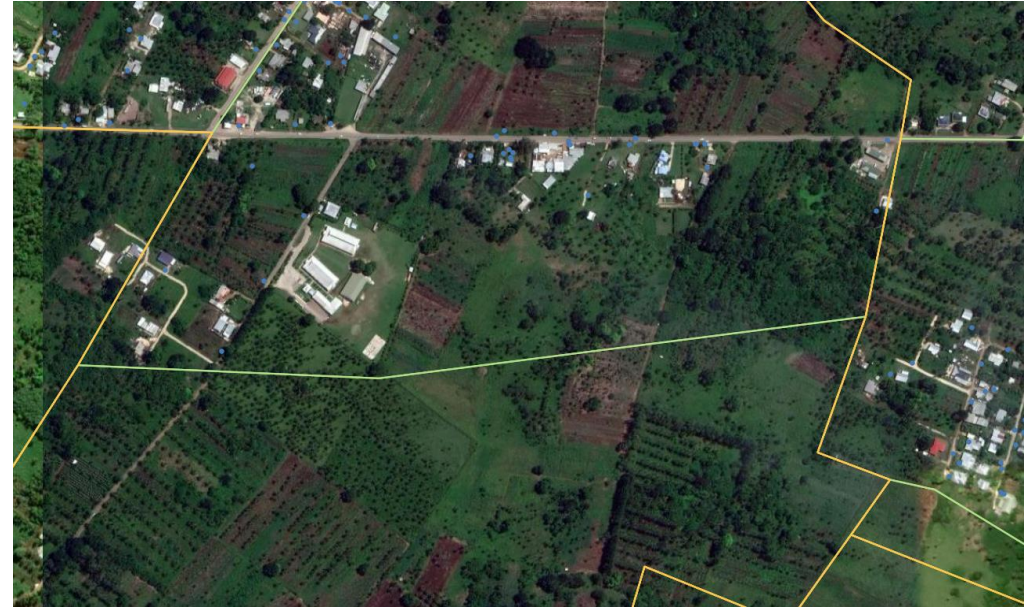
The need to revise

- Too large and too small census block size
- Improve efficiency and accuracy during data collection
- Unclear census block boundaries
- Data demand at semi-village level (eg. Pahu, Fanga, etc)

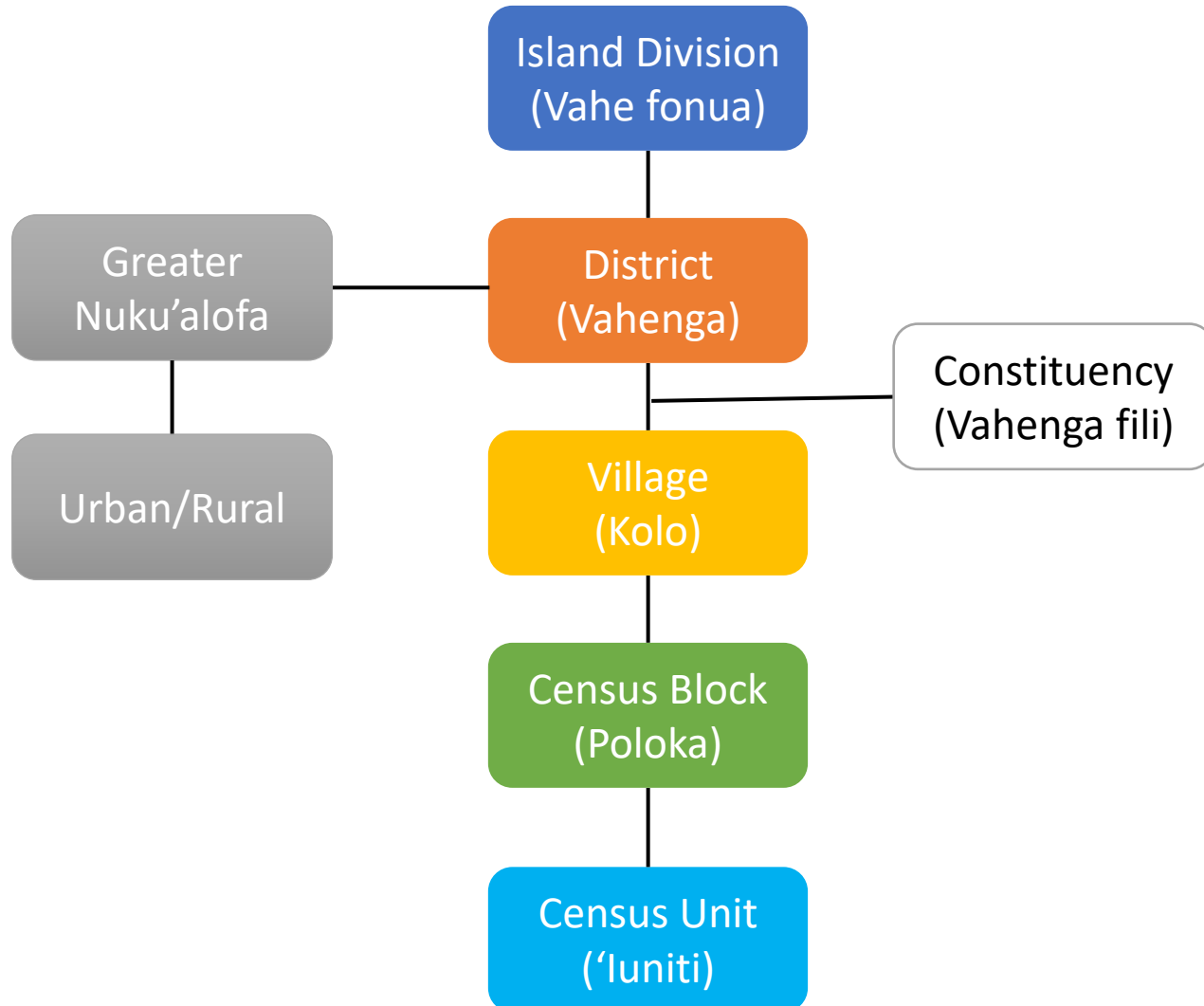
Too large blocks size



Fuzzy boundaries

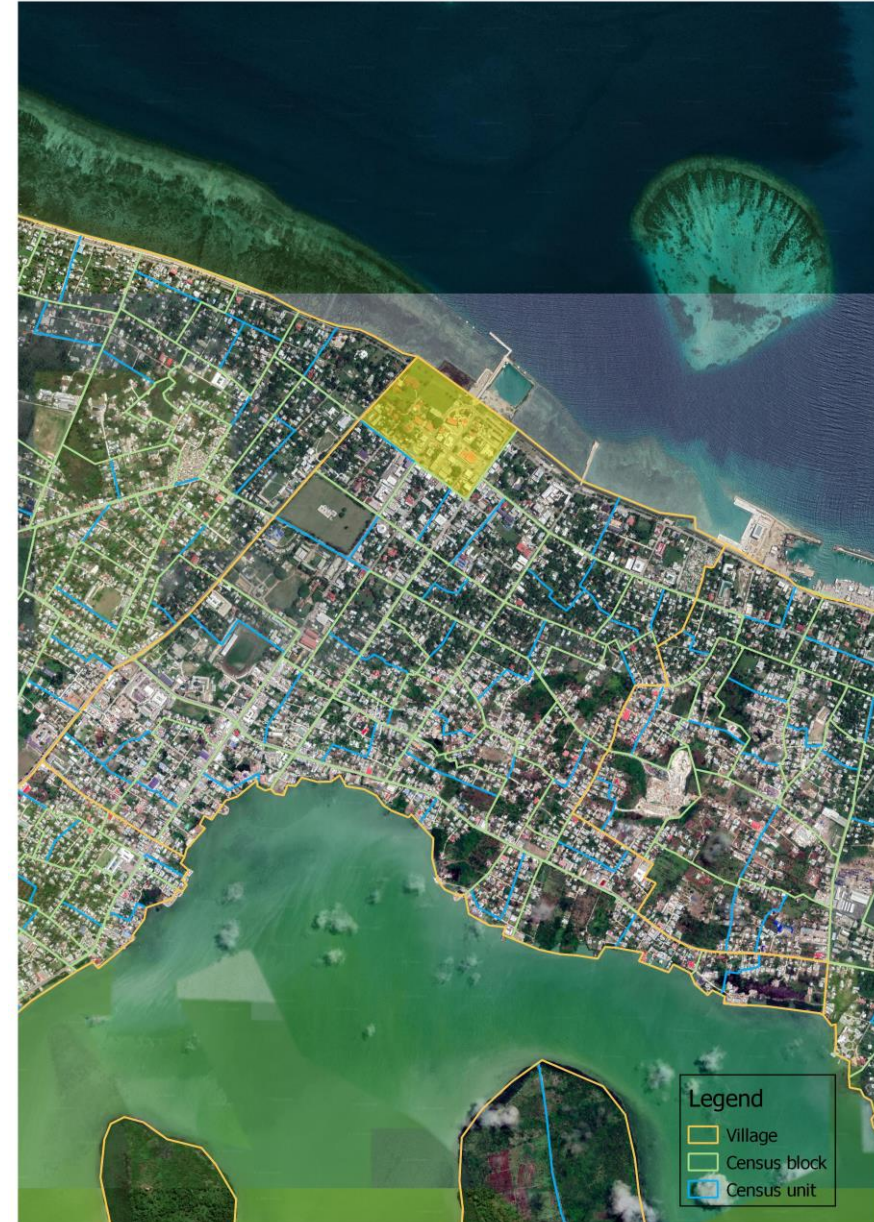
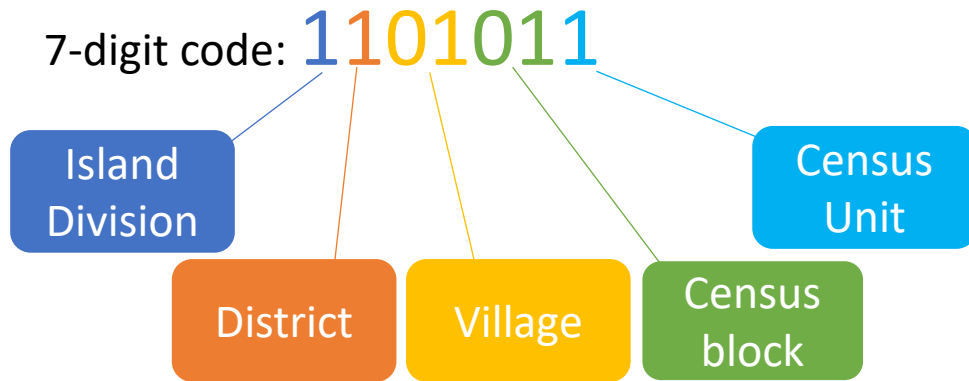


Tonga Statistical Geography Framework



- Census unit average of 20-30 households
- Maintains the boundaries of village, district and island division
- Delineates new census block boundaries
- Census block 383
- Census unit 754

Tonga Statistical Geography Framework – coding system



Challenges

- Delineating clear cut boundaries
- Limited data availability
- Difference between pre-existing boundaries amongst sources
- Fuzzy boundaries at semi-village level
- Meeting data demand at semi-village
- Restrictions due laws and policies

Wrap- up

- Boundaries revision is based on limited existing data and local consultation.
- Such frameworks needs to be standardized at all level.
- Changes at village & district level may need policy interventions and collaboration with relevant ministries.