



KINGDOM OF TONGA

Consumer Price Index

Statistical Bulletin

SEPTEMBER 2023



Statistics Department
P.O. Box 149
Nuku'alofa
Kingdom of Tonga

Website: tongastats.gov.to
E-mail: dept@stats.gov.to

Oct - 2023
Price: TOP 5.00

Table of Contents

Overview.....	2
Annual Inflation Rate:.....	3
About the Consumer Price Index.....	15

List of Figures

Figure 1 Graphical representation of Consumer Price Index for September 2023 – September 2022 Total, Local and Imported Components	3
Figure 2 Graphical representation of Inflation rate (%) September 2023 -September 2022 for Local, Imported and All Items as measured by Consumer Price Index.....	3
Figure 3 Contribution to % change from previous month, All groups: August 2023 to September 2023	4
<i>Figure 4 Contributions to % change from last year, all groups: September 2022 to September 2023.....</i>	<i>5</i>

List of Tables

Table 1 Contribution to % change from previous month, All groups: August 2023 to September 2023	4
Table 2 Contributions to % change from last year, all groups: September 2022 to September 2023.....	5
Table 3 Consumer Price Index by Major Groups, September 2023	6
Table 4 Consumer Price Index and Inflation Rate, September 2023.....	8
Table 5 Continuation of Table 4 Consumer Price Index and Inflation Rate, September 2023 ..	9
Table 6 Consumer Price Index with local and imported components, Percentage change from previous month, September 2023	10
Table 7 Consumer Price Index with local and imported components, Percentage change from same month of previous year, September 2023	11
Table 8 Consumer Price Index: Groups and subgroups - index numbers, September 2023 ..	12
Table 9 Monthly average price of selected local items, September 2023	13
Table 10 Monthly average price of selected imported items, August 2023	14
Table 11 New vs old weights at the COICOP Division Level	15

Overview

CONSUMER PRICE INDEX FOR SEPTEMBER 2023.

(Base Period: September 2018 = 100.0)

Consumer Price Index Increased by **0.5%**,
Inflation Rate is **3.1%**

The Consumer Price Index covers price changes in Tongatapu and Vava'u. The weights were derived from the Household Income and Expenditure Survey (HIES) (2015-2016). Also, the groups use all different grouping of the Classification of Individual Consumption by Purpose (COICOP).

1. The **Consumer Price Index (CPI)** for **September 2023** increased by **0.5%** from **123.9** in the previous month to **124.5**. Over the previous two months, the index for all items decreased by **0.8%** in **August 2023** and decreased by **0.6%** in **July 2023**. When comparing the **local** and **imported** indices for **September 2023** to the previous month, Local index decreased by **0.1%** and import index increased by **0.9%**.
2. The **rate of inflation** for **September 2023** is **3.1%** compared to **2.9%** in previous month. The **annual inflation rate** for the same month of previous year, **September 2022**, was **14.0%**. When comparing the **annual change** in the **local** and **imported indices** for **September 2023**, the local index recorded an increase by **1.3%** and import index also increased by **4.5%**.

Changes in each group compared with the previous month are as follows:

- | | |
|--------------------------------------------------------------------------------------------------------------------------------------------------------------------------------------------------------------------------------------------------------------------------------------------------------------------------------------------------------------------------------------------------------------------------------------------------------------------------------------------------------------------------------------------|--------------|
| A. FOOD AND NON-ALCOHOLIC BEVERAGES | -0.2% |
| Although prices of some items increased during the month, the overall change was offset and resulted as a slight decrease towards the index position of September 2023 . This was mainly due to decrease in price of some local food item such as meat and seafood that includes lobster, sword fish, cockle pips and octopus , vegetables and root crops like tomatoes, capsicum, taro leaves, early yam and dry land taro Imported items include orange and salted beef that decreased throughout the month. | |
| B. ALCOHOLIC BEVERAGES, TOBACCO, AND KAVA | 0.0% |
| Price of items in this group recorded no change compared to the previous month. | |
| C. CLOTHING AND FOOTWEAR | 0.1% |
| Price of items in this group resulted in a slight increase towards the index position of September 2023 . This was mainly due to decrease in price of flip flops . | |
| D. HOUSING, WATER, ELECTRICITY AND GAS. | -0.3% |
| Although prices of some items increased during the month, the overall change was offset and resulted as a decrease towards the index position of September 2023 . This was mainly due to decrease in price of timber . | |

E. FURNISHINGS, HOUSEHOLD EQUIPMENT AND HOUSEHOLD MAINTENANCE	0.9%
The price of items in this group recorded an increase due to increase in price of <i>Dishwashing liquid and aluminium foil</i> compared to the previous month.	
F. HEALTH	0.0%
Price of items in this group recorded no change compared to the previous month.	
G. TRANSPORT	3.3%
Price of items in this group recorded a significant increase towards the index position of September 2023 . This was mainly due to increase in price of both <i>petrol</i> and <i>diesel</i> .	
H. COMMUNICATIONS	0.0%
Price of items in this group recorded no change compared to the previous month.	
I. RECREATION AND CULTURE	0.0%
Price of items in this group recorded no change compared to the previous month.	
J. EDUCATION	0.0%
Price of items in this group recorded no change compared to the previous month.	
K. RESTAURANTS AND HOTELS	0.0%
Price of items in this group recorded no change compared to the previous month.	
L. MISCELLANEOUS GOODS AND SERVICES	1.3%
Price of items in this group recorded an increase, mainly due to increase in price of <i>diaper and toilet paper</i> compared to the previous month.	



Mrs Mele Taumoepeau
Acting Government Statistician

ISSUED BY

Tonga Statistics Department, P.O. Box 149, Nuku'alofa, Kingdom of Tonga.
Telephone: (676) 23-300/23-913 Website: www.tongastats.gov.to Email: tfinau@stats.gov.to

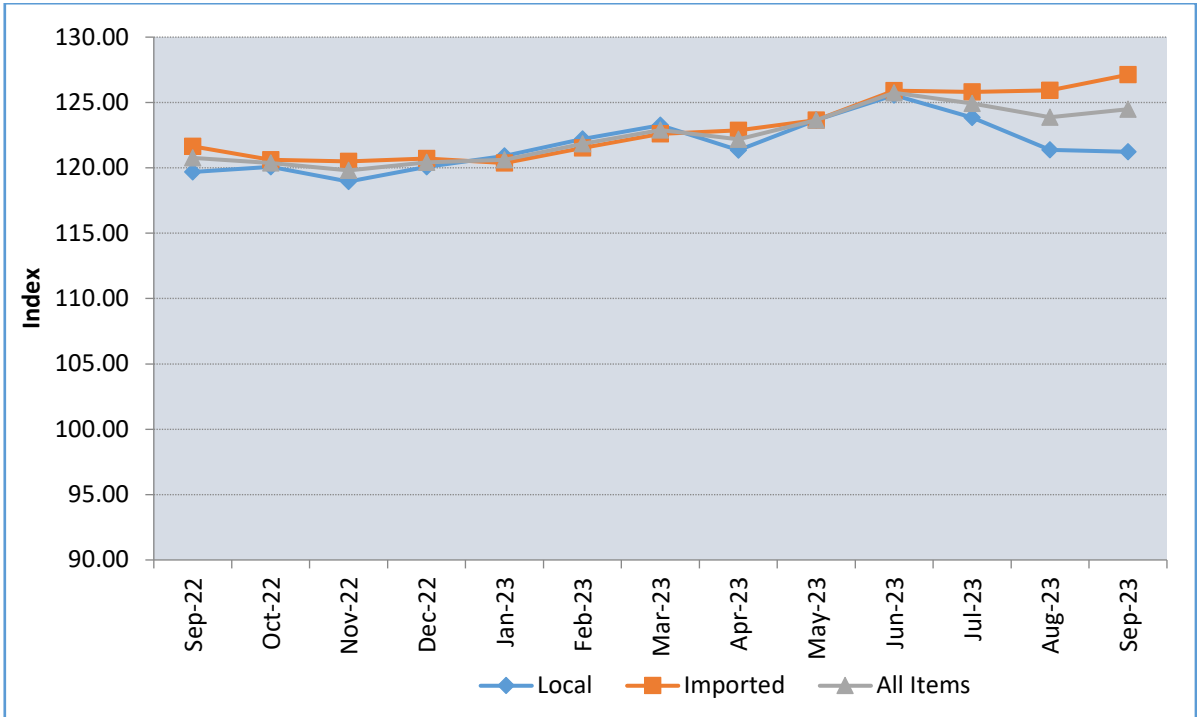


Figure 1 Graphical representation of Consumer Price Index for September 2023 – September 2022 Total, Local and Imported Components

Annual Inflation Rate:

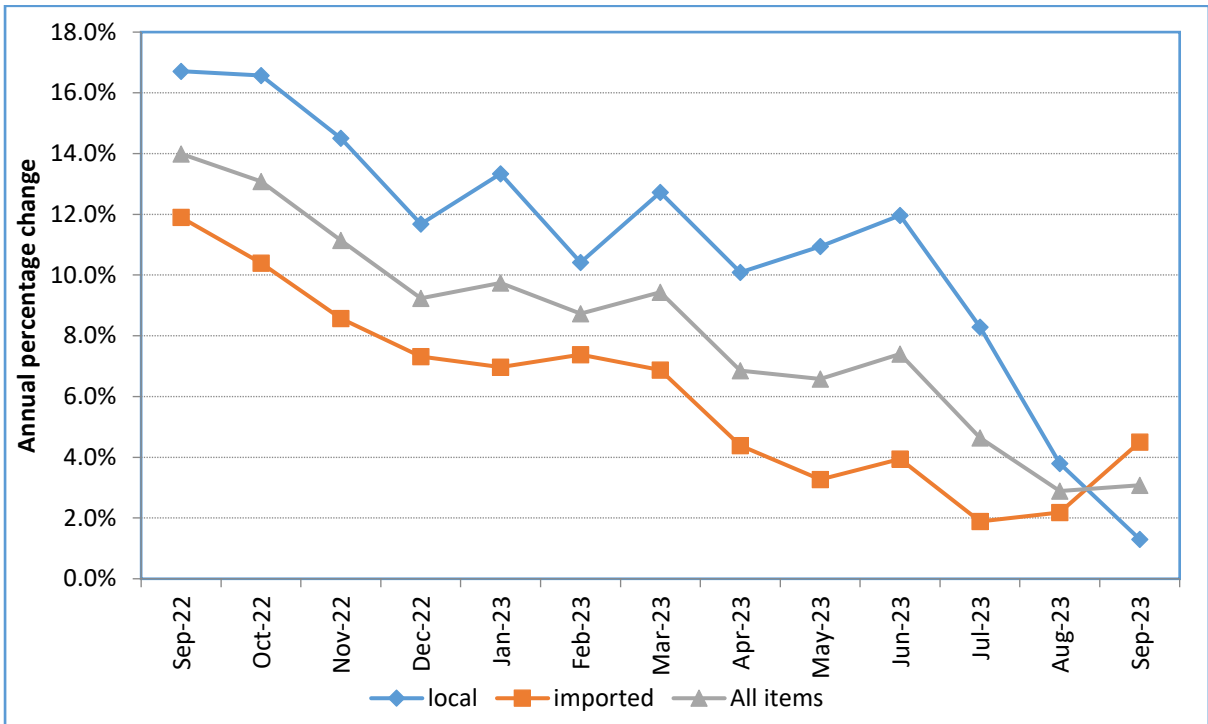


Figure 2 Graphical representation of Inflation rate (%) September 2023 -September 2022 for Local, Imported and All Items as measured by Consumer Price Index

Table 1 Contribution to % change from previous month, All groups: August 2023 to September 2023

Group	Local	Imported	Total
Food and non-alcoholic beverages	-0.07%	-0.04%	-0.10%
Alcoholic beverages, tobacco and kava	0.00%	0.00%	0.00%
Clothing and footwear	0.00%	0.00%	0.00%
Housing, water, electricity, gas and other fuels	0.02%	-0.05%	-0.04%
Furnishings, household equipment and routine household maintenance	0.00%	0.03%	0.03%
Health	0.00%	0.00%	0.00%
Transport	0.00%	0.54%	0.54%
Communication	0.00%	0.00%	0.00%
Recreation and culture	0.00%	0.00%	0.00%
Education	0.00%	0.00%	0.00%
Restaurants and hotels	0.00%	0.00%	0.00%
Miscellaneous goods and services	0.00%	0.05%	0.05%
TOTAL	-0.05%	0.53%	0.5%

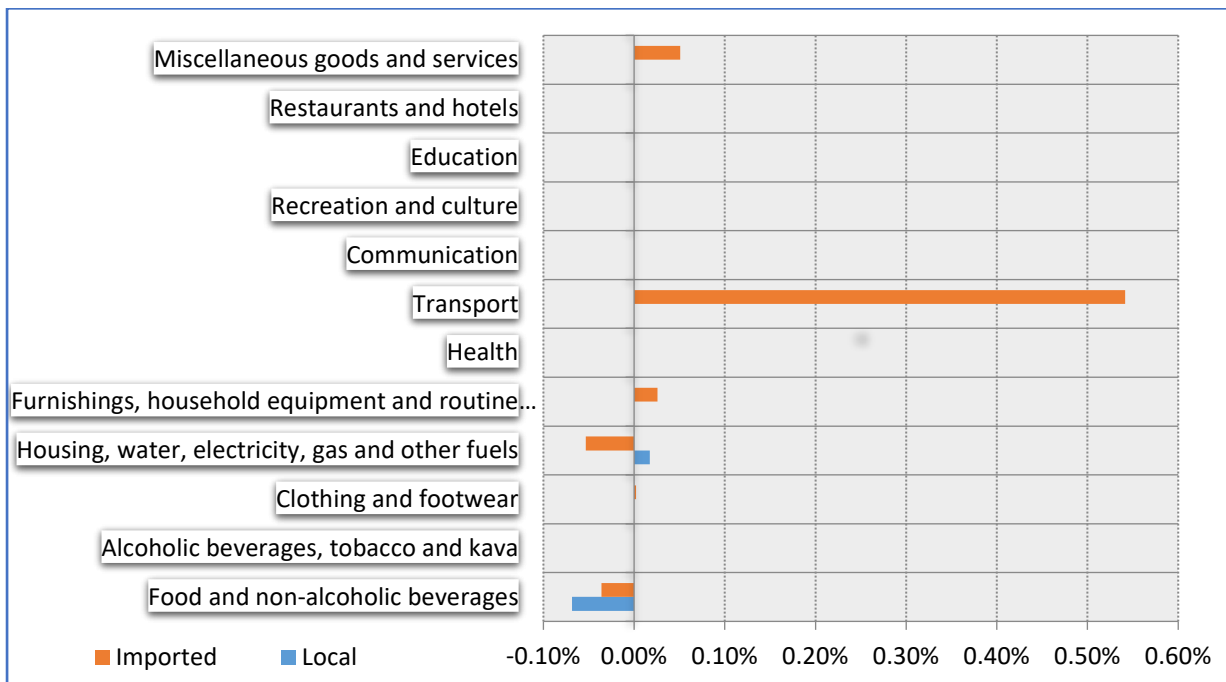


Figure 3 Contribution to % change from previous month, All groups: August 2023 to September 2023

Table 2 Contributions to % change from last year, all groups: September 2022 to September 2023

Group	Local	Imported	Total
Food and non-alcoholic beverages	1.14%	1.13%	2.3%
Alcoholic beverages, tobacco and kava	0.01%	0.12%	0.1%
Clothing and footwear	0.00%	0.14%	0.1%
Housing, water, electricity, gas and other fuels	-1.43%	0.20%	-1.2%
Furnishings, household equipment and routine household maintenance	0.03%	0.16%	0.2%
Health	0.00%	0.00%	0.0%
Transport	0.18%	0.53%	0.7%
Communications	0.11%	0.00%	0.1%
Recreation and culture	0.00%	0.07%	0.1%
Education	0.17%	0.00%	0.2%
Restaurants and hotels	0.38%	0.00%	0.4%
Miscellaneous goods and services	0.00%	0.13%	0.1%
TOTAL	0.58%	2.50%	3.1%

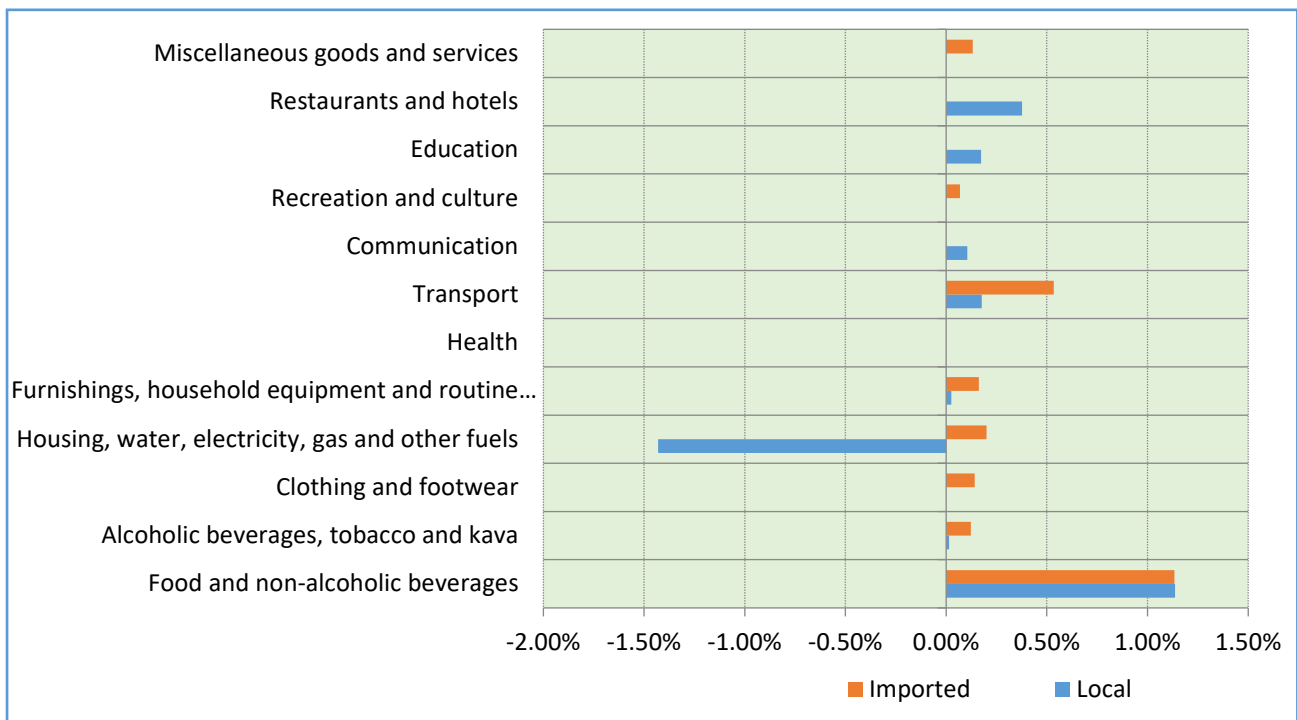


Figure 4 Contributions to % change from last year, all groups: September 2022 to September 2023

Table 3 Consumer Price Index by Major Groups, September 2023

Year/month	All items	Food and non-alcoholic beverages	Alcoholic beverages, tobacco and kava	Clothing and footwear	Housing, water, electricity and gas	Furnishings, household equipment and household maintenance	Health	Transport	Communication	Recreation and culture	Education	Restaurants and hotels	Miscellaneous goods and services
<i>Weight</i>	100%	39.8%	11.6%	2.1%	10.8%	3.2%	0.3%	16.4%	5.2%	1.1%	2.2%	3.1%	4.2%
2019													
January	99.7	100.1	100.1	102.6	101.0	99.8	100.0	94.4	100.0	103.6	104.2	108.2	101.0
February	99.9	101.1	100.2	102.9	101.5	100.1	100.0	92.4	100.0	103.6	104.2	108.2	101.0
March	100.4	102.2	99.7	101.5	100.9	100.5	100.0	93.9	100.0	103.6	104.2	108.2	99.8
April	98.7	98.1	98.1	101.5	98.9	100.6	100.0	96.3	100.0	103.6	104.2	108.2	99.8
May	99.6	99.5	97.7	101.5	98.9	100.7	100.0	98.5	100.0	103.6	104.2	108.2	98.8
June	99.8	99.6	97.2	101.5	100.2	100.8	100.0	99.0	100.0	103.6	104.2	108.2	98.8
July	100.0	100.8	97.5	102.1	100.3	101.7	100.0	97.1	100.0	103.6	104.2	108.2	98.6
August	100.5	102.2	97.3	102.1	100.3	101.7	100.0	96.4	100.0	103.6	104.2	108.2	98.9
September	100.4	102.0	96.8	103.8	99.0	102.0	100.0	97.4	100.0	103.6	104.2	108.2	98.9
October	100.9	102.8	96.5	103.8	100.0	102.0	100.0	98.3	100.0	103.6	104.2	108.2	99.3
November	100.4	100.7	96.6	103.9	100.4	102.1	100.0	99.4	101.6	103.6	104.2	108.2	99.7
December	100.6	101.4	95.1	104.3	100.8	100.5	100.0	99.7	101.6	103.6	104.2	108.2	99.8
2020													
January	100.3	100.5	95.5	105.5	100.5	100.5	100.0	99.7	101.6	103.6	104.2	108.2	99.9
February	100.6	101.6	94.7	106.1	100.6	100.2	100.0	99.6	101.6	103.6	104.8	108.2	100.0
March	100.8	102.3	94.7	106.1	102.6	100.3	100.0	97.4	101.6	103.6	104.8	108.2	100.8
April	100.0	102.8	93.9	106.5	98.9	102.2	100.0	94.7	99.9	103.6	104.8	108.2	99.7
May	99.6	104.0	95.5	108.8	99.2	103.3	100.0	87.6	99.9	103.6	104.8	108.2	100.2
June	98.4	102.6	99.4	109.1	96.9	103.3	100.0	82.3	99.9	103.6	104.8	108.2	100.3
July	98.9	103.5	100.3	109.1	89.7	102.5	100.0	87.2	99.9	103.6	104.8	108.2	100.6
August	98.8	102.1	100.3	110.5	89.2	102.5	100.0	90.2	99.9	103.6	104.8	108.2	100.8
September	99.4	102.9	100.4	110.5	89.2	102.7	100.0	91.8	99.9	103.6	104.8	108.2	100.8
October	99.3	102.8	100.0	112.6	89.1	103.4	100.0	91.6	99.9	103.6	104.8	108.2	100.8
November	99.7	103.2	100.1	112.6	90.6	104.1	100.0	91.3	99.9	103.6	104.8	108.2	100.9
December	100.9	105.2	100.3	112.6	93.8	104.4	100.0	91.5	99.9	103.6	104.8	108.2	101.4
2021													
January	101.6	106.2	100.1	114.3	94.0	103.9	100.0	93.1	99.9	103.6	104.8	109.5	101.9
February	102.8	108.0	100.0	113.2	94.5	103.9	100.0	95.4	99.9	103.6	104.8	109.5	102.4
March	104.1	109.9	100.3	113.4	96.1	103.9	100.0	98.0	99.9	103.6	104.8	109.5	102.5
April	104.5	109.6	100.3	113.4	96.2	103.9	100.0	100.3	99.9	103.6	104.8	109.5	103.8
May	104.3	107.9	100.4	113.9	98.5	103.9	100.0	101.4	99.9	103.6	104.8	109.5	103.8
June	105.2	110.5	99.9	113.9	98.6	103.9	100.0	101.5	99.9	103.6	104.8	109.5	104.0
July	105.6	110.2	100.1	113.9	102.8	104.5	100.0	101.2	99.9	103.6	104.8	109.5	104.0
August	105.8	110.4	99.9	114.0	102.6	104.5	100.0	102.2	99.9	103.6	104.8	109.5	104.0
September	105.9	110.3	99.8	113.6	103.2	104.9	100.0	102.9	99.9	103.6	104.8	109.5	104.0
October	106.4	111.2	99.3	113.6	103.7	104.9	100.0	103.2	99.9	103.6	104.8	109.5	106.2
November	107.8	112.0	99.3	113.6	108.5	104.9	100.0	106.3	99.9	103.6	104.8	109.5	106.2
December	110.2	116.6	100.0	113.6	109.8	106.4	100.0	108.1	99.9	103.6	104.8	109.5	107.6

Year/month	All items	Food and non-alcoholic beverages	Alcoholic beverages, tobacco and kava	Clothing and footwear	Housing, water, electricity and gas	Furnishings, household equipment and household maintenance	Health	Transport	Communication	Recreation and culture	Education	Restaurants and hotels	Miscellaneous goods and services
2022													
January	109.9	114.8	99.6	113.8	115.9	106.7	100.0	106.5	99.9	103.6	104.8	109.5	107.8
February	112.1	119.3	99.9	113.8	115.9	107.0	100.0	107.7	99.9	103.6	104.8	111.9	109.1
March	112.3	117.8	100.1	113.8	116.7	107.1	100.0	112.1	99.9	103.6	104.8	111.9	109.1
April	114.3	119.6	100.1	113.8	116.7	109.1	100.0	118.9	99.9	103.6	104.8	114.7	110.4
May	116.0	120.4	100.6	115.0	121.0	109.3	100.0	123.3	99.9	103.6	104.8	114.7	112.0
June	117.1	121.2	101.3	115.0	121.4	109.5	100.0	127.3	99.9	103.6	104.8	114.7	112.1
July	119.4	121.4	103.1	115.9	134.7	109.5	100.0	129.9	99.9	103.6	104.8	117.6	112.4
August	120.4	123.8	102.9	116.2	137.9	109.6	110.7	127.2	99.9	103.6	104.8	121.6	112.9
September	120.8	125.4	102.9	116.2	138.3	109.6	119.7	123.9	99.9	103.6	104.8	126.1	114.1
October	120.4	124.2	102.9	115.4	139.4	109.6	119.7	122.9	102.3	103.6	104.8	126.1	114.1
November	119.8	122.1	103.2	115.4	139.2	110.5	119.7	124.0	102.3	103.6	104.8	127.2	114.4
December	120.4	123.1	103.4	115.7	141.5	110.8	119.7	123.5	102.3	103.6	104.8	127.2	115.1
2023													
January	120.6	127.0	102.8	115.7	131.3	110.6	119.7	121.1	102.3	103.6	114.3	127.2	114.9
February	121.8	130.4	102.4	115.0	131.3	111.2	119.7	120.2	102.3	103.6	114.3	127.2	116.5
March	122.9	132.5	103.3	113.7	131.4	111.8	119.7	120.9	102.3	103.6	114.3	127.2	116.8
April	122.2	132.0	103.4	114.3	125.9	111.5	119.7	120.3	102.3	103.6	114.3	133.1	116.5
May	123.6	134.5	103.1	119.5	127.0	111.5	119.7	120.0	102.3	111.4	114.3	140.8	116.1
June	125.7	137.1	103.2	123.9	128.0	113.4	119.7	124.9	102.3	111.4	114.3	140.8	115.9
July	124.9	136.0	104.0	124.4	125.7	113.5	119.7	123.4	102.3	111.4	114.3	140.8	116.3
August	123.9	132.6	104.4	124.2	125.1	115.7	119.7	125.0	102.3	111.4	114.3	140.8	116.4
September	124.5	132.3	104.4	124.4	124.6	116.7	119.7	129.1	102.3	111.4	114.3	140.8	117.9
Percentage change between September 2023 and August 2023.	0.5	-0.2	0.0	0.1	-0.3	0.9	0.0	3.3	0.0	0.0	0.0	0.0	1.3
Percentage change between September 2023 and September 2022.	3.1	5.5	1.4	7.1	-9.9	6.5	0.0	4.2	2.5	7.6	9.0	11.6	3.3

Table 4 Consumer Price Index and Inflation Rate, September 2023

Year	Month	Local	Import	All items	Monthly change for all items (%)	Annual inflation rate for period (%)	Average index for year	Average annual inflation rate (%)
2019	January	102.8	97.2	99.7	0.3	4.2	<u>100.0</u>	<u>4.0</u>
	February	103.7	96.8	99.9	0.1	3.2		
	March	104.3	97.1	100.4	0.5	2.0		
	April	99.9	97.7	98.7	-1.6	0.2		
	May	99.7	99.5	99.6	0.8	1.6		
	June	99.4	100.1	99.8	0.2	1.8		
	July	99.6	100.3	100.0	0.2	-0.5		
	August	99.6	101.1	100.5	0.5	-0.1		
	September	98.9	101.6	100.4	-0.1	0.4		
	October	99.8	101.8	100.9	0.5	0.2		
	November	99.7	101.0	100.4	-0.5	0.1		
	December	100.4	100.7	100.6	0.2	1.2		
2020	January	99.8	100.7	100.3	-0.3	0.6	<u>100.2</u>	<u>0.2</u>
	February	100.5	100.8	100.6	0.3	0.8		
	March	100.6	100.9	100.8	0.2	0.4		
	April	98.9	100.9	100.0	-0.8	1.3		
	May	99.6	99.7	99.6	-0.4	0.1		
	June	98.3	98.5	98.4	-1.2	-1.4		
	July	97.3	100.2	98.9	0.5	-1.1		
	August	96.3	100.9	98.8	-0.1	-1.6		
	September	97.4	101.1	99.4	0.6	-0.9		
	October	96.9	101.3	99.3	-0.1	-1.6		
	November	97.6	101.3	99.7	0.3	-0.8		
	December	99.7	101.9	100.9	1.3	0.3		
2021	January	100.4	102.6	101.6	0.7	1.3	<u>101.6</u>	<u>1.4</u>
	February	101.3	103.9	102.8	1.1	2.1		
	March	102.3	105.7	104.1	1.4	3.3		
	April	102.0	106.5	104.5	0.3	4.5		
	May	100.9	107.0	104.3	-0.2	4.7		
	June	102.0	107.9	105.2	0.9	6.9		
	July	102.9	107.8	105.6	0.3	6.8		
	August	102.7	108.3	105.8	0.2	7.0		
	September	102.5	108.7	105.9	0.1	6.5		
	October	103.0	109.3	106.4	0.5	7.2		
	November	103.9	111.0	107.8	1.3	8.2		
	December	107.5	112.5	110.2	2.3	9.3		

Table 5 Continuation of Table 4 Consumer Price Index and Inflation Rate, September 2023

Year	Month	Local	Import	All items	Monthly change for all items (%)	Annual inflation rate for period (%)	Average index for year	Average annual inflation rate (%)
2022	January	106.7	112.5	109.9	-0.3	8.2		
	February	110.7	113.2	112.1	2.0	9.1		
	March	109.3	114.7	112.3	0.2	7.8		
	April	110.2	117.7	114.3	1.8	9.4		
	May	111.5	119.7	116.0	1.5	11.3		
	June	112.1	121.1	117.1	0.9	11.2	<u>110.3</u>	<u>8.5</u>
	July	114.4	123.5	119.4	2.0	13.1		
	August	116.9	123.2	120.4	0.9	13.8		
	September	119.7	121.6	120.8	0.3	14.0		
	October	120.1	120.6	120.4	-0.3	13.1		
	November	119.0	120.5	119.8	-0.5	11.1		
	December	120.1	120.7	120.4	0.5	9.2	<u>116.9</u>	<u>10.9</u>
2023	January	120.9	120.4	120.6	0.2	9.7		
	February	122.2	121.5	121.8	1.0	8.7		
	March	123.3	122.6	122.9	0.9	9.4		
	April	121.3	122.9	122.2	-0.6	6.9		
	May	123.6	123.6	123.6	1.2	6.6		
	June	125.6	125.9	125.7	1.7	7.4	<u>121.5</u>	<u>10.3</u>
	July	123.9	125.8	124.9	-0.6	4.6		
	August	121.4	125.9	123.9	-0.8	2.9		
	September	121.2	127.1	124.5	0.5	3.1	<u>122.6</u>	<u>7.7</u>

Table 6 Consumer Price Index with local and imported components,
Percentage change from previous month, September 2023

	Weights (%)			September 2023			August 2023			% Change		
	Local	Import	Total	Local	Import	Total	Local	Import	Total	Local	Import	Total
A. Food and non-alcoholic beverages	15.2	24.6	39.8	141.6	126.5	132.3	142.2	126.7	132.6	-0.4%	-0.1%	-0.2%
Food	14.6	23.2	37.8	143.0	127.4	133.4	143.5	127.6	133.8	-0.4%	-0.1%	-0.3%
Non- alcoholic beverages	0.6	1.4	2.0	109.9	110.7	110.4	109.9	110.7	110.4	0.0%	0.0%	0.0%
B. Alcoholic beverages, tobacco and kava	6.7	4.9	11.6	94.1	118.5	104.4	94.1	118.5	104.4	0.0%	0.0%	0.0%
Alcoholic beverages	0.9	3.2	4.1	114.3	113.8	113.9	114.3	113.8	113.9	0.0%	0.0%	0.0%
Tobacco	4.1	1.7	5.8	111.3	127.4	116.0	111.3	127.4	116.0	0.0%	0.0%	0.0%
Kava	1.7	0.0	1.7	43.7	0.0	43.7	43.7	0.0	43.7	0.0%	-	0.0%
C. Clothing and footwear	0.4	1.7	2.1	118.9	125.5	124.4	118.9	125.3	124.2	0.0%	0.1%	0.1%
Clothing	0.4	1.5	1.8	118.9	125.8	124.5	118.9	125.8	124.5	0.0%	0.0%	0.0%
Footwear	0.0	0.3	0.3	0.0	123.7	123.7	0.0	122.7	122.7	-	0.9%	0.9%
D. Housing, water, electricity, gas and other fuels	7.2	3.6	10.8	110.6	152.9	124.6	110.3	154.7	125.1	0.3%	-1.2%	-0.3%
Maintenance and repair of the dwelling	0.2	1.8	2.0	193.4	200.7	199.9	184.0	204.6	202.3	5.1%	-1.9%	-1.2%
Water supply and miscellaneous services relating to the dwelling	2.0	0.0	2.0	108.1	0.0	108.1	108.1	0.0	108.1	0.0%	-	0.0%
Electricity, gas and other fuels	5.0	1.8	6.8	107.9	107.2	107.7	107.9	107.0	107.6	0.0%	0.1%	0.0%
E. Furnishings, household equipment and routine household maintenance	0.8	2.4	3.2	111.8	118.5	116.7	111.8	117.2	115.7	0.0%	1.2%	0.9%
Furniture and furnishings, carpets and other floor coverings	0.5	0.0	0.5	117.6	0.0	117.6	117.6	0.0	117.6	0.0%	-	0.0%
Household appliances	0.0	0.7	0.7	0.0	105.1	105.1	0.0	105.1	105.1	-	0.0%	0.0%
Tools and equipment for house and garden	0.0	0.2	0.2	0.0	115.6	115.6	0.0	115.6	115.6	-	0.0%	0.0%
Goods and services for routine household maintenance	0.3	1.5	1.8	102.3	125.0	120.9	102.3	122.8	119.2	0.0%	1.7%	1.5%
F. Health	0.2	0.2	0.3	141.4	100.0	119.7	141.4	100.0	119.7	0.0%	0.0%	0.0%
Medical products, appliances and equipment	0.0	0.2	0.2	0.0	100.0	100.0	0.0	100.0	100.0	-	0.0%	0.0%
Outpatient services	0.2	0.0	0.2	141.4	0.0	141.4	141.4	0.0	141.4	0.0%	-	0.0%
G. Transport	3.4	13.0	16.4	126.0	129.9	129.1	126.0	124.7	125.0	0.0%	4.1%	3.3%
Operation of personal transport equipment	1.3	9.9	11.2	122.2	126.0	125.6	122.2	119.2	119.6	0.0%	5.7%	5.0%
Transport services	2.2	3.1	5.3	128.3	142.4	136.6	128.3	142.4	136.6	0.0%	0.0%	0.0%
H. Communication	5.2	0.0	5.2	102.3	0.0	102.3	102.3	0.0	102.3	0.0%	-	0.0%
Telephone and telefax services	5.2	0.0	5.2	102.3	0.0	102.3	102.3	0.0	102.3	0.0%	-	0.0%
I. Recreation and culture	0.0	1.1	1.1	0.0	111.4	111.4	0.0	111.4	111.4	-	0.0%	0.0%
Newspapers, books and stationery	0.0	1.1	1.1	0.0	111.4	111.4	0.0	111.4	111.4	-	0.0%	0.0%
J. Education	2.2	0.0	2.2	114.3	0.0	114.3	114.3	0.0	114.3	0.0%	-	0.0%
Pre-primary and primary education	0.3	0.0	0.3	100.1	0.0	100.1	100.1	0.0	100.1	0.0%	-	0.0%
Secondary education	1.1	0.0	1.1	126.4	0.0	126.4	126.4	0.0	126.4	0.0%	-	0.0%
Tertiary education	0.8	0.0	0.8	103.9	0.0	103.9	103.9	0.0	103.9	0.0%	-	0.0%
K. Restaurants and hotels	3.1	0.0	3.1	140.8	0.0	140.8	140.8	0.0	140.8	0.0%	-	0.0%
Catering services	3.1	0.0	3.1	140.8	0.0	140.8	140.8	0.0	140.8	0.0%	-	0.0%
L. Miscellaneous goods and services	0.5	3.7	4.2	103.3	119.8	117.9	103.3	118.1	116.4	0.0%	1.4%	1.3%
Personal care	0.0	3.7	3.7	0.0	119.8	119.8	0.0	118.1	118.1	-	1.4%	1.4%
Financial services n.e.c.	0.1	0.0	0.1	100.0	0.0	100.0	100.0	0.0	100.0	0.0%	-	0.0%
Other Services n.e.c.	0.4	0.0	0.4	104.2	0.0	104.2	104.2	0.0	104.2	0.0%	-	0.0%
TOTAL	44.9	55.1	100	121.2	127.1	124.5	121.4	125.9	123.9	-0.1%	0.9%	0.5%

*Table 7 Consumer Price Index with local and imported components,
Percentage change from same month of previous year, September 2023*

	Weights			September 2023			September 2022			% Change		
	Local	Import	Total	Local	Import	Total	Local	Import	Total	Local	Import	Total
A. Food and non-alcoholic beverages	<u>15.2%</u>	<u>24.6%</u>	<u>39.8%</u>	<u>141.6</u>	<u>126.5</u>	<u>132.3</u>	<u>132.6</u>	<u>120.9</u>	<u>125.4</u>	<u>6.8</u>	<u>4.6</u>	<u>5.5</u>
Food	14.6%	23.2%	37.8%	143.0	127.4	133.4	134.0	121.9	126.5	6.7	4.5	5.4
Non- alcoholic beverages	0.6%	1.4%	2.0%	109.9	110.7	110.4	100.0	104.5	103.1	9.9	5.9	7.1
B. Alcoholic beverages, tobacco and kava	<u>6.7%</u>	<u>4.9%</u>	<u>11.6%</u>	<u>94.1</u>	<u>118.5</u>	<u>104.4</u>	<u>93.9</u>	<u>115.4</u>	<u>102.9</u>	<u>0.3</u>	<u>2.6</u>	<u>1.4</u>
Alcoholic beverages	0.9%	3.2%	4.1%	114.3	113.8	113.9	109.9	112.2	111.7	4.0	1.5	2.0
Tobacco	4.1%	1.7%	5.8%	111.3	127.4	116.0	110.0	121.7	113.4	1.2	4.7	2.3
Kava	1.7%	0.0%	1.7%	43.7	0.0	43.7	48.0	0.0	48.0	-9.0	-	-9.0
C. Clothing and footwear	<u>0.4%</u>	<u>1.7%</u>	<u>2.1%</u>	<u>118.9</u>	<u>125.5</u>	<u>124.4</u>	<u>118.9</u>	<u>115.6</u>	<u>116.2</u>	<u>0.0</u>	<u>8.6</u>	<u>7.1</u>
Clothing	0.4%	1.5%	1.8%	118.9	125.8	124.5	118.9	116.5	117.0	0.0	8.0	6.4
Footwear	0.0%	0.3%	0.3%	0.0	123.7	123.7	0.0	110.6	110.6	-	11.8	11.8
D. Housing, water, electricity, gas and other fuels	<u>7.2%</u>	<u>3.6%</u>	<u>10.8%</u>	<u>110.6</u>	<u>152.9</u>	<u>124.6</u>	<u>134.4</u>	<u>146.2</u>	<u>138.3</u>	<u>-17.7</u>	<u>4.6</u>	<u>-9.9</u>
Maintenance and repair of the dwelling	0.2%	1.8%	2.0%	193.4	200.7	199.9	166.2	176.8	175.6	16.4	13.5	13.8
Water supply and miscellaneous services relating to the dwelling	2.0%	0.0%	2.0%	108.1	0.0	108.1	108.1	0.0	108.1	0.0	-	0.0
Electricity, gas and other fuels	5.0%	1.8%	6.8%	107.9	107.2	107.7	143.7	116.8	136.5	-25.0	-8.3	-21.1
E. Furnishings, household equipment and routine household maintenance	<u>0.8%</u>	<u>2.4%</u>	<u>3.2%</u>	<u>111.8</u>	<u>118.5</u>	<u>116.7</u>	<u>108.1</u>	<u>110.2</u>	<u>109.6</u>	<u>3.4</u>	<u>7.6</u>	<u>6.5</u>
Furniture and furnishings, carpets and other floor coverings	0.5%	0.0%	0.5%	117.6	0.0	117.6	111.6	0.0	111.6	5.4	-	5.4
Household appliances	0.0%	0.7%	0.7%	0.0	105.1	105.1	0.0	101.2	101.2	-	3.9	3.9
Tools and equipment for house and garden	0.0%	0.2%	0.2%	0.0	115.6	115.6	0.0	111.0	111.0	-	4.1	4.1
Goods and services for routine household maintenance	0.3%	1.5%	1.8%	102.3	125.0	120.9	102.3	114.2	112.1	0.0	9.4	7.9
F. Health	<u>0.2%</u>	<u>0.2%</u>	<u>0.3%</u>	<u>141.4</u>	<u>100.0</u>	<u>119.7</u>	<u>141.4</u>	<u>100.0</u>	<u>119.7</u>	<u>0.0</u>	<u>0.0</u>	<u>0.0</u>
Medical products, appliances and equipment	0.0%	0.2%	0.2%	0.0	100.0	100.0	0.0	100.0	100.0	-	0.0	0.0
Outpatient services	0.2%	0.0%	0.2%	141.4	0.0	141.4	141.4	0.0	141.4	0.0	-	0.0
G. Transport	<u>3.4%</u>	<u>13.0%</u>	<u>16.4%</u>	<u>126.0</u>	<u>129.9</u>	<u>129.1</u>	<u>119.9</u>	<u>124.9</u>	<u>123.9</u>	<u>5.2</u>	<u>4.0</u>	<u>4.2</u>
Operation of personal transport equipment	1.3%	9.9%	11.2%	122.2	126.0	125.6	105.4	129.5	126.8	16.0	-2.7	-0.9
Transport services	2.2%	3.1%	5.3%	128.3	142.4	136.6	128.3	110.2	117.7	0.0	29.2	16.0
H. Communication	<u>5.2%</u>	<u>0.0%</u>	<u>5.2%</u>	<u>102.3</u>	<u>0.0</u>	<u>102.3</u>	<u>99.9</u>	<u>0.0</u>	<u>99.9</u>	<u>2.5</u>	<u>-</u>	<u>2.5</u>
Telephone and telefax services	5.2%	0.0%	5.2%	102.3	0.0	102.3	99.9	0.0	99.9	2.5	-	2.5
I. Recreation and culture	<u>0.0%</u>	<u>1.1%</u>	<u>1.1%</u>	<u>0.0</u>	<u>111.4</u>	<u>111.4</u>	<u>0.0</u>	<u>103.6</u>	<u>103.6</u>	<u>-</u>	<u>7.6</u>	<u>7.6</u>
Newspapers, books and stationery	0.0%	1.1%	1.1%	0.0	111.4	111.4	0.0	103.6	103.6	-	7.6	7.6
J. Education	<u>2.2%</u>	<u>0.0%</u>	<u>2.2%</u>	<u>114.3</u>	<u>0.0</u>	<u>114.3</u>	<u>104.8</u>	<u>0.0</u>	<u>104.8</u>	<u>9.0</u>	<u>-</u>	<u>9.0</u>
Pre-primary and primary education	0.3%	0.0%	0.3%	100.1	0.0	100.1	100.1	0.0	100.1	0.0	-	0.0
Secondary education	1.1%	0.0%	1.1%	126.4	0.0	126.4	107.0	0.0	107.0	18.0	-	18.0
Tertiary education	0.8%	0.0%	0.8%	103.9	0.0	103.9	103.9	0.0	103.9	0.0	-	0.0
K. Restaurants and hotels	<u>3.1%</u>	<u>0.0%</u>	<u>3.1%</u>	<u>140.8</u>	<u>0.0</u>	<u>140.8</u>	<u>126.1</u>	<u>0.0</u>	<u>126.1</u>	<u>11.6</u>	<u>-</u>	<u>11.6</u>
Catering services	3.1%	0.0%	3.1%	140.8	0.0	140.8	126.1	0.0	126.1	11.6	-	11.6
L. Miscellaneous goods and services	<u>0.5%</u>	<u>3.7%</u>	<u>4.2%</u>	<u>103.3</u>	<u>119.8</u>	<u>117.9</u>	<u>103.3</u>	<u>115.5</u>	<u>114.1</u>	<u>0.0</u>	<u>3.7</u>	<u>3.3</u>
Personal care	0.0%	3.7%	3.7%	0.0	119.8	119.8	0.0	115.5	115.5	-	3.7	3.7
Financial services n.e.c.	0.1%	0.0%	0.1%	100.0	0.0	100.0	100.0	0.0	100.0	0.0	-	0.0
Other Services n.e.c.	0.4%	0.0%	0.4%	104.2	0.0	104.2	104.2	0.0	104.2	0.0	-	0.0
TOTAL	<u>44.9%</u>	<u>55.1%</u>	<u>100%</u>	<u>121.2</u>	<u>127.1</u>	<u>124.5</u>	<u>119.7</u>	<u>121.6</u>	<u>120.8</u>	<u>1.3</u>	<u>4.5</u>	<u>3.1</u>

Table 8 Consumer Price Index: Groups and subgroups - index numbers, September 2023

	Annual													
	2022	Sep 22	Oct 22	Nov 22	Dec 22	Jan 23	Feb 23	Mar 23	Apr 23	May 23	Jun 23	Jul 23	Aug 23	Sep 23
A. Food and non-alcoholic beverages	121.1	125.4	124.2	122.1	123.1	127.0	130.4	132.5	132.0	134.5	137.1	136.0	132.6	132.3
Food	122.0	126.5	125.3	123.1	124.1	128.3	131.8	134.0	133.2	135.7	138.5	137.4	133.8	133.4
Non- alcoholic beverages	103.1	103.1	103.1	103.2	103.2	103.1	103.9	103.9	108.6	111.0	109.7	109.7	110.4	110.4
B. Alcoholic beverages, tobacco and kava	101.7	102.9	102.9	103.2	103.4	102.8	102.4	103.3	103.4	103.1	103.2	104.0	104.4	104.4
Alcoholic beverages	108.9	111.7	111.7	111.7	112.1	110.6	111.3	113.2	113.2	112.5	112.4	113.2	113.9	113.9
Tobacco	113.3	113.4	113.4	113.9	113.9	113.9	113.9	114.3	114.5	114.5	114.8	115.8	116.0	116.0
Kava	46.1	48.0	48.0	48.0	48.0	48.0	43.7	43.7	43.7	43.7	43.7	43.7	43.7	43.7
C. Clothing and footwear	115.0	116.2	115.4	115.4	115.7	115.7	115.0	113.7	114.3	119.5	123.9	124.4	124.2	124.4
Clothing	115.8	117.0	116.1	116.1	116.1	116.1	115.3	113.8	113.8	118.9	124.0	124.5	124.5	124.5
Footwear	110.0	110.6	110.6	110.6	113.2	113.2	113.2	113.2	117.8	123.5	123.5	123.5	122.7	123.7
D. Housing, water, electricity, gas and other fuels	128.2	138.3	139.4	139.2	141.5	131.3	131.3	131.4	125.9	127.0	128.0	125.7	125.1	124.6
Maintenance and repair of the dwelling	158.1	175.6	176.0	176.0	191.3	195.0	195.0	195.3	195.3	201.1	206.3	206.0	202.3	199.9
Water supply and miscellaneous services relating to the dwelling	108.1	108.1	108.1	108.1	108.1	108.1	108.1	108.1	108.1	108.1	108.1	108.1	108.1	108.1
Electricity, gas and other fuels	125.5	136.5	138.0	137.8	136.9	119.8	119.8	119.8	111.0	111.0	111.2	107.5	107.6	107.7
E. Furnishings, household equipment and routine household maintenance	109.0	109.6	109.6	110.5	110.8	110.6	111.2	111.8	111.5	111.5	113.4	113.5	115.7	116.7
Furniture and furnishings, carpets and other floor coverings	111.6	111.6	111.6	111.6	111.6	111.6	111.6	111.6	111.6	111.6	111.6	111.6	117.6	117.6
Household appliances	100.3	101.2	101.2	101.2	101.2	101.2	101.2	101.2	101.2	101.2	101.2	101.2	105.1	105.1
Tools and equipment for house and garden	108.9	111.0	111.0	114.1	112.6	112.6	112.6	112.6	112.6	112.6	115.6	115.6	115.6	115.6
Goods and services for routine household maintenance	111.6	112.1	112.1	113.3	114.0	113.7	114.7	115.7	115.2	115.3	118.3	118.5	119.2	120.9
F. Health	107.4	119.7	119.7	119.7	119.7	119.7	119.7	119.7	119.7	119.7	119.7	119.7	119.7	119.7
Medical products, appliances and equipment	100.0	100.0	100.0	100.0	100.0	100.0	100.0	100.0	100.0	100.0	100.0	100.0	100.0	100.0
Outpatient services	115.7	141.4	141.4	141.4	141.4	141.4	141.4	141.4	141.4	141.4	141.4	141.4	141.4	141.4
G. Transport	120.6	123.9	122.9	124.0	123.5	121.1	120.2	120.9	120.3	120.0	124.9	123.4	125.0	129.1
Operation of personal transport equipment	126.6	126.8	125.3	126.4	125.6	122.0	120.8	121.8	120.9	120.5	119.5	117.3	119.6	125.6
Transport services	107.8	117.7	117.7	119.1	119.1	119.1	119.1	119.1	119.1	119.1	136.6	136.6	136.6	136.6
H. Communication	100.5	99.9	102.3	102.3	102.3	102.3	102.3	102.3	102.3	102.3	102.3	102.3	102.3	102.3
Telephone and telefax services	100.5	99.9	102.3	102.3	102.3	102.3	102.3	102.3	102.3	102.3	102.3	102.3	102.3	102.3
I. Recreation and culture	103.6	103.6	103.6	103.6	103.6	103.6	103.6	103.6	103.6	111.4	111.4	111.4	111.4	111.4
Newspapers, books and stationery	103.6	103.6	103.6	103.6	103.6	103.6	103.6	103.6	103.6	111.4	111.4	111.4	111.4	111.4
J. Education	104.8	104.8	104.8	104.8	104.8	114.3	114.3	114.3	114.3	114.3	114.3	114.3	114.3	114.3
Pre-primary and primary education	100.1	100.1	100.1	100.1	100.1	100.1	100.1	100.1	100.1	100.1	100.1	100.1	100.1	100.1
Secondary education	107.0	107.0	107.0	107.0	107.0	126.4	126.4	126.4	126.4	126.4	126.4	126.4	126.4	126.4
Tertiary education	103.9	103.9	103.9	103.9	103.9	103.9	103.9	103.9	103.9	103.9	103.9	103.9	103.9	103.9
K. Restaurants and hotels	118.6	126.1	126.1	127.2	127.2	127.2	127.2	127.2	133.1	140.8	140.8	140.8	140.8	140.8
Catering services	118.6	126.1	126.1	127.2	127.2	127.2	127.2	127.2	133.1	140.8	140.8	140.8	140.8	140.8
L. Miscellaneous goods and services	112.0	114.1	114.1	114.4	115.1	114.9	116.5	116.8	116.5	116.1	115.9	116.3	116.4	117.9
Personal care	113.1	115.5	115.5	115.9	116.7	116.4	118.3	118.6	118.3	117.8	117.5	118.0	118.1	119.8
Financial services n.e.c.	100.0	100.0	100.0	100.0	100.0	100.0	100.0	100.0	100.0	100.0	100.0	100.0	100.0	100.0
Other Services n.e.c.	104.2	104.2	104.2	104.2	104.2	104.2	104.2	104.2	104.2	104.2	104.2	104.2	104.2	104.2
ALL GROUPS	116.9	120.8	120.4	119.8	120.4	120.6	121.8	122.9	122.2	123.6	125.7	124.9	123.9	124.5

Table 9 Monthly average price of selected local items, September 2023

		Annual			Monthly													
		Unit	2020	2021	2022	Sep 22	Oct 22	Nov 22	Dec 22	Jan 23	Feb 23	Mar 23	Apr 23	May 23	Jun 23	Jul 23	Aug 23	Sep 23
ROOT CROPS																		
1	Talo - Futuna	1 kg	1.48	1.75	2.08	1.88	2.15	1.98	2.34	2.04	2.05	2.37	2.02	2.09	2.32	2.09	2.16	2.16
2	Talo - Tonga	1kg	1.75	1.62	2.06	2.70	2.08	1.98	2.68	2.98	2.50	2.00	2.11	2.37	2.18	2.73	2.77	2.87
3	Manioke	1 kg	0.96	0.87	0.86	0.88	0.92	0.85	0.81	0.80	0.74	0.97	0.76	0.82	0.79	0.96	0.99	1.11
4	Kumala	1 kg	1.74	1.93	2.41	2.83	2.79	2.51	2.52	2.15	2.29	2.58	2.32	2.55	3.35	3.13	2.75	2.78
5	Yams; early	1 kg	5.29	6.63	13.31	13.73	13.17	10.69	13.25	14.42	12.74	8.75	10.67	15.99	18.46	20.29	21.05	17.04
6	Yams, late	1 kg	2.72	3.47	4.32	4.82	4.82	4.82	4.82	4.72	4.83	4.82	4.79	4.70	4.93	4.98	4.98	9.04
VEGETABLES																		
1	Lu	1 kg	5.28	5.57	7.94	11.24	10.34	6.45	4.62	6.61	15.38	5.54	5.43	5.31	5.35	6.07	6.86	5.80
2	Tomatoes	1 kg	8.70	11.60	11.34	5.78	3.48	6.01	8.65	15.68	16.47	22.88	22.62	24.32	19.18	13.21	5.94	6.02
3	H/Cabbage	1 kg	3.05	3.50	4.06	2.64	2.73	2.67	2.93	4.17	4.29	10.92	9.53	5.02	6.71	4.58	2.18	2.94
4	Carrots	1 kg	3.91	4.73	4.76	4.17	6.07	4.27	4.13	4.77	4.85	4.85	4.85	4.85	4.85	4.85	4.85	4.85
5	Capsicum	1 kg	12.88	14.60	22.20	17.37	14.47	8.99	11.35	12.24	14.72	37.06	31.24	32.24	42.63	34.48	21.46	17.89
MARINE AND ANIMAL PRODUCTS																		
1	Sausages	1 kg	8.47	8.85	9.27	9.36	9.43	9.50	9.57	9.93	11.04	11.04	11.11	11.11	10.93	10.79	10.79	10.93
2	Eggs	1 egg	17.58	19.31	23.45	24.47	24.97	27.47	27.47	27.47	27.97	26.63	26.63	27.13	28.20	28.40	28.90	28.90
3	Tuna	1 kg	16.55	18.90	21.92	22.00	22.00	25.00	25.00	25.00	19.00	19.00	21.76	20.00	22.00	22.00	22.00	22.25
4	Octopus	1 kg	18.00	24.20	25.92	23.00	30.46	32.76	43.21	45.36	33.17	27.57	23.47	23.74	30.04	27.29	26.31	25.61
5	Cockles (to'o)	1 kg	6.18	6.81	8.05	9.45	9.04	9.47	9.09	8.80	9.84	7.99	8.23	9.61	10.11	10.15	9.98	8.48
6	Stringed fish (Mixed)	1 kg	9.60	10.00	12.22	13.38	13.00	13.00	13.00	13.74	14.00	14.59	14.33	14.00	14.79	15.31	15.12	15.59
TOBACCO, ALCOHOL AND KAVA																		
1	Kava	1 kg	66.88	56.67	56.88	60.00	60.00	60.00	60.00	60.00	52.50	52.50	52.50	52.50	52.50	52.50	52.50	52.50

Table 10 Monthly average price of selected imported items, August 2023

		Annual			Monthly														Annual change %
	Unit	2020	2021	2022	Sept 22	Oct 22	Nov 22	Dec 22	Jan 23	Feb 23	Mar 23	Apr 23	May 23	Jun 23	Jul 23	Aug 23	Sept 23		
-	FOOD																		
	Fruits and Vegetables																		
1	Onions	1 kg	3.01	2.92	3.20	3.11	3.19	3.54	3.47	3.47	4.28	4.31	4.31	4.12	3.83	3.79	3.71	3.71	19.0%
2	Apples	1 kg	5.37	5.93	6.30	6.52	6.52	6.03	6.42	6.28	6.33	6.51	6.91	5.88	6.51	6.13	5.31	5.32	-18.5%
3	Oranges	1 kg	8.27	8.20	9.43	9.88	9.88	9.79	9.25	9.25	9.22	9.60	9.41	9.07	10.42	9.49	9.44	9.33	-5.6%
	Meats, Fish & Poultry																		
1	Mutton Flaps	1 kg	17.68	17.11	17.10	17.07	17.07	16.98	16.91	16.82	16.82	16.83	16.95	16.97	16.96	16.88	16.88	16.86	-1.2%
2	Chicken Legs	1 kg	3.37	3.95	4.85	5.63	5.41	4.92	4.61	4.52	4.72	5.04	5.12	5.27	5.46	5.48	5.33	5.24	-6.9%
3	Turkey tail	1 kg	9.15	12.28	13.42	12.91	12.61	12.49	12.49	12.72	12.35	12.51	12.51	12.34	12.12	12.41	11.42	11.42	-11.5%
-	Other Food																		
1	Flour	1 kg	1.86	1.95	2.16	2.28	2.32	2.41	2.40	2.38	2.59	2.63	2.63	2.72	2.66	2.73	2.75	2.69	18.2%
2	Sugar	1 kg	1.94	2.30	2.44	2.47	2.43	2.41	2.37	2.38	2.56	2.62	2.71	2.82	2.98	3.37	3.19	3.21	30.1%
	TOBACCO, ALCOHOL AND KAVA																		
	Tobacco																		
1	Pall Mall	Packet	21.61	23.11	23.23	23.29	23.29	23.29	23.29	23.29	23.29	23.29	23.43	23.43	23.57	24.29	24.43	24.43	4.9%
-	TRANSPORTATION																		
	Private Transportation																		
1	Petrol	litre	2.47	2.92	3.67	3.63	3.56	3.56	3.54	3.47	3.45	3.53	3.53	3.54	3.48	3.39	3.45	3.62	-0.3%
2	Diesel	litre	2.50	2.83	3.93	4.07	4.08	4.22	4.17	3.93	3.79	3.72	3.61	3.53	3.42	3.33	3.43	3.71	-8.9%

About the Consumer Price Index

The Monthly Consumer Price Index (CPI) published by the Statistics Department is accepted as the official measure of inflation in Tonga. The CPI measures the changing price of a fixed basket of goods and services purchased by Tongan households. The selection and relative importance of the goods and services in the CPI basket represents the overall expenditure pattern of Tongan households.

The CPI is used by ministries and other agencies for monitoring economic performance and by the National Reserve Bank of Tonga to help set monetary policy.

The new index reference period of September 2018 (=100.0) was first published for the month of October 2018. Data from the Household Income and Expenditure Survey (HIES) 2015-2016 was used to determine the expenditure pattern of consumers. The classification used for publication will change to the [COICOP](#) classification. The proportion of expenditure on each item or group is referred to the weight. The previous reference period was October 2010 based on the results of HIES 2009.

There are 156 items in the Tonga basket classified to twelve major groups. The items are further classified by whether they are imported or have been produced locally. The CPI covers price changes in Tongatapu and Vava'u. The pricing outlets selected in Tongatapu and Vava'u include the Talamahu and 'Utukalongalo market (agriculture produce), the Vuna Wharf (fresh fish), super-markets, village stores, petrol stations, restaurants, airlines etc.

The groups and their index reference period weights are shown in the table below.

Table 11 New vs old weights at the COICOP Division Level

Division Code	Division Description	New Weight (%)	Old Weight (%)
01	Food and non-alcoholic beverages	39.75	42.06
02	Alcoholic beverages, tobacco and narcotics	11.61	6.08
03	Clothing and footwear	2.08	3.98
04	Housing, water, electricity, gas and other fuels	10.84	12.56
05	Furnishings, household equipment and routine household maintenance	3.20	3.13
06	Health	0.33	0.58
07	Transport	16.41	11.93
08	Communication	5.16	5.40
09	Recreation and culture	1.06	1.48
10	Education	2.21	1.95
11	Restaurants and hotels	3.11	3.71
12	Miscellaneous goods and services	4.24	6.30
90	Non-consumption household expenditure		0.85
Grand Total		100.00%	100.00%

Further definitions

A **price index** measures the change in price between time periods for a given set of goods and services. It summarises a set of prices for a variety of goods and services collected from a number of outlets.

The **index reference period** is the benchmark to which prices in other periods are compared (e.g., if the index number in a later period is 115, prices have increased by 15.0 percent since the index reference period). Prices for later periods can also be compared in similar fashion.



Printed by TONGA STATISTICS DEPARTMENT
Nuku'alofa, TONGA—2023
