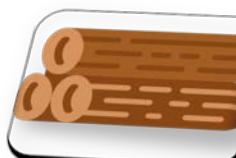




MANUFACTURING OUTPUT, EMPLOYMENT AND WAGES/SALARIES 2016/17



STATISTICS DEPARTMENT

Issued by: Statistics Department Government of Tonga
Nuku'alofa
TONGA

Phone: (676)23-300 / 23-913
Fax: (676)24-303

E-mail: dept@stats.gov.to

Web site: www.spc.int/prism/tonga/

December, 2017



PREFACE

This is the fourth Bulletin in the series on Manufacturing Output, Employment and Wages and Salaries, a result of the quarterly surveys conducted by the Department for the year of 2016/17. The survey results indicate the performance of the manufacturing industry in the Tongan Economy.

The bulletin is spread over three parts:

Part I: gives the introduction and main results of the comparative position and trend of manufacturing production, employment and wages and salaries.

Part II: has all the statistical tables showing growth and trend of manufacturing production, employment and wages/salaries.

Part III: gives the questionnaire used in the quarterly survey of manufacturing production, employment and wages/salaries and instructions for completing the questionnaire.

Staff of the Survey division of the Department is commended for their hard work in collecting the information present in this bulletin.

The Department is grateful to all manufacturing establishments which supplied the data and information published in this Bulletin and hope this will help them in some way. The Department welcomes any comments on how this bulletin could be improved.

Website: www.spc.int/prism/tonga/

Statistics Department
Government of Tonga
Nuku'alofa

Tonga

Telephone: (676) 23-300, 23-913

Fax: (676) 24-303

Email: dept@stats.gov.to


Mr. Viliami Fifita ★
Government Statistician



TABLE OF CONTENTS

	<u>Page No.</u>
Preface	i
List of Tables	ii
 Main results	
1. Introduction	1-2
2. Summary of Survey Results	3-7
3. Statistical tables	8-15
4. Appendices	16-19

PART II : STATISTICAL TABLES

<i>Table 1: Summary Table on Number of Operating Establishments by ISIC Divisions for 2016/17 by quarters</i>	8
<i>Table 2. Summary Table on Number of Operating Establishments by Island Divisions for 2016/17 by quarters</i>	8
<i>Table3. Summary Table on Number of Operating Establishments by Institutional Sectors for 2016/17 by quarters</i> ...	8
<i>Table 4: Manufacturing Productions by ISIC Divisions for 2016/17 by quarters</i>	9
<i>Table 5: Manufacturing Productions by Island Divisions for 2016/17 by quarters</i>	9
<i>Table 6: Manufacturing Productions by Institutional Sectors for 2016/17 by quarters</i>	9
<i>Table 7: Manufacturing Employments by ISIC Divisions for 2016/17 by quarters</i>	10
<i>Table 8: Manufacturing Employments by Island Divisions for 2016/17 by quarters</i>	10
<i>Table 9: Manufacturing Employments by Institutional Sectors for 2016/17 by quarters</i>	10
<i>Table 10: Manufacturing Wages and Salaries by ISIC Divisions for 2016/17 by quarters</i>	11
<i>Table 11: Manufacturing Wages and Salaries by Island Divisions for 2016/17 by quarters</i>	11
<i>Table 12: Manufacturing Wages and Salaries by Institutional Sectors for 2016/17 by quarters</i>	11
<i>Table 13: Manufacturing Production by ISIC Divisions and Annual % change of 2016/17</i>	12
<i>Table 14: Manufacturing Production by Island Division and Annual % change of 2016/17</i>	12
<i>Table 15: Manufacturing Production by Institutional Sector and Annual % change of 2016/17</i>	12
<i>Table 16: Manufacturing Employment by ISIC Divisions and Annual % change of 2016/17</i>	13
<i>Table 17: Manufacturing Employment by Island Divisions and Annual % change of 2016/17</i>	13
<i>Table 18: Manufacturing Employment by Institutional Sectors and Annual % change of 2016/17</i>	13
<i>Table 19: Manufacturing Wages and Salaries by ISIC Divisions and Annual % change of 2016/17</i>	14
<i>Table 20: Manufacturing Wages and Salaries by Island Divisions and Annual % change of 2016/17</i>	14
<i>Table 21: Manufacturing Wages and Salaries by Institutional Sectors and Annual % change of 2016/17</i>	14
<i>Table 22: Number of manufacturing production workers by ISIC Division for 2016/17</i>	15
<i>Table 23: Number of manufacturing production workers by Island Division for 2016/17</i>	15
<i>Table 24: Number of manufacturing production workers by Institutional Sector for 2016/17</i>	15

PART III : APPENDICES

Appendix 1 : Questionnaire used in the Quarterly Survey of Industrial Production, Employment and Wages and Salaries (English and Tongan)	16 - 17
Appendix 2 : Instruction for Completion the Questionnaire in Appendix 1 (English and Tongan)	18 - 19

Notes and abbreviation

Rounding

The sums of individual industries may not always come exactly to the totals shown, because of the effects of rounding. Discrepancies of 1 or 2 in the final digit should give no cause for concern.

ISIC International Standard Industrial Classification (Series M No.4, Rev.3)

INTRODUCTION

1. The Department launched a regular quarterly survey of Manufacturing Production, Employment and Wages and Salaries effective from July-September 1983 up to 2007. The survey covered all manufacturing establishments and units that were registered as manufacturing type, (i) under the Companies Act 1912, (ii) those granted Development License for manufacturing under the Industrial Incentives Act 1978 and (iii) those engaged in manufacturing activities with a license issued by the Ministry of Labour, Commerce and Industries.
2. Information was collected by personal visit of the survey staff of the Department to the manufacturing enterprises, establishments and units that were operational in the various quarters starting July – September 1983 and subsequent to the last quarter (October-December) of 2007. Manufacturing survey came to a stop from 2008 to 2013 due to staff constraint resulted in time series and trend break of information. In 2014 Manufacturing survey started again with the first report after the break in the manufacturing time series. *This is the Fourth Bulletin on Manufacturing Output, Employment and Wages and Salaries contains data for year 2016/17 published by the Department in December 2017.*
3. An establishment was treated as manufacturing if it was engaged in the transformation (mechanical or chemical) of substances into new products whether by machines or by hand in a factory or other business premises. An establishment/unit engaged in the assembly of component parts of manufactured products was treated as engaged in manufacturing except where it undertook construction activity.
4. The survey did not cover enterprises, establishments and units that were engaged in (a) repair and maintenance of vehicles, machinery and equipment; (b) canning, preserving and processing of fish and fisheries products; and (c) household type of activities related to making handicrafts and the like.
5. The questionnaire used for collecting the data from the said manufacturing enterprises and units is given as Appendix 1. Instructions for completing the questionnaire will be found in Appendix 2. However the definitions used for manufacturing businesses for the survey in question were:

Enterprises: A single business entity, Private, Government, Quasi-government and Co-operative operating in Tonga as a legally constituted body such as a company, partnership, co-operative and also sole ownership, engaged in manufacturing type of activities is treated as an enterprise. There are generally two types of enterprises viz.:

- i. "Single Establishment Enterprise" consisting of only one establishment and

- ii. "Multiple Establishments Enterprise" consisting of more than one establishment with or without ancillary unit or one establishment plus one or more ancillary units.

Establishment: a separate operating unit (factory, store, workshop or other place, etc.) engaged in Tonga in one or predominantly one kind of economic activity at a single physical location.

6. Manufacturing establishments have been classified into Divisions according to the International Standard Industrial Classification (ISIC) Series M No. 4, Rev.3 for Major Divisions 15-37, Manufacturing Industries.

THE FOLLOWING ISIC DIVISIONS HAVE BEEN USED:

DIVISION:

15. Manufacture of food products and beverages (bread, sausages, soft drinks and ice-cream etc.)
16. Manufacture of Tobacco Products. (Cigarettes)
17. Manufacture of textiles (t-shirt, pullovers and quilts etc.)
18. Manufacture of wearing apparel; dressing and drying of fur (dress, trousers, lavalava etc.)
19. Tanning and dressing of leather; manufacture of luggage, handbags, saddlery, harness and footwear
20. Manufacture of wood and of products of wood and cork, except furniture; manufacture of articles of straw and plaiting materials
21. Manufacture of Pulp, paper or corrugated, paperboard and articles of paper
22. Publishing, printing and reproduction of recorded media
24. Manufacture of chemicals and chemical products (tablets, paint and varnish etc.)
26. Manufacture of other non-metallic mineral products (concrete blocks and water tanks etc.)
28. Manufacture of Fabricated Metal Products
29. Manufacture of electrical machinery and apparatus
30. Manufacture of radio, television and communication equipment and apparatus
31. Manufacture of medical, precision and optical instruments, watches and clocks
35. Manufacture of other transport equipment (boat, cart, bicycle etc.)
36. Manufacture of furniture
37. Recycling and other manufacture industries n.e.c.

SUMMARY OF SURVEY RESULTS

The quarterly survey of manufacturing output, employment and wages/salaries for fiscal year 2016/17 was carried out by the Statistics Department of Tonga between 2016 and 2017. The survey collects information on production, employment and wages/salaries, which showed that there were 83 establishments in operation with a production of T\$49.9 million. A total of 650 persons were employed in manufacturing along with T\$7.4 million of wages and salaries. *Table 1 below gives a summary of the survey.*

Table 1. A complete summary of the survey results for 2016/17 by Quarters:

Item	Unit	2016				2017		2016/17	2016
		Mar	Jun	Sept	Dec	Mar	Jun	Annual	
1. Establishments covered	No.	79	84	84	81	83	85	83	82
2. Total production	T\$('000)	9,549	11,947	11,516	12,936	12,755	12,703	49,910	45,947
3. Persons employed	No.	586	557	567	629	694	708	650	585
4. Wages and salaries	T\$('000)	1,782	1,393	1,767	1,923	1,936	1,731	7,357	6,865

Source: Manufacturing survey, Statistics Dept

MANUFACTURING OUTPUT

The survey showed that the total value of manufacturing output at end of 2016/17 was T\$49.9 million of which Food Products and Beverages Industries held the biggest share of T\$18.3 million (37%) of total output. Non-metallic Mineral Products followed with T\$11.8 million (24%), Manufacture of Fabricated Metal Products with T\$3.4 million (7%), Chemicals and Chemical Products with T\$2.4 million (5%), Manufacture of furniture with T\$1.7 million (3%) and the remaining T\$12.4 million (25%) was shared among Recycling and Other Manufacture Industries.

Production level and its share by ISIC Division

ISIC Div.	Description	2016				2017		2016/17	2016
		Mar	Jun	Sept	Dec	Mar	Jun	Annual	
15	Food Products and Beverages	3,437	3,687	4,246	4,434	4,614	5,039	18,332	15,803
22	Publishing and Printing	601	191	210	166	242	186	804	1,169
24	Chemicals and Chemical Products	465	649	695	661	523	519	2,398	2,470
26	Non-metallic Mineral Products	1,807	2,924	2,264	2,331	4,181	3,008	11,784	9,326
28	Fabricated Metal Products	600	1,454	716	792	922	923	3,353	3,562
36	Manufacture of Furniture	358	396	521	375	328	466	1,691	1,651
37	Recycling and Other Manufacturing Industries	2,280	2,646	2,864	4,176	1,945	2,561	11,546	11,966
All Manufacturing		9,549	11,947	11,516	12,936	12,755	12,703	49,910	45,947

Source: Manufacturing survey, Statistics Dept. Note: ISIC 37 includes 16,17,18, 19, 20, 21, 25, 29, 30, 31, and 35.

9. The Divisional contribution in Manufacturing Output showed that Tongatapu division dominated the production by T\$42.4 (85%), while Vava'u, Ha'apai and 'Eua divisions contributed the remaining T\$7.5 million (15%).

Production level and its share by Island Division		T\$(‘000)							
		2016				2017		2016/17	2016
Div.	Island	Mar	Jun	Sept	Dec	Mar	Jun	Annual	
1	Tongatapu	7,560	9,725	9,464	11,057	10,934	10,915	42,370	37,806
2	Vava'u	1,802	2,044	1,752	1,755	1,503	1,509	6,519	7,353
3	Ha'apai and 'Eua	186	179	300	124	318	279	1,021	788
All Manufacturing		9,549	11,947	11,516	12,936	12,755	12,703	49,910	45,947

Source: Manufacturing survey, Statistics Dept

10. The contribution by Institutional Sector to Manufacturing Output was noted as given in the table hereunder; it will be seen that the Private Sector contributed T\$48.0 million (96%) as the highest and the Government and Quasi-Government Sectors T\$1.9million (4%).

Production level and its share by Institutional Sector		T\$(‘000)							
		2016				2017		2016/17	2016
Institutional	Sector	Mar	Jun	Sept	Dec	Mar	Jun	Annual	
01	Private Sector	8,725	11,502	11,034	12,474	12,290	12,238	48,036	43,735
02	Government and Quasi-Government Sectors	824	445	481	462	465	466	1,874	2,213
All Manufacturing		9,549	11,947	11,516	12,936	12,755	12,703	49,910	45,947

Source: Manufacturing survey, Statistics Dept

Manufacturing Employment

11. The level of employment carried by each Industrial division at end of 2016/17 by Quarters is given below:

Employment level and its share by ISIC Division

ISIC Div.	Description	2016		2017		Number			
		Mar	Jun	Sept	Dec	2016/17	2016		
15	Food Products and Beverages	241	227	208	278	311	319	279	239
22	Publishing and Printing	33	33	34	33	33	33	33	33
24	Chemicals and Chemical Products	13	13	9	12	10	10	10	12
26	Non-metallic Mineral Products	113	93	109	107	162	157	134	106
28	Fabricated Metal Products	9	9	9	9	9	9	9	9
36	Manufacture of Furniture	37	39	50	46	31	36	41	43
37	Recycling and Other Manufacturing Industries	140	143	148	144	138	144	144	144
All Manufacturing		586	557	567	629	694	708	650	586

Source: Manufacturing survey, Statistics Dept. Note: ISIC 37 includes 16,17,18, 19, 20, 21, 25, 29, 30, 31, and 35.

12. The survey showed that the share of employment in 2016/17 commanded by Food Products and Beverages Industries held the highest number of 279 in employment (43%), followed by Non-metallic Mineral Industries with 134 in employment (21%), Furniture Industries 41 in employment (6%), Publishing and Printing 33 in employment (5%) and the remaining 163 in employment (25%) distributed among Other Industries not mentioned above.

13. By Division, Tongatapu division employed 553 of the total employment (85%), Vava'u division employed 58 (9%), Ha'apai and 'Eua divisions employed 39 (6%) of the total employment.

Employment level and its share by Island Divisions

Div.	Island	2016		2017		Number			
		Mar	Jun	Sept	Dec	2016/17	2016		
1	Tongatapu	500	476	448	538	611	614	553	491
2	Vava'u	60	56	74	71	43	42	58	65
3	Ha'apai and 'Eua	26	25	45	20	39	52	39	29
All Manufacturing		586	557	567	629	694	708	650	585

Source: Manufacturing survey, Statistics Dept

14. The employment position at the Sectoral level indicated that the Private Sector had 548 employments (84%), while the Government and Quasi-Government Sectors employed 102 (16%). The level of employment carried by each institutional Sector at end of 2016 /17 is given below:

Employment level and its share by Institutional Sector

Insti tutio nal	Sector	2016		2017		Number			
		Mar	Jun	Sept	Dec	2016/17	2016		
01	Private Sector	484	455	463	530	596	604	548	483
02	Government and Quasi-Government Sectors	102	102	104	99	98	104	102	102
All Manufacturing		586	557	567	629	694	708	650	585

Source: Manufacturing survey, Statistics Dept

Manufacturing Wages/Salaries

15. The level of wages and salaries paid by each Industrial Division at end of 2016/17 by Quarters is given below:

Wages and Salaries level and its share by ISIC Division

ISIC Div.	Description	2016		2017		T\$('000)			
		Mar	Jun	Sept	Dec	2016/17	2016		
15	Food Products and Beverages	686	419	660	822	820	564	2,866	2,587
22	Publishing and Printing	77	82	89	85	105	66	345	333
24	Chemicals and Chemical Products	71	72	64	72	67	66	269	279
26	Non-metallic Mineral Products	329	224	320	308	378	378	1,384	1,180
28	Fabricated Metal Products	61	61	61	61	29	30	181	243
36	Manufacture of Furniture	123	88	110	101	79	92	382	423
37	Recycling and Other Manufacturing Industries	435	447	463	474	458	535	1,930	1,820
All Manufacturing		1,782	1,393	1,767	1,923	1,936	1,731	7,357	6,865

Source: Manufacturing survey, Statistics Dept. Note: ISIC 37 includes 16, 17,18,19, 21, 25, 29, 30, 31, and 35.

16. The above table shows that the share of wages and salaries paid to employment carried by various divisions at end of 2016/17 were: Food Products and Beverages Industries took the highest share of payments T\$2.8 million (39%), followed by Non-metallic Mineral Products Industries with T\$1.4 million (19%), Manufacture of Furniture Industries and Publishing and Printing Industries contributed share of T\$0.4 million each (5%), and all Other Industries with T\$2.4 million (32%).

17. The level of wages and salaries carried by each Island Division at end of 2016/17 is given below:

Wages and Salaries level and its share by Island Division		T\$('000)							
		2016				2017		2016/17	2016
Div.	Island	Mar	Jun	Sept	Dec	Mar	Jun	Annual	
1	Tongatapu	1,646	1,270	1,586	1,752	1,834	1,631	6,803	6,255
2	Vava'u	113	112	153	157	75	71	456	536
3	Ha'apai and 'Eua	23	10	28	13	28	29	98	74
All Manufacturing		1,782	1,393	1,767	1,923	1,936	1,731	7,357	6,865

Source: Manufacturing survey, Statistics Dept

18. Tongatapu division also took the highest share of payments to employment which amounted to T\$6.8 million (93%), followed by Vava'u division T\$0.5 million (6%), Ha'apai and 'Eua divisions took the remaining T\$0.01 million (1%).

19. The level of wages and salaries carried by each Institutional Sector at end of 2016/17 is given below:

Wages and Salaries level and its share by Institutional Sector		T\$('000)							
		2016				2017		2016/17	2016
Institutional	Sector	Mar	Jun	Sept	Dec	Mar	Jun	Annual	
01	Private Sector	1,493	1,099	1,473	1,614	1,628	1,422	6,137	5,679
02	Government and Quasi-Government Sectors	289	293	294	309	309	309	1,221	1,186
All Manufacturing		1,782	1,393	1,767	1,923	1,936	1,731	7,357	6,865

Source: Manufacturing survey, Statistics Dept

20. At the sectoral level, the Private Sector's share was the highest T\$6.1 million (83%), followed by Government and Quasi-Government Sector which shared the remaining T\$1.2 million (17%).

STATISTICAL TABLES

Table 1: Summary Table on Number of Operating Establishments by ISIC Divisions for 2016/17 by quarters

ISIC Div.	Description	2016		2017		Number		2016	
		Mar	Jun	Sept	Dec	Mar	Jun		2016/17 Annual
15	Food Products and Beverages	38	39	39	39	38	39	39	
22	Publishing and Printing	3	3	3	4	3	3	3	
24	Chemicals and Chemical Products	3	3	3	4	3	3	3	
26	Non-metallic Mineral Products	13	14	14	11	14	15	14	
28	Fabricated Metal Products	3	3	3	3	3	3	3	
36	Manufacture of Furniture	7	7	7	7	7	7	7	
37	Recycling and Other Manufacturing Industries	15	15	15	13	15	15	15	
All Manufacturing		82	84	84	81	83	85	83	83

Source: Manufacturing survey, Statistics Dept. Note: ISIC 37 includes 16, 17, 18, 19, 20, 21, 25, 29, 30, 31, and 35.

Table 2. Summary Table on Number of Operating Establishments by Island Divisions for 2016/17 by quarters

Div.	Island	2016		2017		Number		2016	
		Mar	Jun	Sept	Dec	Mar	Jun		2016/17 Annual
1	Tongatapu	52	53	52	53	52	53	53	
2	Vava'u	18	19	20	18	19	20	19	
3	Ha'apai and 'Eua	12	12	12	10	12	12	12	
All Manufacturing		82	84	84	81	83	85	83	83

Source: Manufacturing survey, Statistics Dept

Table 3. Summary Table on Number of Operating Establishments by Institutional Sectors for 2016/17 by quarters

Institutional	Sector	2016		2017		Number		2016	
		Mar	Jun	Sept	Dec	Mar	Jun		2016/17 Annual
01	Private Sector	78	80	80	77	79	81	79	
02	Government and Quasi-Government Sectors	4	4	4	4	4	4	4	
All Manufacturing		82	84	84	81	83	85	83	83

Source: Manufacturing survey, Statistics Dept

Table 4: Manufacturing Productions by ISIC Divisions for 2016/17 by quarters

T\$('000)

ISIC Div.	Description	2016				2017		2016/17	2016
		Mar	Jun	Sept	Dec	Mar	Jun	Annual	
15	Food Products and Beverages	3,437	3,687	4,246	4,434	4,614	5,039	18,333	15,803
18	Manufacture of Wearing Apparel	116	191	142	94	97	103	436	543
20	Wood and Products of Wood	353	350	419	411	401	404	1,635	1,533
22	Publishing and Printing	601	191	210	166	242	186	804	1,169
24	Chemicals and Chemical Products	465	649	695	661	523	519	2,398	2,470
26	Non-metallic Mineral Products	1,807	2,924	2,264	2,331	4,181	3,008	11,784	9,326
28	Fabricated Metal Products	600	1,454	716	792	922	923	3,353	3,562
36	Manufacture of Furniture	358	396	521	375	328	466	1,691	1,651
37	Recycling and Other Manufacturing Industries	1,811	2,105	2,269	3,671	1,447	2,054	9,476	9,889
All Manufacturing		9,548	11,947	11,516	12,936	12,755	12,703	49,910	45,947

Source: Manufacturing survey, Statistics Dept. Note: ISIC 37 includes 16, 17, 19, 21, 25, 29, 30, 31, and 35.

Table 5: Manufacturing Productions by Island Divisions for 2016/17 by quarters

T\$('000)

Div.	Island	2016				2017		2016/17	2016
		Mar	Jun	Sept	Dec	Mar	Jun	Annual	
1	Tongatapu	7,560	9,725	9,464	11,057	10,934	10,915	42,370	37,806
2	Vava'u	1,802	2,044	1,752	1,755	1,503	1,509	6,519	7,353
3	Ha'apai and 'Eua	186	179	300	124	318	279	1,021	789
All Manufacturing		9,548	11,947	11,516	12,936	12,755	12,703	49,910	45,947

Source: Manufacturing survey, Statistics Dept

Table 6: Manufacturing Productions by Institutional Sectors for 2016/17 by quarters

T\$('000)

Inst.	Sector	2016				2017		2016/17	2016
		Mar	Jun	Sept	Dec	Mar	Jun	Annual	
01	Private Sector	8,725	11,502	11,034	12,474	12,290	12,237	48,036	43,735
02	Government and Quasi-Government Sectors	824	445	481	462	465	466	1,874	2,213
All Manufacturing		9,548	11,947	11,516	12,936	12,755	12,703	49,910	45,947

Source: Manufacturing survey, Statistics Dept

Table 7: Manufacturing Employments by ISIC Divisions for 2016/17 by quarters

		2016				2017		2016/17	2016
ISIC Div.	Description	Mar	Jun	Sept	Dec	Mar	Jun	Annual	
15	Food Products and Beverages	241	227	208	278	311	319	279	239
18	Manufacture of Wearing Apparel	18	22	23	24	26	27	25	22
20	Wood and Products of Wood	89	87	89	86	85	91	88	88
22	Publishing and Printing	33	33	34	33	33	33	33	33
24	Chemicals and Chemical Products	13	13	9	12	10	10	10	12
26	Non-metallic Mineral Products	113	93	109	107	162	157	134	106
28	Fabricated Metal Products	9	9	9	9	9	9	9	9
36	Manufacture of Furniture	37	39	50	46	31	36	41	43
37	Recycling and Other Manufacturing Industries	33	34	36	34	27	26	31	34
All Manufacturing		586	557	567	629	694	708	650	585

Source: Manufacturing survey, Statistics Dept. Note: ISIC 37 includes 16,17, 19, 21, 25, 29, 30, 31, and 35.

Table 8: Manufacturing Employments by Island Divisions for 2016/17 by quarters

		2016				2017		2016/17	2016
Div.	Island	Mar	Jun	Sept	Dec	Mar	Jun	Annual	
1	Tongatapu	500	476	448	538	612	614	553	491
2	Vava'u	60	56	74	71	43	42	58	65
3	Ha'apai and 'Eua	26	25	45	20	39	52	39	29
All Manufacturing		586	557	567	629	694	708	650	585

Source: Manufacturing survey, Statistics Dept

Table 9: Manufacturing Employments by Institutional Sectors for 2016/17 by quarters

		2016				2017		2016/17	2016
Inst.	Sector	Mar	Jun	Sept	Dec	Mar	Jun	Annual	
01	Private Sector	484	455	463	530	596	604	548	483
02	Government and Quasi-Government Sectors	102	102	104	99	98	104	102	102
All Manufacturing		586	557	567	629	694	708	650	585

Source: Manufacturing survey, Statistics Dept

Table 10: Manufacturing Wages and Salaries by ISIC Divisions for 2016/17 by quarters

T\$('000)

ISIC Div.	Description	2016				2017		2016/17	2016
		Mar	Jun	Sept	Dec	Mar	Jun	Annual	
15	Food Products and Beverages	686	419	660	822	820	564	2,866	2,587
18	Manufacture of Wearing Apparel	49	60	69	51	63	64	247	228
20	Wood and Products of Wood	279	278	280	289	289	289	1,146	1,125
22	Publishing and Printing	77	82	89	85	105	66	345	333
24	Chemicals and Chemical Products	71	72	64	72	67	66	268	2789
26	Non-metallic Mineral Products	329	224	320	308	378	378	1,383	1,180
28	Fabricated Metal Products	61	61	61	61	29	30	181	243
36	Manufacture of Furniture	123	88	110	101	79	92	383	423
37	Recycling and Other Manufacturing Industries	107	110	115	135	106	182	538	466
All Manufacturing		1,782	1,393	1,767	1,923	1,936	1,731	7,357	6,865

Source: Manufacturing survey, Statistics Dept. Note: ISIC 37 includes 16, 17, 19, 21, 25, 29, 30, 31, and 35.

Table 11: Manufacturing Wages and Salaries by Island Divisions for 2016/17 by quarters

T\$('000)

Div.	Island	2016				2017		2016/17	2016
		Mar	Jun	Sept	Dec	Mar	Jun	Annual	
1	Tongatapu	1,646	1,270	1,586	1,752	1,834	1,631	6,803	6,255
2	Vava'u	113	112	153	157	75	71	456	536
3	Ha'apai and 'Eua	23	10	28	13	28	29	98	74
All Manufacturing		1,782	1,392	1,767	1,923	1,936	1,731	7,357	6,865

Source: Manufacturing survey, Statistics Dept

Table 12: Manufacturing Wages and Salaries by Institutional Sectors for 2016/17 by quarters

T\$('000)

Inst.	Sector	2016				2017		2016/17	2016
		Mar	Jun	Sept	Dec	Mar	Jun	Annual	
01	Private Sector	1,493	1,099	1,473	1,614	1,628	1,422	6,136	5,679
02	Government and Quasi-Government Sectors	289	293	294	309	309	309	1,221	1,186
All Manufacturing		1,782	1,393	1,767	1,923	1,936	1,731	7,357	6,865

Source: Manufacturing survey, Statistics Dept

Table 13: Manufacturing Production by ISIC Divisions and Annual % change of 2016/17

ISIC Div.	Description	2015/16 (T\$)	%	2016/17 (T\$)	%	Annual % Change 2016/17
15	Food Products and Beverages	14,367,905	36.40	18,332,701	36.73	27.59
18	Manufacture of Wearing Apparel	603,088	1.53	436,443	0.87	-27.63
20	Wood and Products of Wood	660,496	4.21	1,635,031	3.28	-1.53
22	Publishing and Printing	1,206,177	3.06	804,442	1.61	-33.31
24	Chemicals and Chemical Products	2,769,598	7.02	2,398,189	4.81	-13.41
26	Non-metallic Mineral Products	7,412,568	18.78	11,784,317	23.61	58.98
28	Fabricated Metal Products	2,866,788	7.26	3,352,952	6.72	16.96
36	Manufacture of Furniture	1,548,756	3.92	1,690,579	3.39	9.16
37	Recycling and Other Manufacturing Industries	7,041,948	17.84	9,475,112	18.98	34.55
All Manufacturing		39,477,324	100.00	49,909,767	100.00	26.43

Source: Manufacturing survey, Statistics Dept

Table 14: Manufacturing Production by Island Division and Annual % change of 2016/17

Island Division		2015/16 (T\$)	%	2016/17 (T\$)	%	Annual % Change 2016/17
01	Tongatapu Division	32,913,600	83.37	42,369,841	84.89	28.73
02	Vava'u Division	5,865,724	14.86	6,519,072	13.06	11.14
03	Ha'apai & 'Eua Division	698,000	1.77	1,020,853	2.05	46.25
All Manufacturing		39,477,324	100.00	49,909,767	100.00	26.43

Source: Manufacturing survey, Statistics Dept

Table 15: Manufacturing Production by Institutional Sector and Annual % change of 2016/17

Institutional Sector		2015/16 (T\$)	%	2016/17 (T\$)	%	Annual % Change 2016/17
01	Private Sector	37,113,924	94.01	48,036,016	95.18	29.43
02	Government and Quasi Government Sector	2,363,400	5.99	18,73,751	4.82	-20.72
All Manufacturing		39,477,324	100.00	49,909,767	100.00	26.43

Source: Manufacturing survey, Statistics Dept

Table 16: Manufacturing Employment by ISIC Divisions and Annual % change of 2016/17

ISIC Div.	Description	2015/16 (No.)	%	2016/17 (No.)	%	Annual % Change 2016/17
15	Food Products and Beverages	235	41.5	279	43.0	18.6
18	Manufacture of Wearing Apparel	22	3.9	25	3.9	13.6
20	Wood and Products of Wood	88	15.4	88	13.5	0.3
22	Publishing and Printing	30	5.2	33	5.1	12.7
24	Chemicals and Chemical Products	13	2.3	10	1.6	-22.6
26	Non-metallic Mineral Products	97	17.1	134	20.6	37.9
28	Fabricated Metal Products	9	1.6	9	1.4	0.0
36	Manufacture of Furniture	45	8.0	41	6.3	-9.9
37	Recycling and Other Manufacturing Industries	39	6.9	38	5.8	-2.6
All Manufacturing		567	100.00	650	100.00	14.5

Source: Manufacturing survey, Statistics Dept

Table 17: Manufacturing Employment by Island Divisions and Annual % change of 2016/17

Island Division		2015/16 (No.)	%	2016/17 (No.)	%	Annual % Change 2016/17
01	Tongatapu Division	486	85.7	553	83.9	13.7
02	Vava'u Division	60	10.5	58	11.2	-3.8
03	Ha'apai & 'Eua Division	22	3.8	39	5.0	81.4
All Manufacturing		567	100.0	650	100.0	14.5

Source: Manufacturing survey, Statistics Dept

Table 18: Manufacturing Employment by Institutional Sectors and Annual % change of 2016/17

Institutional Sector		2015/16 (No.)	%	2016/17 (No.)	%	Annual % Change 2016/17
01	Private Sector	469	82.6	548	84.4	16.9
02	Government and Quasi Government Sector	99	17.4	101	15.6	2.8
All Manufacturing		568	100.0	650	100.0	14.5

Source: Manufacturing survey, Statistics Dept

Table 19: Manufacturing Wages and Salaries by ISIC Divisions and Annual % change of 2016/17

ISIC Div.	Description	2015/16 (T\$)	%	2016/17 (T\$)	%	Annual % Change 2016/17
15	Food Products and Beverages	2,464,880	39.4	2,866,089	39.0	16.3
18	Manufacture of Wearing Apparel	226,681	3.6	247,064	3.36	9.0
20	Wood and Products of Wood	1,126,904	18.0	1,146,124	15.58	1.7
22	Publishing and Printing	316,529	5.0	344,765	4.69	8.9
24	Chemicals and Chemical Products	275,828	4.4	268,419	3.65	-2.7
26	Non-metallic Mineral Products	944,584	15.1	1,383,193	18.80	46.4
28	Fabricated Metal Products	121,740	2.0	180,834	2.46	48.5
36	Manufacture of Furniture	390,776	6.3	382,878	5.20	-2.0
37	Recycling and Other Manufacturing Industries	385,690	6.2	538,342	7.32	39.6
All Manufacturing		6,253,612	100.0	7,357,708	100.0	17.7

Source: Manufacturing survey, Statistics Dept

Table 20: Manufacturing Wages and Salaries by Island Divisions and Annual % change of 2016/17

Island Division		2015/16 (T\$)	%	2016/17 (T\$)	%	Annual % Change 2016/17
01	Tongatapu Division	5,763,621	92.1	6,803,240	92.5	18.0
02	Vava'u Division	435,740	7.0	456,666	6.2	4.8
03	Ha'apai & 'Eua Division	54,250	0.9	97,800	1.3	80.3
All Manufacturing		6,253,611	100.0	7,357,708	100.0	17.7

Source: Manufacturing survey, Statistics Dept

Table 21: Manufacturing Wages and Salaries by Institutional Sectors and Annual % change of 2016/17

Institutional Sector		2015/16 (T\$)	%	2016/17 (T\$)	%	Annual % Change 2016/17
01	Private Sector	5,073,697	81.1	6,137,128	83.4	21.0
02	Government and Quasi Government Sector	1,179,915	18.9	1,220,579	16.6	3.4
All Manufacturing		6,253,612	100.0	7,357,707	100.0	17.7

Source: Manufacturing survey, Statistics Dept

Table 22: Number of manufacturing production workers by ISIC Division for 2016/17

ISIC Div.	Description	2015/16 (No.)	%	2016/17 (No.)	%	Annual % Change 2016/17
15	Food Products and Beverages	711	39.5	857	40.4	20.5
18	Manufacture of Wearing Apparel	60	3.3	68	3.2	13.3
20	Wood and Products of Wood	347	19.3	341	16.1	-1.7
22	Publishing and Printing	114	6.3	129	6.1	13.2
24	Chemicals and Chemical Products	37	2.1	24	1.1	-35.1
26	Non-metallic Mineral Products	271	15.1	430	20.3	58.7
28	Fabricated Metal Products	18	1.0	36	1.7	100.0
36	Manufacture of Furniture	134	7.4	128	6.0	-4.5
37	Recycling and Other Manufacturing Industries	112	6.0	108	5.1	-3.6
All Manufacturing		1,804	100.0	2,121	100.0	17.6

Source: Manufacturing survey, Statistics Dept

Table 23: Number of manufacturing production workers by Island Division for 2016/17

Island Division		2015/16 (No.)	%	2016/17 (No.)	%	Annual % Change 2016/17
01	Tongatapu Division	1,558	86.4	1,810	85.4	16.1
02	Vava'u Division	190	10.5	199	9.3	4.7
03	Ha'apai & 'Eua Division	55	3.1	112	5.3	103.6
All Manufacturing		1,804	100.0	2,121	100.0	17.6

Source: Manufacturing survey, Statistics Dept

Table 24: Number of manufacturing production workers by Institutional Sector for 2016/17

Institutional Sector		2015/16 (No.)	%	2016/17 (No.)	%	Annual % Change 2016/17
01	Private Sector	1,412	78.3	1,721	81.1	21.9
02	Government and Quasi Government Sector	392	21.7	400	18.9	2.0
All Manufacturing		1,804	100.0	2,121	100.0	17.6

Source: Manufacturing survey, Statistics Dept

APPENDICES

“CONFIDENTIAL”

INSTRUCTIONS FOR COMPLETING THE QUESTIONNAIRE ON QUARTERLY SURVEY OF MANUFACTURING PRODUCTION, EMPLOYMENT AND WAGES/SALARIES.

1. GENERAL

Please note that the code number on the right hand corner of the questionnaire is your establishment's code number based on the Register of Establishments maintained in the Statistics Department. The information, being requested should relate only to the quarter referred to in the questionnaire.

2. PRODUCTION

2.1 Please enter all the products produced by the establishment and for each such product please: - i)
Specify the unit used for measuring each product (e.g. kg, dozen, litre etc.)

ii) Enter the average quantity, in the unit stated in (I) above, of the products produced during each month of the reference quarter.

iii) Enter the average ex-factory value of the quantity referred to in (II) above.

2.2 Enter here the total value of the products other than the main ones mentioned in 2.1 manufactured by the establishment.

2.3 Enter here the total value of work done by your establishment for others.

3. EMPLOYMENT AND WAGES/SALARIES

For each category of employees (at 3.1 a to d) please: -

i) Enter in the column “No” either column 2,5 and 8 the total number of persons engaged in the establishment on the last payday of each month of the reference quarter. The family workers working on the last payday should be entered though they may not be paid.

ii) Enter in column “Wages/Salaries Paid” either column 3, 6 and 9 the total amount of wages and salaries paid to employees by cash/cheque as compensation for the services rendered by them. This should include all payments made on account of bonuses, cost of living allowances and wages paid during vacation and sick leave for the reference period. Payments made to (1) regular/full-time and (2) part-time/casual and daily paid workers should be shown separately.

3.1 Category of Employees: -

a) **Working proprietors and active partners:** are all individual proprietors and partners who are actively engaged in the work of the establishment.

b) **Production workers:** are those who are directly engaged for pay in the production activities of the establishment. They may be full-time/regular or part-time/casual/daily paid.

c) **Unpaid family workers:** refers to all such family members working in the establishment without regular pay at least one-third of the normal working time.

d) **Other employees:** refers to all persons other than those listed above working in the establishment. This shall include administrative, technical and clerical personnel such as salaried Managers, Directors, Clerks, Typist, Bookkeepers, Administrative Supervisors, Salesmen, etc. Proprietors and partners shall be excluded in here but included under 3.1(a) above.

3.2 Memorandum items: (wages and salaries paid in kind) refers to the net cost to the employer, of those goods and services provided to employees free of charge or at a markedly reduced cost which are clearly of benefit to employees. The items included normally are food, beverages, tobacco, clothing etc. Note that an estimated value of these items will be acceptable.

“MALU’I MO FAKAPULIPULI”

**NGAAHI FAKAHINOHINO ‘O E FOOMU FEHU’I FEKAU’AKI MO E SAVEA FAKAKUATA
‘O E NGAAHI NGAUE’ANGA NGAOHI KOLOA.**

1. FAKALUKUFUA

Kataki ‘o fakatokanga’i ange ko e fika mo e fakamatala kotoa pe teke ‘omai ‘e tauhi fakapulipuli ia ‘i he potungaue pea ‘e ‘ikai ke to e faka’aonga’i ia ki ha ‘uhinga kehe. Ko e fika ko ia he ki’i puha he tuliki to’omata’u ‘i ‘olunga, ko e fika ia ho fale ngaue’anga ‘o fakatatau ki he lekooti ‘oku mau tauhi he potungaue ni. Ko e ngaahi fakamatala mo e fika kotoa pe ‘a ia ‘oku fai ki ai e faka’eke’eke ni kuo pau ke fekau’aki ia mo e kuata ‘oku fakaha atu he foomu fehu’i.

2. KOLOA NA’E NGAOHI

2.1 Kataki ‘o lisi mai e ngaahi koloa kehekehe kotoa pe na’e ngaahi ‘i ho fale ngaue lolotonga e kuata ko ia ‘oku fai ki ai e faka’eke’eke pea kataki ‘o: -

- I) Fokotu’u mai he kolomu 2 ‘a e ‘iuniti takitaha ‘oku ngaue’aki ki hono fua/lau ‘o e koloa takitaha na’e ngaahi ‘i he ngaue’anga, (hange ko e kilokalami, toseni, lita etc.)
- II) Fakafonu mai he kolomu 3, 5 mo e 7 ‘a e lahi ‘o e koloa takitaha fakatatau ki he ‘iuniti ‘oku ha ‘i he I) ‘i ‘olunga na’e ngaahi ‘i he ngaue’anga lolotonga e mahina takitaha ‘o e kuata ‘oku fai ki ai e faka’eke’eke.
- III) Fakafonu ‘i he kolomu 4, 6 mo e 8 ‘a e mahu’inga e koloa takitaha na’e ngaahi ‘i he ngaue’anga fakatatau ki he lahi ‘oku ha ‘i he II) ‘i ‘olunga lolotonga e mahina takitaha ‘o e kuata ko ia.

2.2 Fakafonu mai e mahu’inga fakakatoa e ngaahi koloa na’e ngaahi kehe mei he koloa ‘oku ha ‘i he 2.1.

2.3 Fakafonu e mahu’inga fakakatoa e pa’anga na’e ma’u mai ‘i ha ngaue kehe na’e fai ‘i he ngaue’anga (hange ko e ngaue konituleki).

3. KAU NGAUE MO E VAHENGHA

‘I hono fakakalalalasi ‘o e kau ngaue (‘i he 3.1 (a ki he h)) kataki: -

- i) Hanga ‘o fakafonu ange ‘i he kolomu 2, 5 mo e 8 ‘a e tokolahi fakakatoa e kau ngaue he mahina takitaha ‘o e kulupu takitaha ‘o e kau ngaue ‘o fakatatau ki hono fakakalalalasi ‘oku ha atu.
- ii) Fakafonu ange he kolomu 3, 6 mo e 9 ‘a e fakakatoa e pa’anga vahenga ne ‘oange ki he kulupu takitaha ‘o e kau ngaue lolotonga e mahina takitaha ‘o e kuata.

3.1 Kulupu ‘o e kau ngaue: -

- a) **Tokotaha ‘oku ‘o’ona e ngaue’ang:** ‘oku ‘uhinga ‘eni ki he tokotaha ‘oku ‘o’ona e ngaue’anga pea ne toe ngaue foki ki hono ngaahi e koloa.
- e) **Kau ngaue ‘oku nau ngaahi e koloa:** ‘oku ‘uhinga eni ki he kau ngaue ‘oku nau tautonu ki hono ngaahi e koloa ko ia ‘i he ngaue’anga, hange ko e kau ngaue tu’upau/fakataimi/lau’aho (kau ta’oma, kau ta piliki etc.)
- f) **Memipa ‘o e famili ‘oku ngaue ‘o ‘ikai ha vahenga:** ‘oku ‘uhinga ‘eni ki ha memipa ‘o e famili ‘oku ngaue ‘i he ngaue’anga ‘o ‘ikai ha totongi tu’upau ‘o ‘ikai toe si’i hifo ‘i he vahetolu ‘e taha ‘o e houa ngaue tu’upau.
- h) **Toenga ‘o e kau ngaue:** ‘oku ‘uhinga ‘eni ki he kau ngaue ‘oku ‘ikai ke nau kau ‘i he fa’ahinga ‘o e kau ngaue ‘oku ha atu ‘i ‘olunga, ki hono ngaahi ‘o e koloa, (hange ko e kalake, tauhitohi, le’o, faka’uli, faitaipe etc.) ka ‘oku nau kau he ma’u vahenga he ngaue’anga.

3.2 Ngaahi koloa ‘oku foaki ‘ikai ha totongi: ‘oku ‘uhinga ‘eni ki hono fakamahu’inga’i ki he tokotaha ‘oku ‘a’ana ‘a e ngaue’anga ‘a e ngaahi koloa pe ko e ngaahi ‘aonga ‘o e ngaue’anga ki he kau ngaue ‘o ‘ikai ha totongi pe ko e totongi ‘oku ma’ulalo ange ‘i he totongi totonu (lau ki ai ‘a e me’atokoni, inu, tapaka mo e vala).

Printed by STATISTICS DEPARTMENT
Nuku'alofa, TONGA - 2017