



Government of Tonga

SERIES NO.  
SDT: 39-M 115

# STATISTICAL BULLETIN

## ON



# ANNUAL MIGRATION STATISTICS 2025

Statistics Department  
P.O. Box 149,  
Nuku'alofa,  
Kingdom of Tonga  
Website: [www.tongastats.gov.to](http://www.tongastats.gov.to)  
E-mail: [dept@stats.gov.to](mailto:dept@stats.gov.to)  
Feb 2026

## Preface


This is the 26<sup>th</sup> bulletin of annual migration reports produced by the Tonga Statistics Department (TSD) as the main reference for the volume of international visitors, cruise ship passengers, yacht passengers and resident's movement to and from the Kingdom of Tonga. This bulletin covers the period of January to December 2025, including tables providing a monthly breakdown of the data. Comparative data for previous years are also included in this bulletin. The information presented in this bulletin is sourced from the Customs Department and the Immigration Department's Border Management Information System (BMIS), the Migration Information and Data Analysis System (MIDAS).


The primary purpose of collecting and compiling Migration Statistics is to provide valuable data for planners and decision-makers. With Tonga experiencing a high rate of net migration loss, where more people are leaving than entering the country, the production of accurate and timely migration statistics is essential. These data also contribute to the development of the Population Estimation and Projection reports by the TSD.

This bulletin presents information on arrivals and departures, disaggregated by purpose of travel, reasons for absence, country of usual residence, and country visited.

Special thanks are extended to the Immigration Department of the Ministry of Foreign Affairs and the Customs Departments of the Ministry of Revenue and Customs for their assistance in providing the administrative data and information for this report.

We welcome any suggestions from recipients of this bulletin that may help us improve future editions.

  
Sione Lolohea  
Government Statistician



# Table of Contents

- Preface..... 2
- List of Figures ..... 4
- List of Tables..... 4
- 1. MAIN FEATURES ..... 5
  - 1.1. General ..... 5
  - 1.2. Total International Arrivals and Departures..... 5
  - 1.3. Total international arrivals and departures by annual percentage change ..... 6
- 2. INTERNATIONAL ARRIVALS ..... 7
  - 2.1. Total International Arrivals by Transport Mode from 2016 - 2025 ..... 7
  - 2.2. Total International Arrivals by Transport Mode for 2025 ..... 7
  - 2.3. Total International Air Arrivals by Passenger Type and Month ..... 8
  - 2.4. Total Air Visitors by Country of Usual Residence ..... 8
  - 2.5. Visitors Arrivals by Purpose of Visit for 2025 ..... 9
  - 2.6. International Air Arrivals by Age Group for 2025 ..... 9
- 3. INTERNATIONAL DEPARTURES..... 10
  - 3.1. Air Departures by Sex and Month for 2025 ..... 10
  - 3.2. Air Departures by Country of Usual Residence for 2025 ..... 10
- 4. EXPLANATORY NOTES ..... 11
  - 4.1. PURPOSE ..... 11
  - 4.2. COVERAGE ..... 11
  - 4.3. SOURCE OF DATA ..... 11
  - 4.4. DATA LIMITATIONS ..... 11
- 5. GLOSSARY ..... 12

## List of Figures

Figure 1: Total International Arrivals & Departures 2016 - 2025 .....	5
Figure 2: International Arrivals by Transport Mode 2016 - 2025.....	7
Figure 3: Monthly International Arrivals by Transport Mode, 2025 .....	7
Figure 4: Total International Arrivals by Passenger Type and Month 2025.....	8
Figure 5: Air Visitors by Country of Usual Residence for 2025 .....	8
Figure 6: Air visitors by purpose of visit, 2025 .....	9
Figure 7: Air arrivals by age group, 2025 .....	9
Figure 8: Total departures by sex and month, 2025 .....	10
Figure 9: Air departures by country of usual residence, 2025 .....	10

## List of Tables

Table 1.3.1: Total International Arrivals and Departures 2005 – 2025 .....	15
--	----

## List of Statistics Tables

Table 1: Monthly Arrival and Departure by Mode of Travel and Net Migration 2023-2025..	13
Table 2: Total Arrivals by Age Group, Month, Sex and Passenger Type in 2025 .....	14
Table 3: Air Visitors by Country of Residence and Purpose of Visit 2025 .....	15
Table 4: Air departures by age group and passenger type for the year 2025.....	15
Table 5: Total air departures by residence and sex for the year 2025.....	16

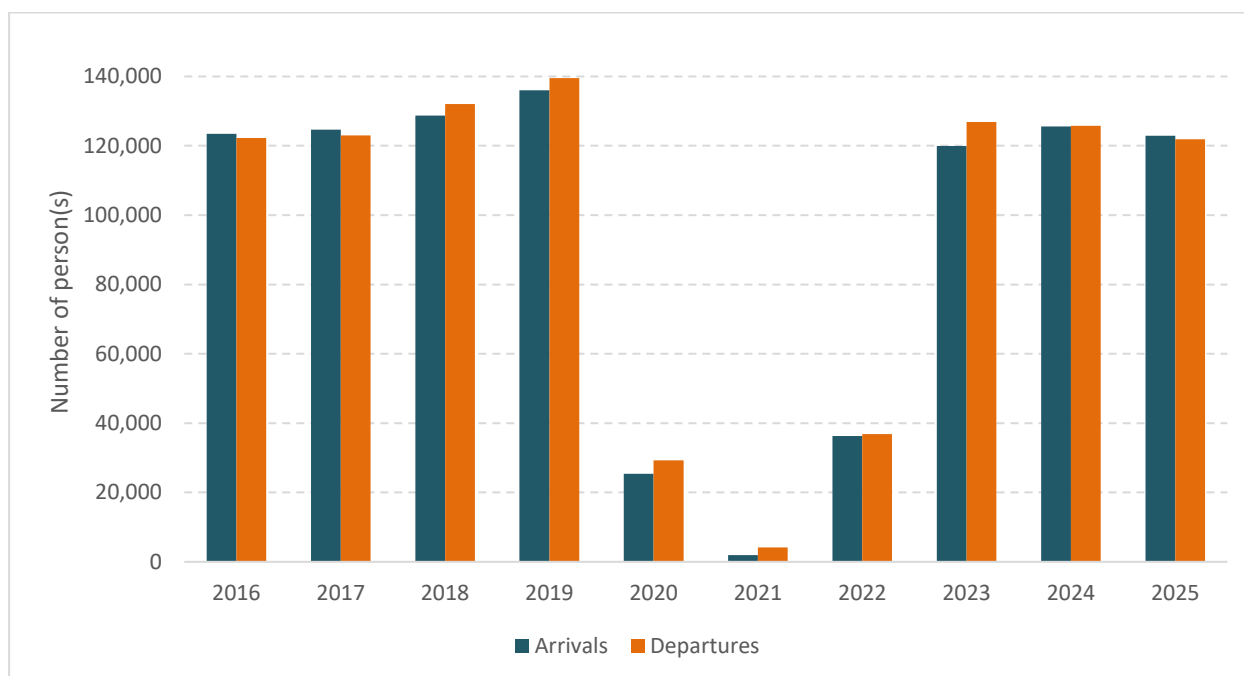
# 1. MAIN FEATURES

## 1.1.General

- Net overseas migration is the net gain or loss of population through immigration to Tonga and emigration from Tonga.
- Individuals are considered residents when residing in Tonga for 12 months or more.
- For 2025, **total international arrivals were 122,903** and **total departures were 122,388**, a net **inflow of 515**. This means more people arrived in the Kingdom than departing in 2025.

## 1.2.Total International Arrivals and Departures

**Figure 1: Total International Arrivals & Departures 2016 - 2025**



**Figure 1** shows the trend in international arrivals and departures from 2016 to 2025. In 2016 and 2017, international arrivals exceeded international departures. However, this pattern reversed from 2018 to 2024, with international departures consistently exceeding arrivals, indicating a net migration loss.

A sharp decline in both arrivals and departures was observed between 2019 and 2021, mainly due to the COVID-19 pandemic, which led to travel restrictions and the complete closure of some international borders.

Migration increased from 2021 to 2022 as borders reopened for both air and sea travelers. This trend continued until 2024. In 2025, the trend shifted again, with higher international arrivals than departures, although both movements recorded a slight decline compared to the previous year.

### 1.3.Total international arrivals and departures by annual percentage change

**Table 1.3.1: Total International Arrivals and Departures 2005 – 2025**

Year	Total Arrivals	% Change	Total Departures	% Change
2005	76,286	14.5%	73,540	4.7%
2006	78,652	3.1%	82,268	11.9%
2007	75,587	-3.9%	83,416	1.4%
2008	91,128	20.6%	92,890	11.4%
2009	99,803	9.5%	99,360	7.0%
2010	89,506	-10.3%	90,607	-8.8%
2011	94,960	6.1%	95,607	5.5%
2012	82,400	-13.2%	83,805	-12.3%
2013	85,473	3.7%	85,134	1.6%
2014	92,374	8.1%	94,090	10.5%
2015	104,070	12.7%	105,379	12.0%
2016	123,462	18.6%	122,266	16.0%
2017	124,703	1.0%	122,970	0.6%
2018	128,734	3.2%	132,086	7.4%
2019	136,059	5.7%	139,527	5.6%
2020	25,382	-81.3%	29,306	-79.0%
2021	1,903	-92.5%	4,132	-85.9%
2022	36,314	1808.3%	36,880	792.5%
2023	119,916	230.2%	126,866	244.0%
2024	125,584	4.7%	125,784	-0.9%
<b>2025</b>	<b>122,903</b>	<b>-2.1%</b>	<b>122,388</b>	<b>-2.7%</b>

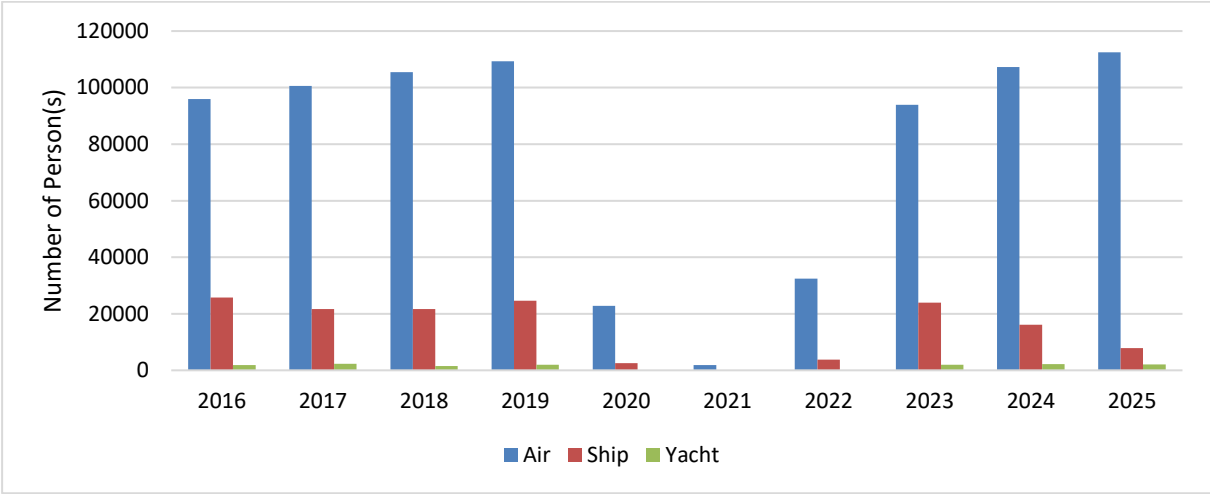
**Table 1** shows the total arrivals (persons arriving) in the Kingdom, with the highest point in 2019 at 136,059. The largest increase in arrivals occurred from 2021 to 2022, with an 1808.3% rise. This surge followed the lifting of COVID-19 restrictions and the reopening of borders. The following year, from 2022 to 2023, saw a 230.2% increase.

Similarly, total departures (persons leaving Tonga) peaked in 2019 at 139,527. The most significant decline in departures occurred from 2020 to 2021, with a 92.5% drop, reflecting the impact of the COVID-19 pandemic on migration. Departures began to rise again in 2022, following the reopening of borders, with an increase of 792.5%, followed by 244.0% in 2023. In 2024, departures saw a slight rise of 4.7% compared to 2023, with a minor decline of 0.9% from 2023 to 2024. In 2025, both air arrivals and departures declined slightly, by 2.1% and 2.7%, respectively.

## 2. INTERNATIONAL ARRIVALS

### 2.1. Total International Arrivals by Transport Mode from 2016 - 2025

**Figure 2: International Arrivals by Transport Mode 2016 - 2025**



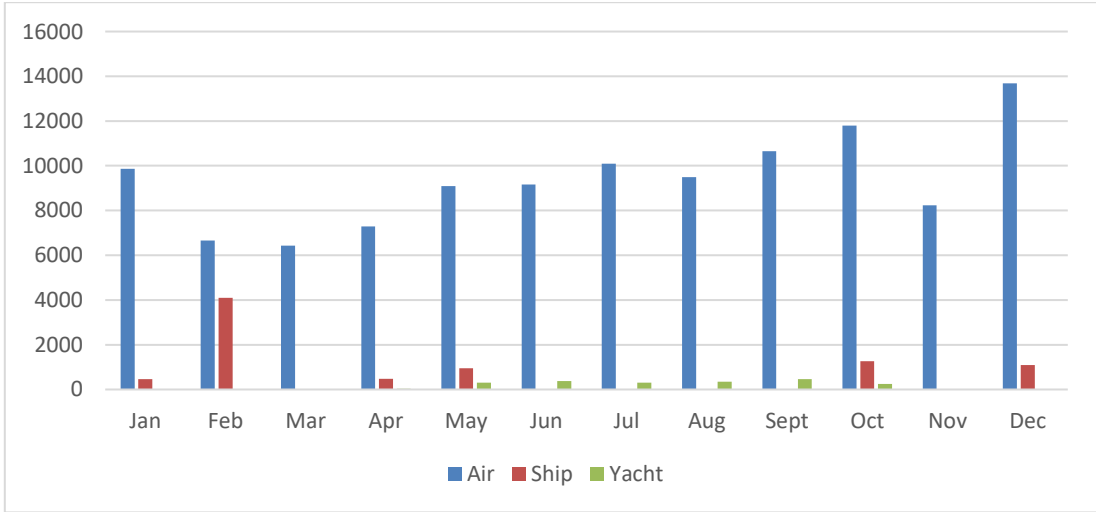
**Figure 2** shows the total international arrivals to the Kingdom by transport mode between 2016 and 2025. As observed, air arrivals dominate the total number of arrivals, followed by arrivals on cruise ships, while yachts account for the least number of arrivals.

The steep rise from 2016 to 2019 in air arrivals reflects the increasing rate of migration prior to the COVID-19 disruption, with a total of 109,371 international arrivals in 2019. However, a steep decline is observed from 2019 to 2021, reflecting the significant impact of the pandemic on travel. Borders were closed and restrictions were imposed on travel, contributing to the steep decline in international travel.

A recovery from the pandemic is observed from 2022 to 2025 as air arrivals increased significantly gradually returning to pre-pandemic migration trend observed in 2016 to 2019, with a total of 112,440 international air arrivals recorded in 2025.

### 2.2. Total International Arrivals by Transport Mode for 2025

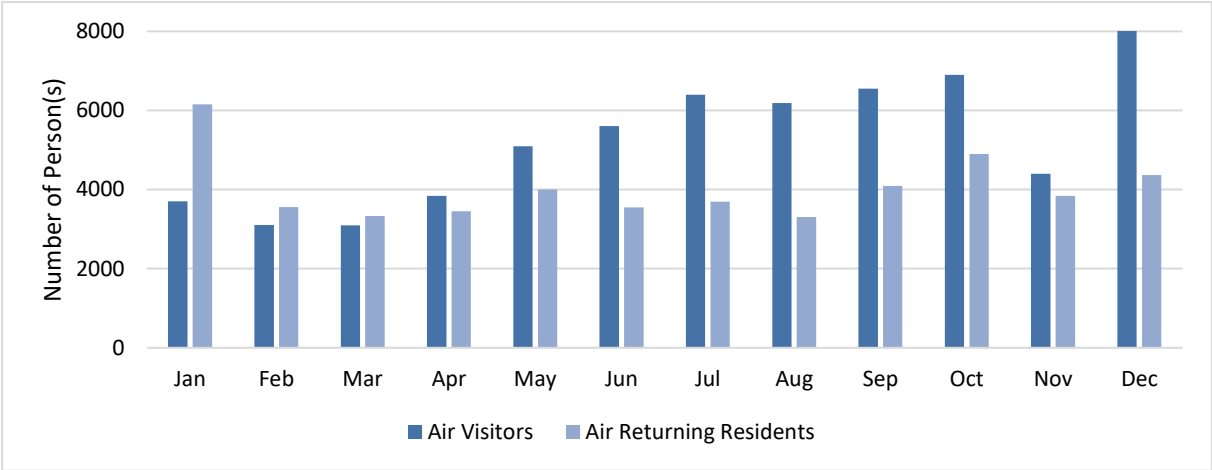
**Figure 3: Monthly International Arrivals by Transport Mode, 2025**



**Figure 3** illustrates the monthly arrivals by transportation mode in 2025. As shown, air arrivals are the highest across all months. There were no cruise ship arrivals in the months of January, March, June, July, August, September and November, and no yacht arrivals in February, March, and December as detailed in **Table 1**.

**2.3. Total International Air Arrivals by Passenger Type and Month**

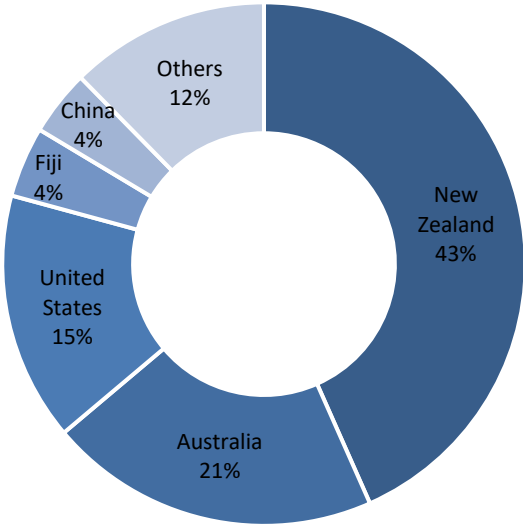
**Figure 4: Total International Arrivals by Passenger Type and Month 2025**



**Figure 4** shows the highest number of returning residents arrived in Tonga in 2025 occurred in January (6,158). As for visitors, the highest number of air arrivals occurred in December (9,313).

**2.4. Total Air Visitors by Country of Usual Residence**

**Figure 5: Air Visitors by Country of Usual Residence for 2025**



**Figure 5** presents the percentage distribution of air visitors by country of usual residence for 2025. New Zealand remains the leading country of usual residence for visitor arrivals, accounting for 43.4% (27,833) of total visitors. This was followed by Australia with 20.5% (13,154) and the United States at 15.4% (9,864).

## 2.5. Visitors Arrivals by Purpose of Visit for 2025

Figure 6: Air visitors by purpose of visit, 2025

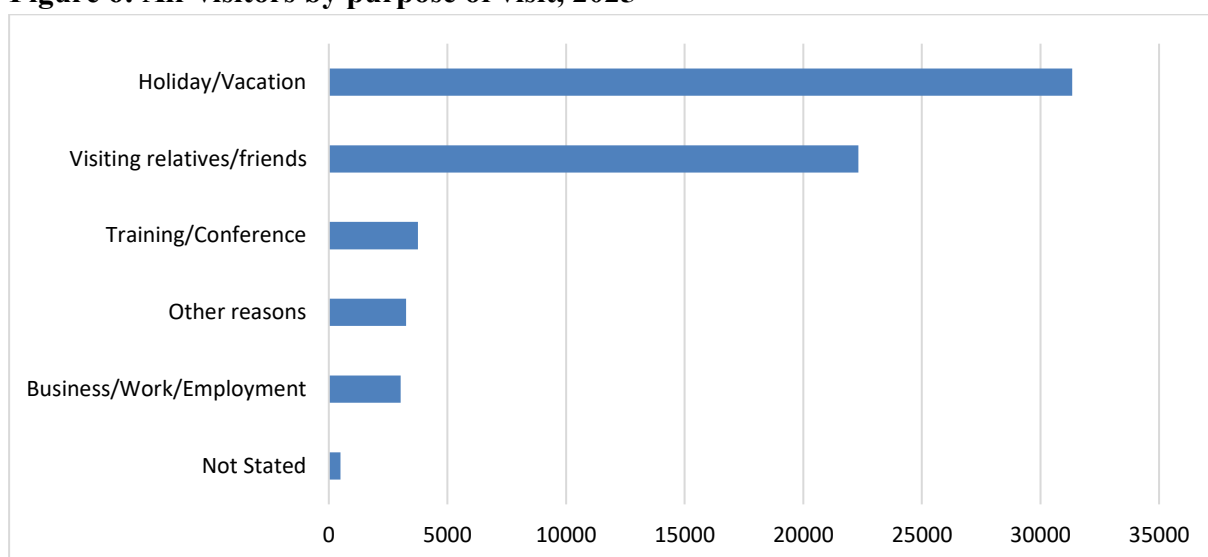


Figure 6 shows that the majority of the visitors to the Kingdom arrived for holiday/vacation purposes, accounting for 48.8% (31,332) of total arrivals. This was followed by 34.8% (22,330) who came to visit relatives and friends, and 5.8% (3,753) arrived for training/conference purposes.

## 2.6. International Air Arrivals by Age Group for 2025

Figure 7: Air arrivals by age group, 2025

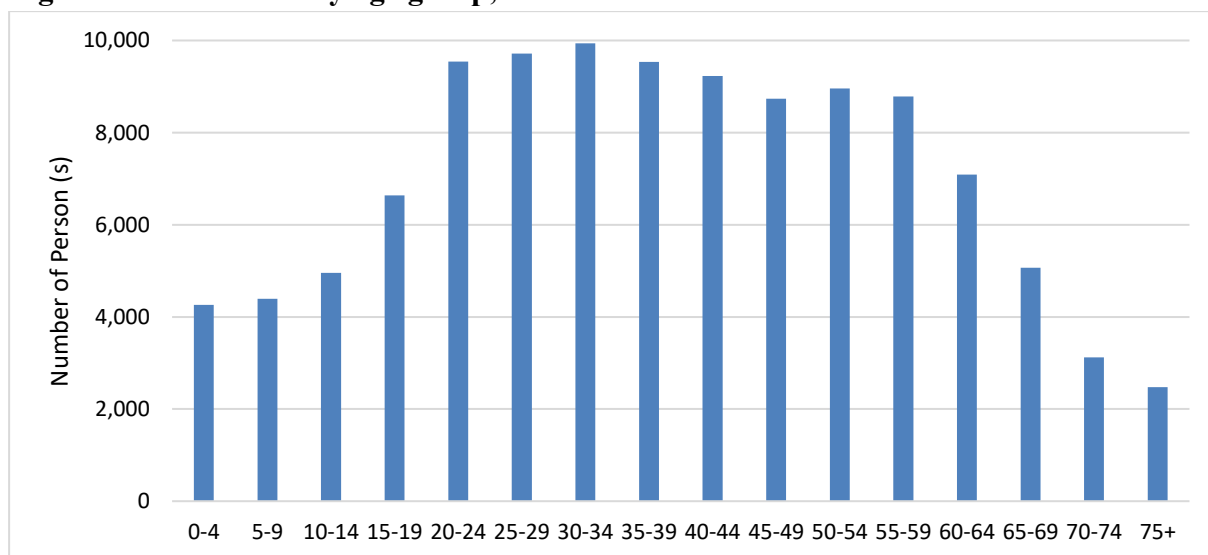


Figure 7 shows that the majority of air arrivals were in the 30–34 age group (9,936), followed by those aged 25–29 (9,716) and 20 – 24 (9,541).

### 3. INTERNATIONAL DEPARTURES

#### 3.1. Air Departures by Sex and Month for 2025

Figure 8: Total departures by sex and month, 2025

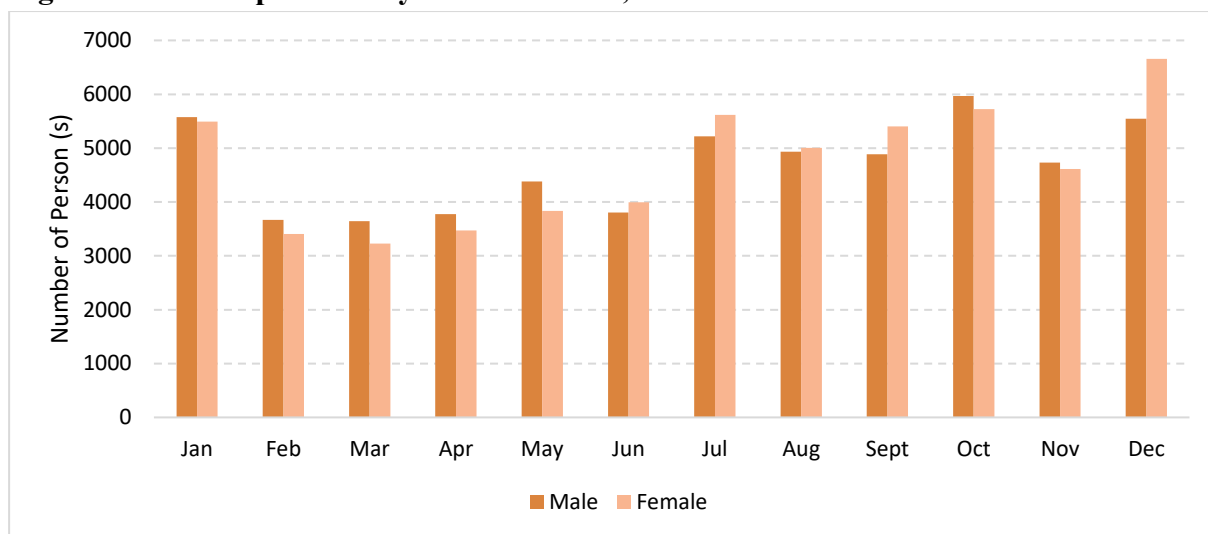


Figure 8 shows that the highest number of departures was recorded in October, with 5,967 males and 6,656 females leaving the Kingdom in December. The lowest number of departures occurred in March with 3,646 males and 3,230 females. This was followed by February.

#### 3.2. Air Departures by Country of Usual Residence for 2025

Figure 9: Air departures by country of usual residence, 2025

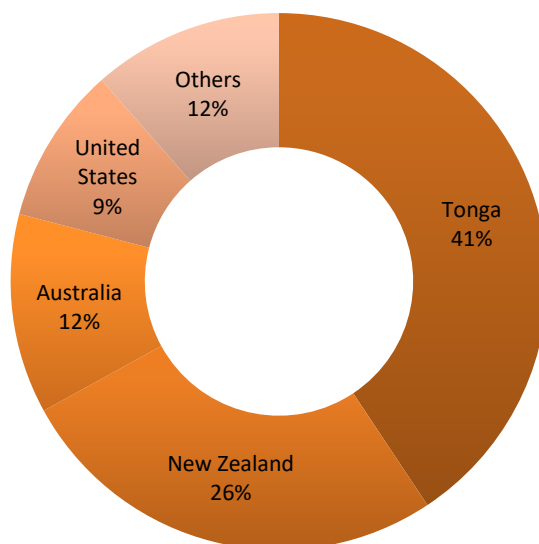


Figure 9 shows that most departures in 2025 were Tongan residents, accounting for 45,784 (40.67%) of total departures. This was followed by New Zealand residents at 29,652 (26.34%) and Australian residents at 13,551 (12.04%).

## **4. EXPLANATORY NOTES**

### **4.1.PURPOSE**

This bulletin aims to give an overview of total international arrivals and departures and their main social and economic characteristics.

Statistics on Overseas Arrivals and Departures are related to the number of movements of travelers rather than the number of travelers (i.e. the multiple movements of individual people during a given reference period are all counted).

### **4.2.COVERAGE**

This bulletin covers all international arrivals and departures to and from the Kingdom of Tonga, including cruise ships and yachts during 2025. This includes both international ports in Nuku'alofa, Tongatapu and Neiafu, Vava'u.

### **4.3.SOURCE OF DATA**

Data is sourced from the Customs Department and the Immigration Department's Border Management Information System (BMIS), the Migration Information and Data Analysis System (MIDAS).

### **4.4.DATA LIMITATIONS**

Passengers on yachts and ships do not complete arrival and departure cards, therefore we are unable to provide details on Age, Sex and Purpose of visit.

Due to the limitation and incomplete data, we cannot determine whether arrivals and departures are of a long term or short-term duration.

*(Note: This problem was caused by incomplete arrival and departure card)*

## 5. GLOSSARY

- ▶ **A Visitor** is a person other than a Tongan citizen, permit holder and exempted person, who usually stays at least 24 hours in the kingdom, or who stays overnight in accommodation within Tonga. This refers to passengers arriving by air and yacht only.
- ▶ **Cruise Ship Passengers** are defined as those who **arrive and depart in the same vessel**, which is a cruise trip, and use that vessel's accommodation during their stay in Tonga. They are also known as "Excursionist"
- ▶ **A Returning Resident** is a person who has the Kingdom of Tonga as their permanent address for more than six months of the year and returns to Tonga after a trip overseas. Tongan residence is self-defined as reported by travelers when completing the Passenger Arrival Card.
- ▶ **Mode of Transport.** Only **air, yacht and cruise ships** passengers are included. Passenger/crew on cargo, navy or special vessels are excluded.
- ▶ **Main reason for journey.** On arrival in Tonga, all overseas visitors and Tongan residents are asked to state their purpose of journey. Statistics are published using the following categories:
  - Holiday/Vacation
  - Business/Work/Employment
  - Training/Conference
  - Visiting Friends and/or Relatives/Returning Residents
  - Others

**Table 1: Monthly Arrival and Departure by Mode of Travel and Net Migration 2023-2025**

Period	Visitors Arrivals				Returning Residents				Total Arrivals				Total Departures				Net Mig.
	Air	Ship	Yacht	Total	Air	Ship	Yacht	Total	Air	Ship	Yacht	Total	Air	Ship	Yacht	Total	
2015	53,752	17,375	1,426	72,553	31,517	-	-	31,517	85,269	17,375	1,426	104,070	86,574	17,383	1,422	105,379	1,309
2016	59,130	25,714	1,818	86,662	36,800	-	-	36,800	95,930	25,714	1,818	123,462	95,043	25,703	1,520	122,266	1,196
2017	62,506	21,719	2,354	86,579	38,124	-	-	38,124	100,630	21,719	2,354	124,703	99,280	21,698	1,992	122,970	1,733
2018	54,046	21,708	1,552	77,306	51,428	-	-	51,428	105,474	21,708	1,552	128,734	108,770	21,714	1,602	132,086	3,352
2019	67,284	24,667	2,021	93,972	42,087	-	-	42,087	109,371	24,667	2,021	136,059	112,714	24,749	2,064	139,527	3,468
2020	9,010	2,530	6	11,546	13,836	-	-	13,836	22,846	2,530	6	25,382	26,769	2,529	8	29,306	3,924
2021	202	-	-	202	1,701	-	-	1,701	1,903	-	-	1,903	4,132	-	-	4,132	2,229
2022	18,427	3,799	92	22,318	13,996	-	-	13,996	32,423	3,799	92	36,314	33,018	3,797	65	36,880	566
2023	55,749	23,943	2,002	81,694	38,222	-	-	38,222	93,971	23,943	2,002	119,916	100,980	23,937	1,949	126,866	6,950
2024	62,868	16,214	2,154	81,236	44,438	-	-	44,438	107,306	16,124	2,154	125,584	108,036	16,133	1,626	125,795	-211
2025	64,183	8,358	2,105	74,646	48,257	-	-	48,257	112,440	8,358	2,105	122,903	112,573	8,358	1,457	122,388	515
<b>2023</b>																	
Jan	3,330	2,856	-	6,186	3,780	-	-	3,780	7,110	2,856	-	9,966	9,346	2,856	-	12,202	2,236
Feb	2,671	319	-	2,990	2,666	-	-	2,666	5,337	319	-	5,656	6,346	319	-	6,665	1,009
Mar	3,085	207	-	3,292	2,407	-	-	2,407	5,492	207	-	5,699	6,621	207	-	6,828	1,129
Apr	3,540	2,872	6	6,418	2,724	-	-	2,724	6,264	2,872	6	9,142	6,689	2,872	20	9,581	439
May	4,349	-	213	4,562	3,626	-	-	3,626	7,975	-	213	8,188	7,515	-	36	7,551	637
Jun	5,861	-	137	5,998	3,050	-	-	3,050	8,911	-	137	9,048	7,122	-	192	7,314	1,734
Jul	6,435	4,832	294	11,561	2,847	-	-	2,847	9,282	4,832	294	14,408	10,411	4,832	397	15,640	1,232
Aug	6,058	2,369	273	8,700	2,940	-	-	2,940	8,998	2,369	273	11,640	9,638	2,369	257	12,264	624
Sep	5,141	-	357	5,498	3,564	-	-	3,564	8,705	-	357	9,062	9,299	-	399	9,698	636
Oct	3,760	4,027	285	8,072	3,167	-	-	3,167	6,927	4,027	285	11,239	7,562	4,025	342	11,929	690
Nov	4,196	4,702	425	9,323	3,511	-	-	3,511	7,707	4,702	425	12,834	8,260	4,700	282	13,242	408
Dec	7,323	1,759	12	9,094	3,940	-	-	3,940	11,263	1,759	12	13,034	12,171	1,757	24	13,952	918
<b>2024</b>																	
Jan	3,762	674	11	4,447	5,672	-	-	5,672	9,434	674	11	10,119	11,330	674	-	12,004	1,885
Feb	3,240	2,340	-	5,580	3,766	-	-	3,766	7,006	2,340	-	9,346	7,385	2,339	-	9,724	378
Mar	3,520	1,378	-	4,898	3,013	-	-	3,013	6,533	1,378	-	7,911	7,075	1,377	-	8,452	541
Apr	3,882	611	29	4,522	3,355	-	-	3,355	7,237	611	29	7,877	6,947	611	2	7,560	317
May	5,039	-	363	5,402	3,632	-	-	3,632	8,671	-	363	9,034	8,330	-	103	8,433	601
Jun	7,277	-	309	7,586	3,434	-	-	3,434	10,711	-	309	11,020	6,982	-	414	7,396	3,624
Jul	7,453	2,768	359	10,580	3,123	-	-	3,123	10,576	2,768	359	13,703	12,157	2,768	360	15,285	1,582
Aug	6,679	2,287	296	9,262	3,192	-	-	3,192	9,871	2,287	296	12,454	10,125	2,290	230	12,645	191
Sep	5,930	-	412	6,342	3,724	-	-	3,724	9,654	-	412	10,066	9,341	-	289	9,630	436
Oct	4,460	4,908	234	9,602	2,857	-	-	2,857	7,317	4,908	234	12,459	7,084	4,907	181	12,172	287
Nov	4,255	750	139	5,144	4,239	-	-	4,239	8,494	750	139	9,383	9,250	748	47	10,045	662
Dec	7,371	408	2	7,781	4,431	-	-	4,431	11,802	408	2	12,212	12,030	408	-	12,438	226
<b>2025</b>																	
Jan	3,700	468	3	4,171	6,158	-	-	6,158	9,858	468	3	10,329	11,066	468	3	11,537	-1,208
Feb	3,106	4,099	-	7,205	3,559	-	-	3,559	6,665	4,099	-	10,764	7,072	4,099	-	11,171	-407
Mar	3,099	-	-	3,099	3,330	-	-	3,330	6,429	-	-	6,429	6,876	-	-	6,876	-447
Apr	3,838	473	40	4,351	3,448	-	-	3,448	7,286	473	40	7,799	7,244	473	33	7,750	49
May	5,091	950	304	6,345	4,005	-	-	4,005	9,096	950	304	10,350	8,214	950	121	9,285	1,065
Jun	5,604	-	381	5,985	3,552	-	-	3,552	9,156	-	381	9,537	7,799	-	258	8,057	1,480
Jul	6,399	-	301	6,700	3,696	-	-	3,696	10,095	-	301	10,396	10,835	-	200	11,035	-639
Aug	6,188	-	344	6,532	3,310	-	-	3,310	9,498	-	344	9,842	9,937	-	304	10,241	-399
Sept	6,550	-	464	7,014	4,094	-	-	4,094	10,644	-	464	11,108	10,290	-	174	10,464	644
Oct	6,896	1,269	253	8,418	4,903	-	-	4,903	11,799	1,269	253	13,321	11,691	1,269	360	13,320	1
Nov	4,399	-	15	4,414	3,837	-	-	3,837	8,236	-	15	8,251	9,347	-	4	9,351	-1,100
Dec	9,313	1,099	-	10,412	4,365	-	-	4,365	13,678	1,099	-	14,777	12,202	1,099	-	13,301	1,476

**Table 2: Total Arrivals by Age Group, Month, Sex and Passenger Type in 2025**

Age Group	Total	Jan	Feb	Mar	Apr	May	Jun	Jul	Aug	Sep	Oct	Nov	Dec
0-4	4,258	532	217	233	243	293	360	389	283	330	434	297	647
5-9	4,394	824	384	167	244	206	327	401	230	315	308	232	756
10-14	4,956	941	503	336	292	220	286	478	222	318	292	198	870
15-19	6,637	827	557	527	360	393	576	691	314	529	465	387	1,011
20-24	9,541	764	506	545	596	826	855	786	737	930	996	856	1,144
25-29	9,716	712	514	537	625	844	722	831	874	981	1,120	751	1,205
30-34	9,936	649	556	561	679	759	799	881	986	1,076	1,112	728	1,150
35-39	9,537	747	579	582	618	770	687	859	885	1,003	1,062	684	1,061
40-44	9,229	632	529	567	638	781	758	842	867	923	1,066	666	960
45-49	8,736	618	565	550	611	788	693	760	813	822	968	618	930
50-54	8,961	693	478	563	611	809	700	788	870	881	971	640	957
55-59	8,786	646	306	168	586	866	798	826	856	889	1,023	717	1,105
60-64	7,089	465	386	388	466	620	621	640	613	703	796	594	797
65-69	5,068	385	270	325	343	479	462	427	430	455	542	419	531
70-74	3,119	223	159	205	218	247	284	282	298	299	349	254	301
75+	2,477	200	156	175	156	195	228	214	220	190	295	195	253
<b>Total Air Arrivals</b>	<b>112,440</b>	<b>9,858</b>	<b>6,665</b>	<b>6,429</b>	<b>7,286</b>	<b>9,096</b>	<b>9,156</b>	<b>10,095</b>	<b>9,498</b>	<b>10,644</b>	<b>11,799</b>	<b>8,236</b>	<b>13,678</b>
% Distribution	100%	8.8%	5.9%	5.7%	6.5%	8.1%	8.1%	9.0%	8.4%	9.5%	10.5%	7.3%	12.2%
<b>BY SEX</b>													
Male	56,289	4,542	3,255	3,268	3,603	4,830	4,588	4,872	4,740	5,486	6,142	4,078	6,885
Female	56,151	5,316	3,410	3,161	3,683	4,266	4,568	5,223	4,758	5,158	5,657	4,158	6,793
<b>Total Air Arrivals</b>	<b>112,440</b>	<b>9,858</b>	<b>6,665</b>	<b>6,429</b>	<b>7,286</b>	<b>9,096</b>	<b>9,156</b>	<b>10,095</b>	<b>9,498</b>	<b>10,644</b>	<b>11,799</b>	<b>8,236</b>	<b>13,678</b>
<b>PASSENGER TYPES</b>													
Returning Residents	48,257	6,158	3,559	3,330	3,448	4,005	3,552	3,696	3,310	4,094	4,903	3,837	4,365
Visitors	64,183	3,700	3,106	3,099	3,838	5,091	5,604	6,399	6,188	6,550	6,896	4,399	9,313
Cruise Ship	8,358	468	4,099	0	473	950	0	0	0	0	1,269	0	1,099
Yacht	2,105	3	0	0	40	304	381	301	344	464	253	15	0
<b>Total Arrivals</b>	<b>122,903</b>	<b>10,329</b>	<b>10,764</b>	<b>6,429</b>	<b>7,799</b>	<b>10,350</b>	<b>9,537</b>	<b>10,396</b>	<b>9,842</b>	<b>11,108</b>	<b>13,321</b>	<b>8,251</b>	<b>14,777</b>

**Table 3: Air Visitors by Country of Residence and Purpose of Visit 2025**

Country of Residence	Purpose of Visit							
	Total	Percent Distribution	Holiday/Vacation	Business/Work/Employment	Training/Conference	Visiting Relatives/Friends/Returning Residents	Other reasons	Not Stated
Australia	1,3154	20.5	6,545	578	814	4,410	719	88
New Zealand	2,7833	43.4	12,739	846	847	12,271	1,014	116
Fiji	2802	4.4	644	504	617	586	418	33
American Samoa	40	0.1	4	0	3	20	13	0
Western Samoa	395	0.6	97	22	125	98	47	6
Other Pacific Islands	1,085	1.7	242	129	402	152	158	2
Japan	758	1.2	392	90	86	138	52	0
China	2599	4.0	1,516	244	87	609	98	45
India	133	0.2	31	42	30	13	17	0
Korea	47	0.1	19	4	8	14	2	0
Other Asian Countries	1,011	1.6	588	154	114	74	71	10
UK	818	1.3	574	54	88	61	36	5
Germany	584	0.9	519	5	9	31	18	2
France	372	0.6	209	29	76	37	17	4
Italy	156	0.2	131	1	10	11	3	0
Other European Countries	1,809	2.8	1,615	38	46	51	34	25
All African Countries	308	0.5	180	26	45	29	23	5
United States of America	9,865	15.4	4,980	239	327	3,690	497	132
Canada	402	0.6	299	14	18	32	19	20
Other American Countries	12	0.0	8	0	1	3	0	0
<b>Total</b>	<b>64,183</b>	<b>100</b>	<b>31,332</b>	<b>3,024</b>	<b>3,753</b>	<b>22,330</b>	<b>3,256</b>	<b>492</b>
<b>Percent Distribution (%)</b>	<b>100%</b>	<b>100%</b>	<b>48.8%</b>	<b>4.7%</b>	<b>5.8%</b>	<b>34.8%</b>	<b>5.1%</b>	<b>0.8%</b>

**Table 4: Air departures by age group and passenger type for the year 2025**

Age Group	Total	Percent Distribution (%)	Departing Residents	Percent Distribution (%)	Visitors	Percent Distribution (%)
0 - 4	4,185	3.7	1,377	3.0	2,808	4.2
5 - 9	4,317	3.8	1,628	3.6	2,689	4.0
10 - 14	5,132	4.6	2,269	5.0	2,863	4.3
15 - 19	7,900	7.0	4,176	9.1	3,724	5.6
20 - 24	9,507	8.4	5,236	11.4	4,271	6.4
25 - 29	9,456	8.4	4,442	9.7	5,014	7.5
30 - 34	9,938	8.8	4,271	9.3	5,667	8.5
35 - 39	9,371	8.3	3,642	8.0	5,729	8.6
40 - 44	9,079	8.1	3,487	7.6	5,592	8.4
45 - 49	8,719	7.7	3,154	6.9	5,565	8.3
50 - 54	8,931	7.9	3,293	7.2	5,638	8.4
55 - 59	8,417	7.5	2,932	6.4	5,485	8.2
60 - 64	7,029	6.2	2,308	5.0	4,721	7.1
65 - 69	5,025	4.5	1,603	3.5	3,422	5.1
70 - 74	3,150	2.8	1,048	2.3	2,102	3.1
75+	2,417	2.1	908	2.0	1,509	2.3
<b>Total</b>	<b>112,573</b>	<b>100%</b>	<b>45,774</b>	<b>40.7%</b>	<b>66,799</b>	<b>59.3%</b>

**Table 5: Total air departures by residence and sex for the year 2025**

Country of Usual Residence	Total No.	Percent Distribution (%)	Male No.	Percent Distribution (%)	Female No.	Percent Distribution (%)
Australia	13,551	12.04	6,541	11.65	7,010	12.42
New Zealand	29,652	26.34	13,940	24.84	15,712	27.84
Fiji	2763	2.45	1615	2.88	1,148	2.03
American Samon	53	0.05	19	0.03	34	0.06
Western Samoa	330	0.29	166	0.30	164	0.29
Tonga	45,784	40.67	23,397	41.69	22,387	39.66
Other Pacific Islands	1091	0.97	613	1.09	478	0.85
Japan	729	0.65	452	0.81	277	0.49
China	2488	2.21	1,395	2.49	1,093	1.94
India	133	0.12	105	0.19	28	0.05
Korea	30	0.03	18	0.03	12	0.02
Other Asian Countries	993	0.88	575	1.02	418	0.74
UK	798	0.71	449	0.80	349	0.62
Germany	581	0.52	306	0.55	275	0.49
France	320	0.28	200	0.36	120	0.21
Italy	171	0.15	92	0.16	79	0.14
Other European Countries	1,762	1.57	950	1.69	812	1.44
All African Countries	277	0.25	133	0.24	144	0.26
United States of America	10,652	9.46	4,940	8.80	5,712	10.12
Canada	399	0.35	214	0.38	185	0.33
Other American Countries	16	0.01	7	0.01	9	0.02
<b>Total Air Departures</b>	<b>112,573</b>	<b>100%</b>	<b>56,127</b>	<b>49.9%</b>	<b>56,446</b>	<b>50.1%</b>

---

**Printed by STATISTICS DEPARTMENT**

**Nuku'alofa, TONGA—2026**

---