



Government of Tonga
Tonga Statistics Department

STATISTICAL BULLETIN

FOOD PRICE INDEX— February 2026

(Base Period: Average 12 months 2021 = 100.0)

Level 1, Si'i-Ka-E-Ola Building

P.O Box 149

<https://tongastats.gov.to>

+676 23-300

dept@stats.gov.to

KEY POINTS

February 2026 compared to February 2025:

Annual Food Inflation Rate is -13%

Groups with significant percentage shifts in FPI:

- ◆ Ready-made Food and Other Food Products: +11.3%
- ◆ Live Animals, Meat, and Other Parts of Slaughtered Land Animals: +8.9%
- ◆ Oils and Fats: +5.6%
- ◆ Vegetables, Tubers, Plantains, Cooking Bananas and Pulses: -13.1%
- ◆ Milk, Other Dairy Products and Eggs: -10.4%

Annual Food Price Inflation Rate

In February 2026, the Food Price Index (FPI) for all items stood at 56.5, a decrease from 57.2 in February 2025. This represents a 1.3% decrease in the annual Food Price inflation rate.

The FPI is derived from the Food and Non-Alcoholic Beverages component of the Consumer Price Index (CPI) basket, which encompasses both locally and imported products. A year-on-year comparison reveals a significant 5.4% decline in the price of locally produced food items; in contrast, the imported food and non-alcoholic beverages recorded a 6.3% price increase over the same period.

During the year ending February 2026, several categories contributed to the overall decrease in FPI. The largest contributor was the vegetables, tubers, plantains, cooking bananas, and pulses group, which declined by 13.1% contributing 1.0 percentage points to the overall decrease, primarily driven by a fall in tomato prices. The milk, other dairy products, and eggs categories declined by 10.4%, contributing 0.3 percentage points to the decrease in FPI, mainly due to lower price for powdered milk.

Despite the general decline, certain categories experienced a price increase, that partially offset the overall reduction. The live animals, meat and other parts of slaughtered land animals rose by 8.9%, contributing 1.0 percentage points to the overall FPI, largely attributed to price increases for pork. Similarly, ready-made food and other food products group recorded a 11.3% price increase, adding 0.2 percentage points to the FPI, driven by higher prices for bongos and twisties

Monthly Food Price Inflation Rate

The monthly Food Price Index (FPI) declined by 4.3%, decreasing from 59.0 in January 2026 to 56.5 in February 2026. The downward trend was driven primarily by a 5.3% decrease in locally produced food items, similarly, the imported food and non-alcoholic beverages recorded a 0.1% price decrease over the same period.

The fruits and nuts category recorded the most notable decline in its monthly FPI of 10.3%, largely attributed to a decrease in the price of watermelon. Similarly, the vegetables, tubers, plantains, cooking bananas and pulses category also declined by 8.4%, driven mainly by lower prices for tomatoes.

Figure 1: Consumer Price Index and Food Price Index, February 2025 – February 2026

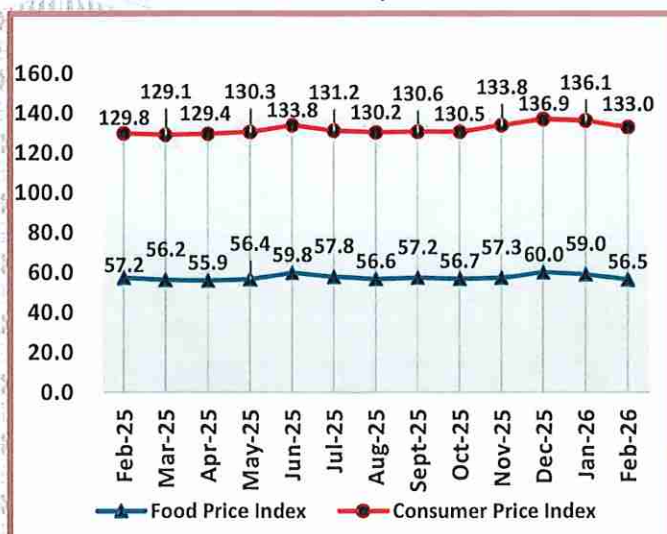


Figure 2: Annual Inflation Rate and Annual Food Inflation Rate, February 2025 – February 2026

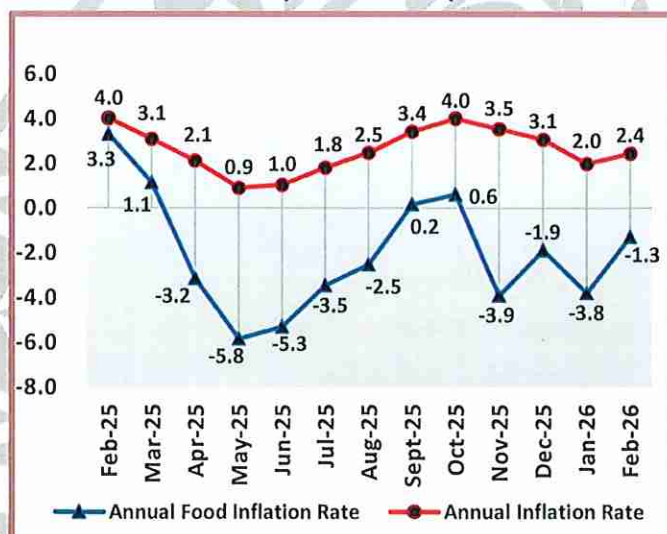


Table A: Summary highlights in percentage points, February 2025 – February 2026. (All groups, YoY)

PACCOICOP Sub-groups	PACCOICOP	Growth Contribution	Change in Indices	CPI 2021 Weights
FOOD		-0.6	-1.4	40.9
	Cereals and Cereal Products	-0.1	-1.1	6.5
	Live Animals, Meat, and Other Parts of Slaughtered Land Animals	+1.0	+8.9	11.4
	Fish and Other Seafood	+0.2	+3.9	4.6
	Milk, Other Dairy Products and Eggs	-0.3	-10.4	2.6
	Oils and Fats	+0.1	+5.6	1.2
	Fruits and Nuts	-0.1	-3.5	4.0
	Vegetables, Tubers, Plantains, Cooking Bananas and Pulses	-1.0	-13.1	7.9
	Sugar, Confectionery, and Desserts	0.0	-1.2	1.4
	Ready-made Food and Other Food Products	+0.2	+11.3	1.4
NON-ALCOHOLIC BEVERAGES		0.0	+1.0	1.7
Total				42.6

Disclaimer: Differences between the different group indexes and all item indexes are due to rounding.

For further information please visit our website
<https://tongastats.gov.to> or +676 23300

Malo 'Aupito



Stone F. Lolohea
 Government Statistician

